

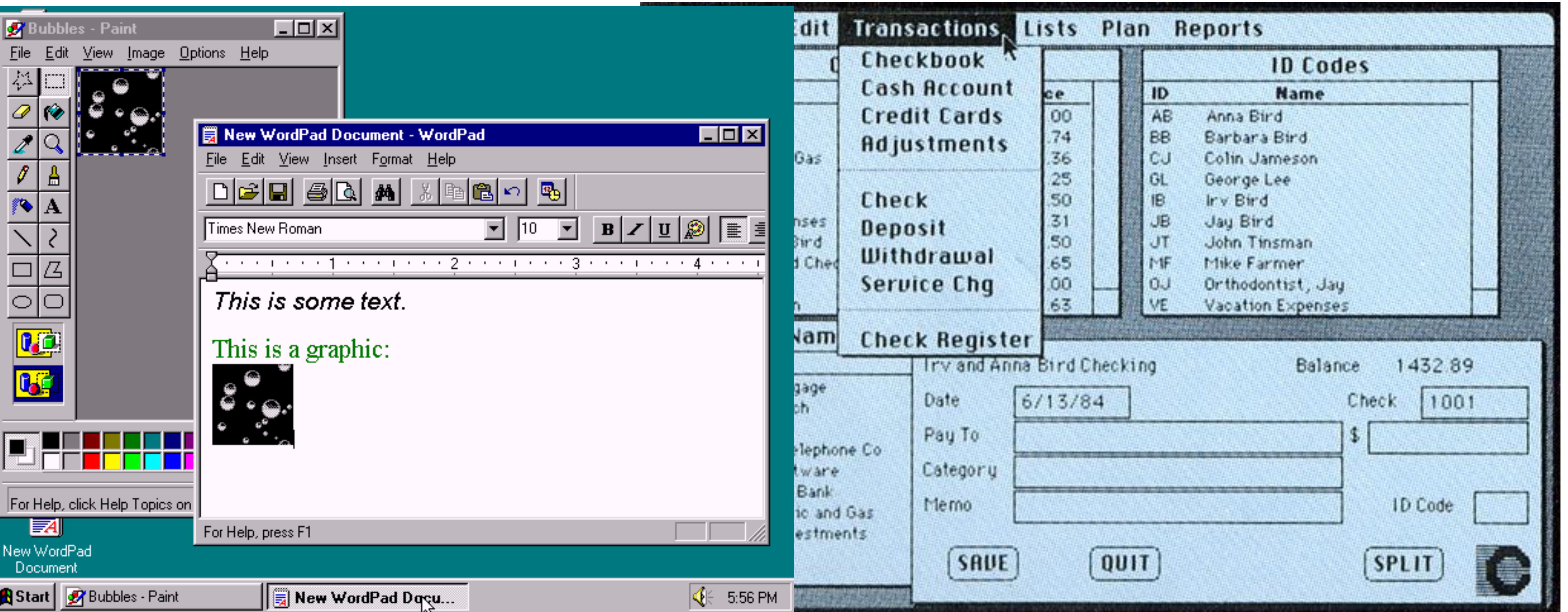
# **Form control colors**

**Tim Nguyen**

**A bit of design history**

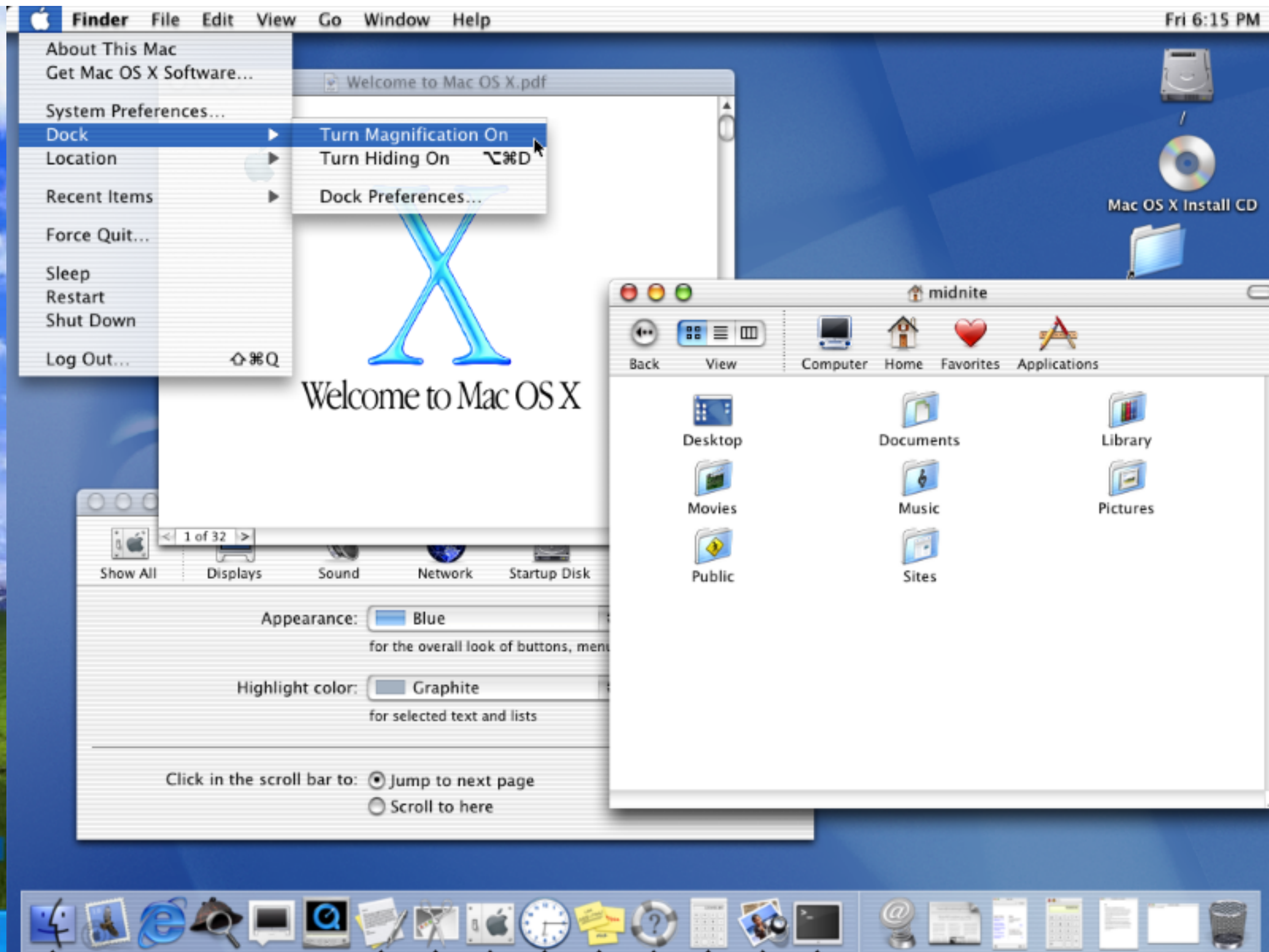
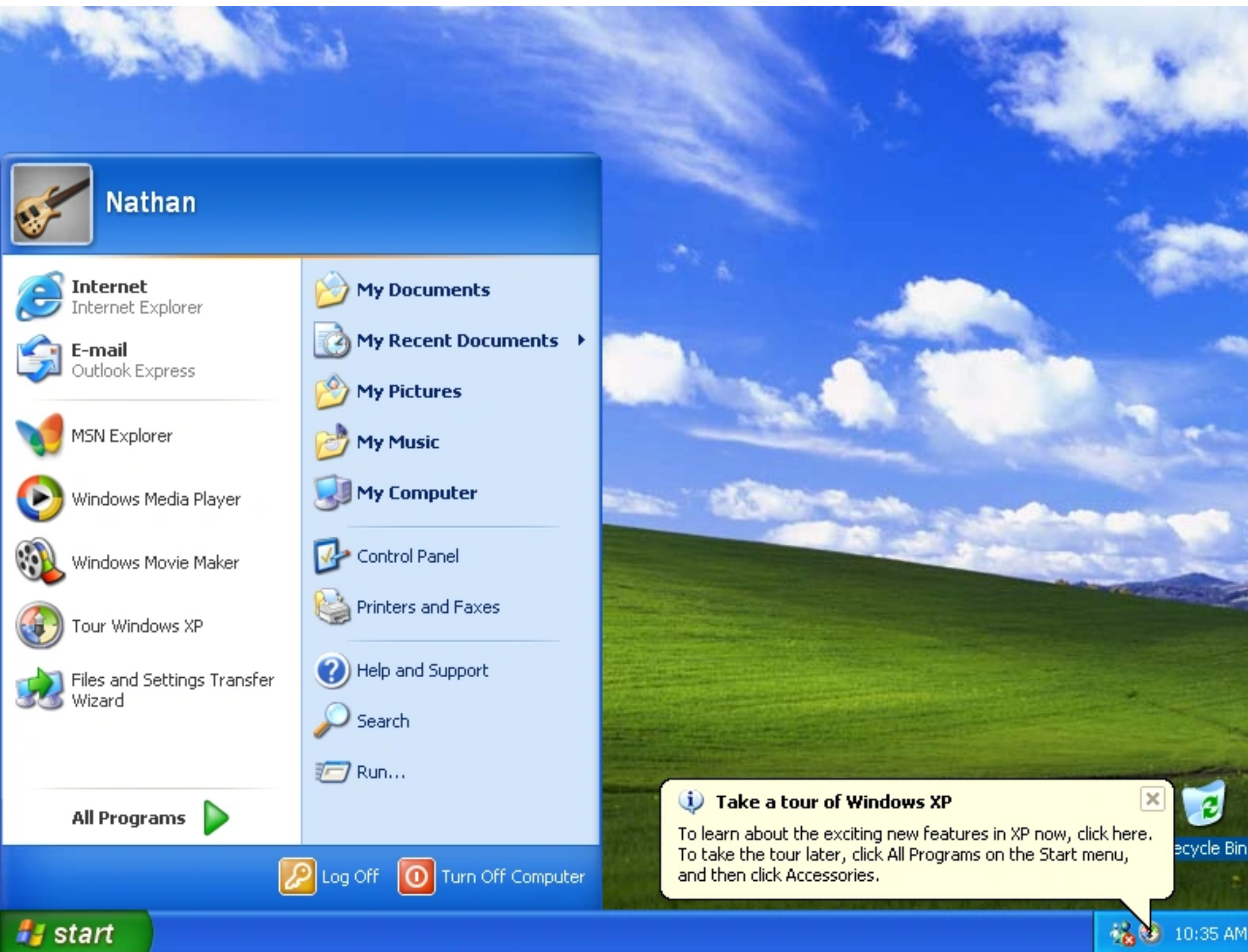


# 1995



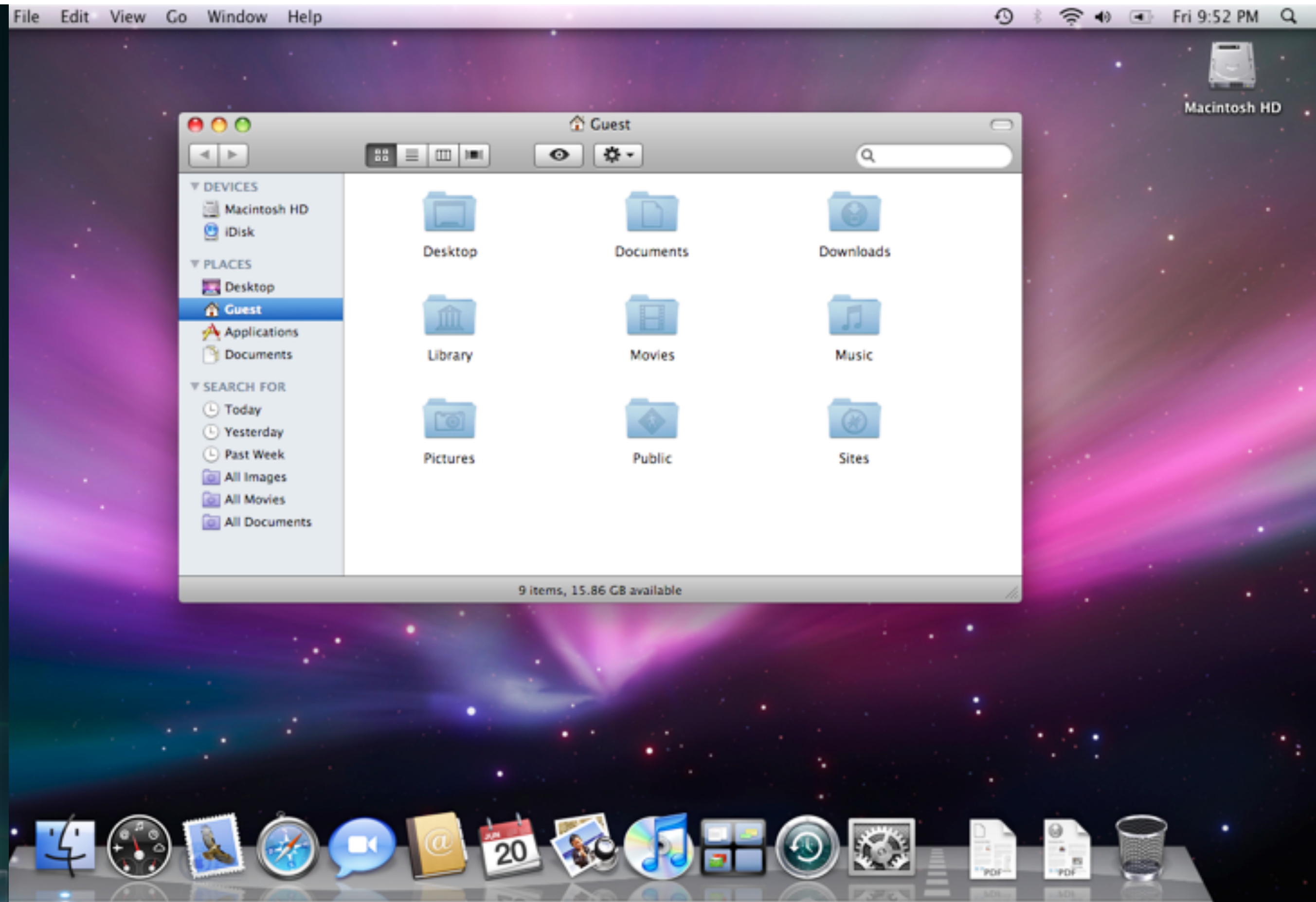
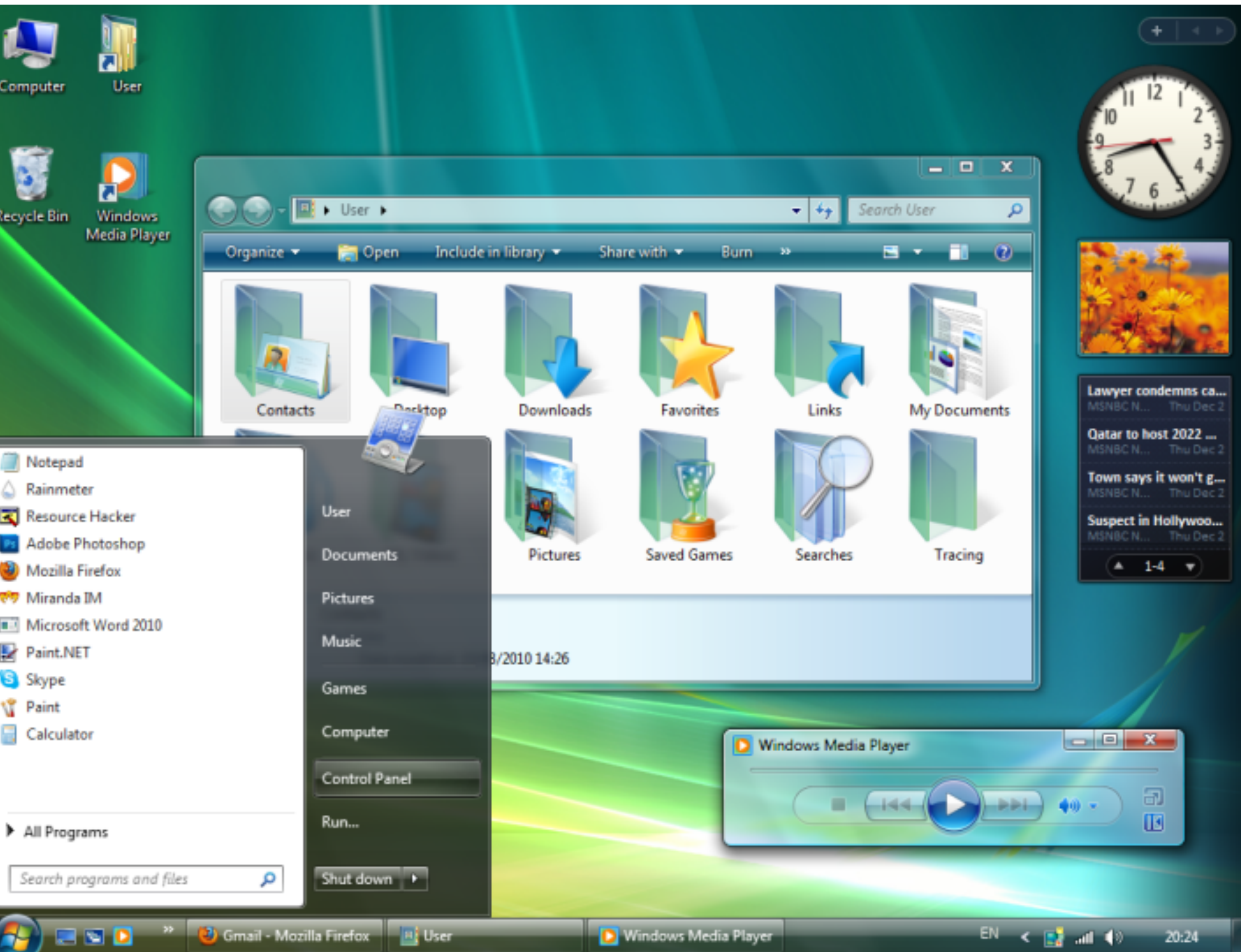


# 2001: wow colors



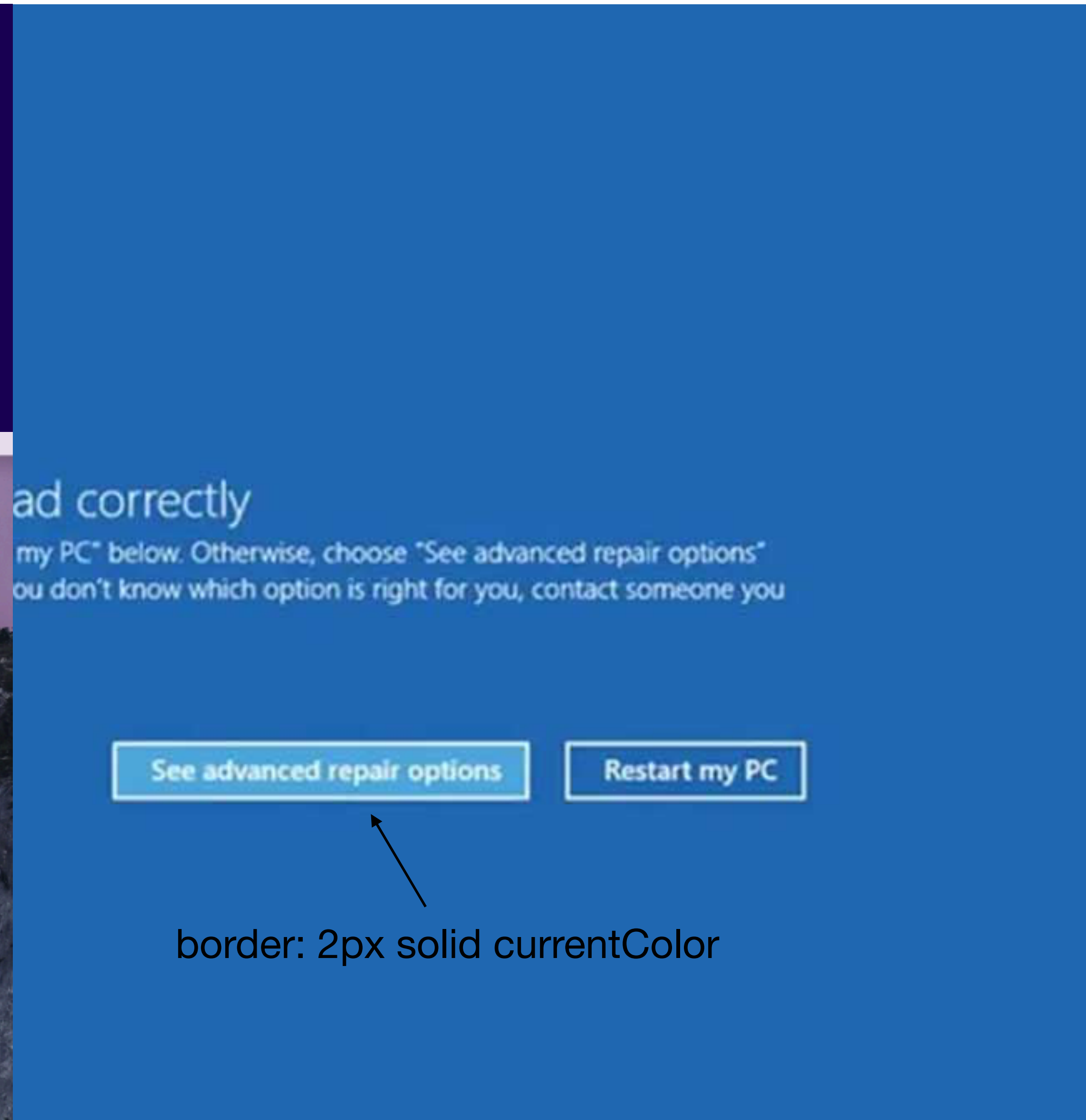
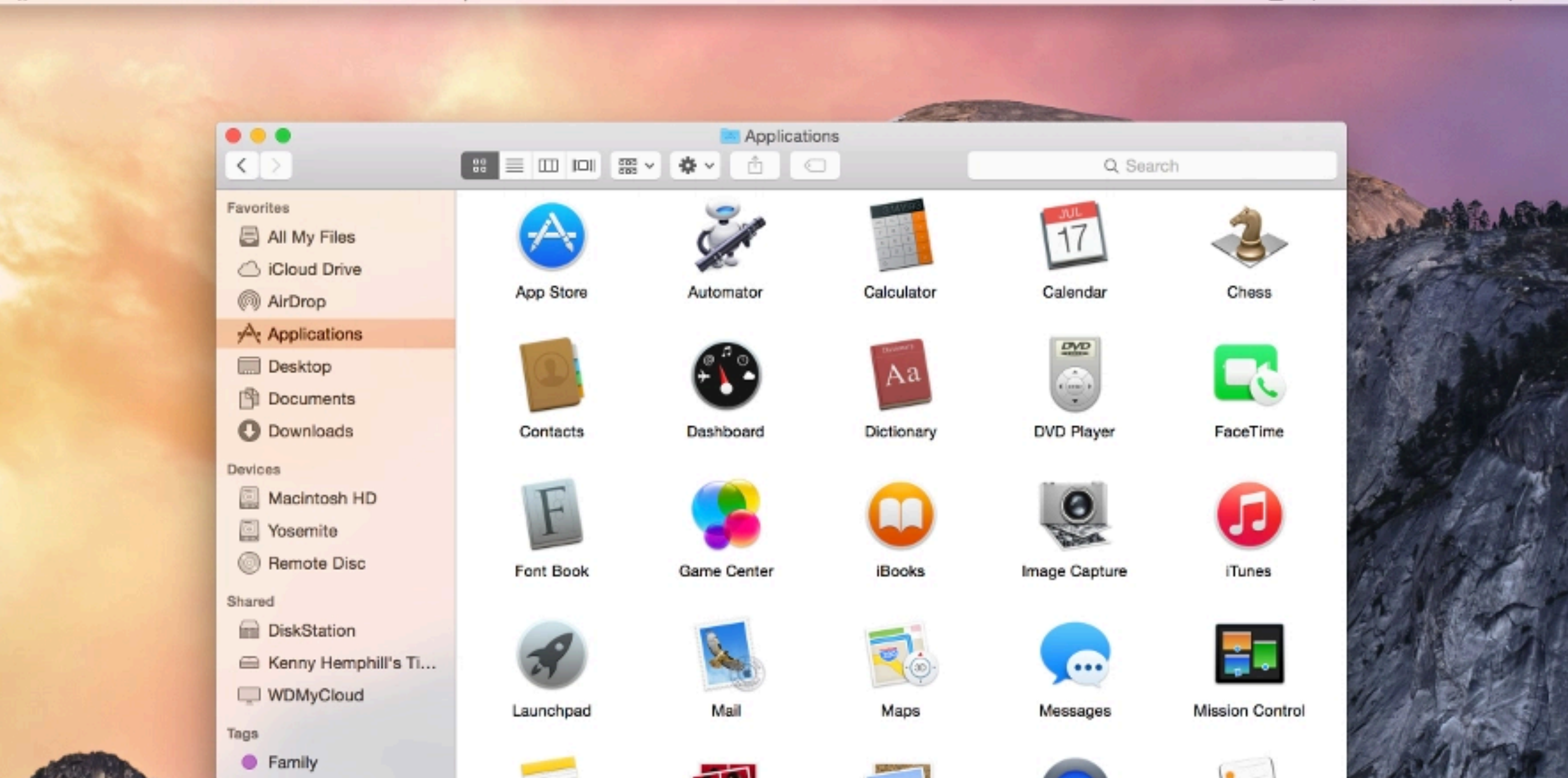
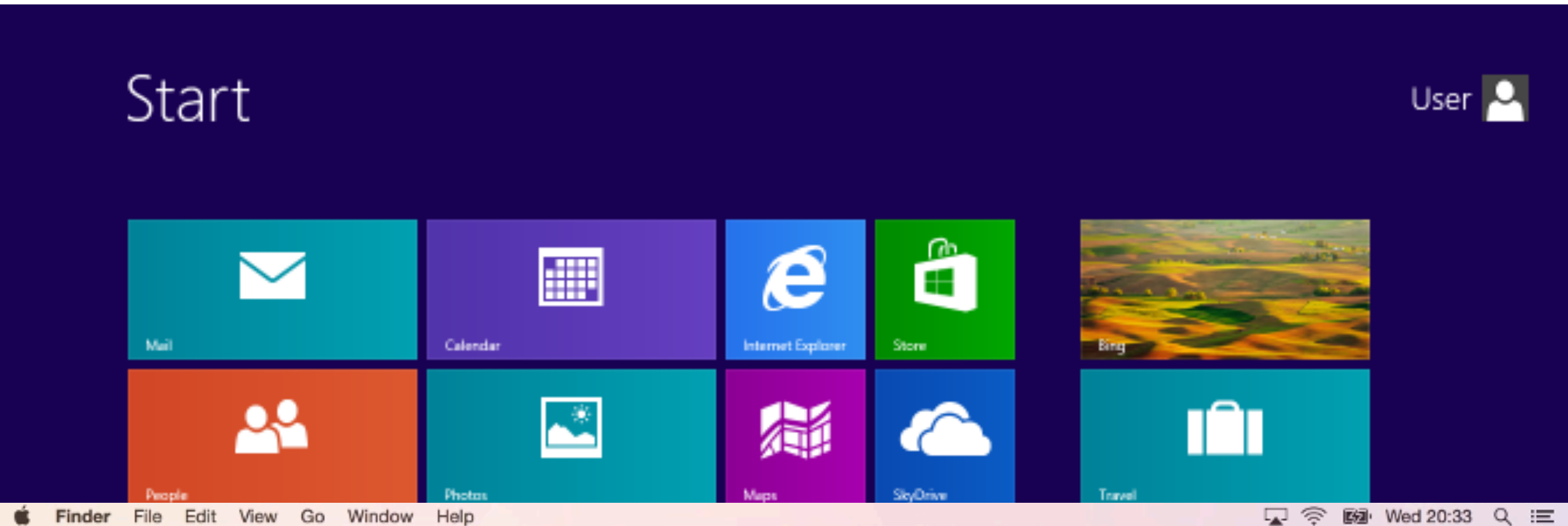


# 2006: lets do skeuomorphism

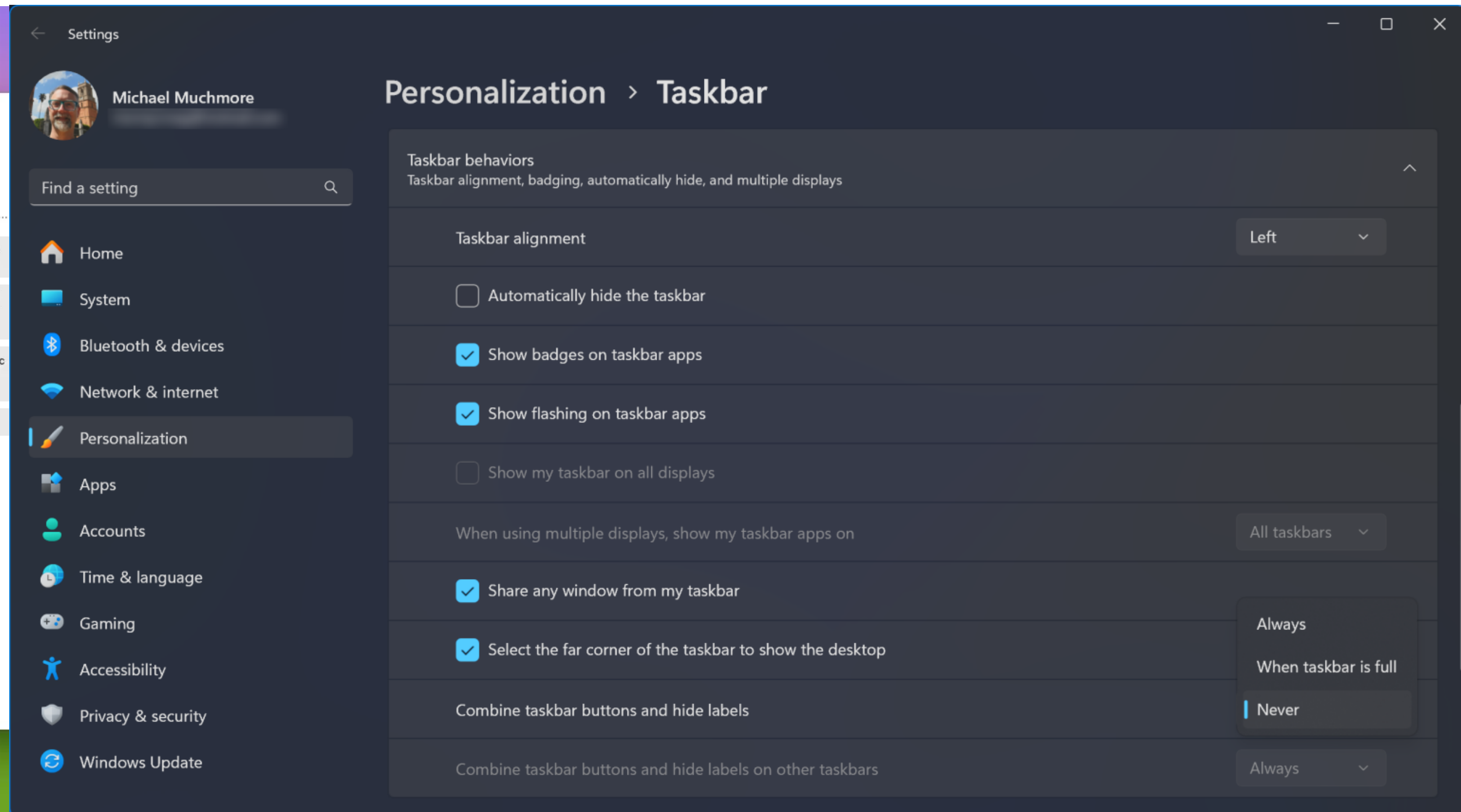
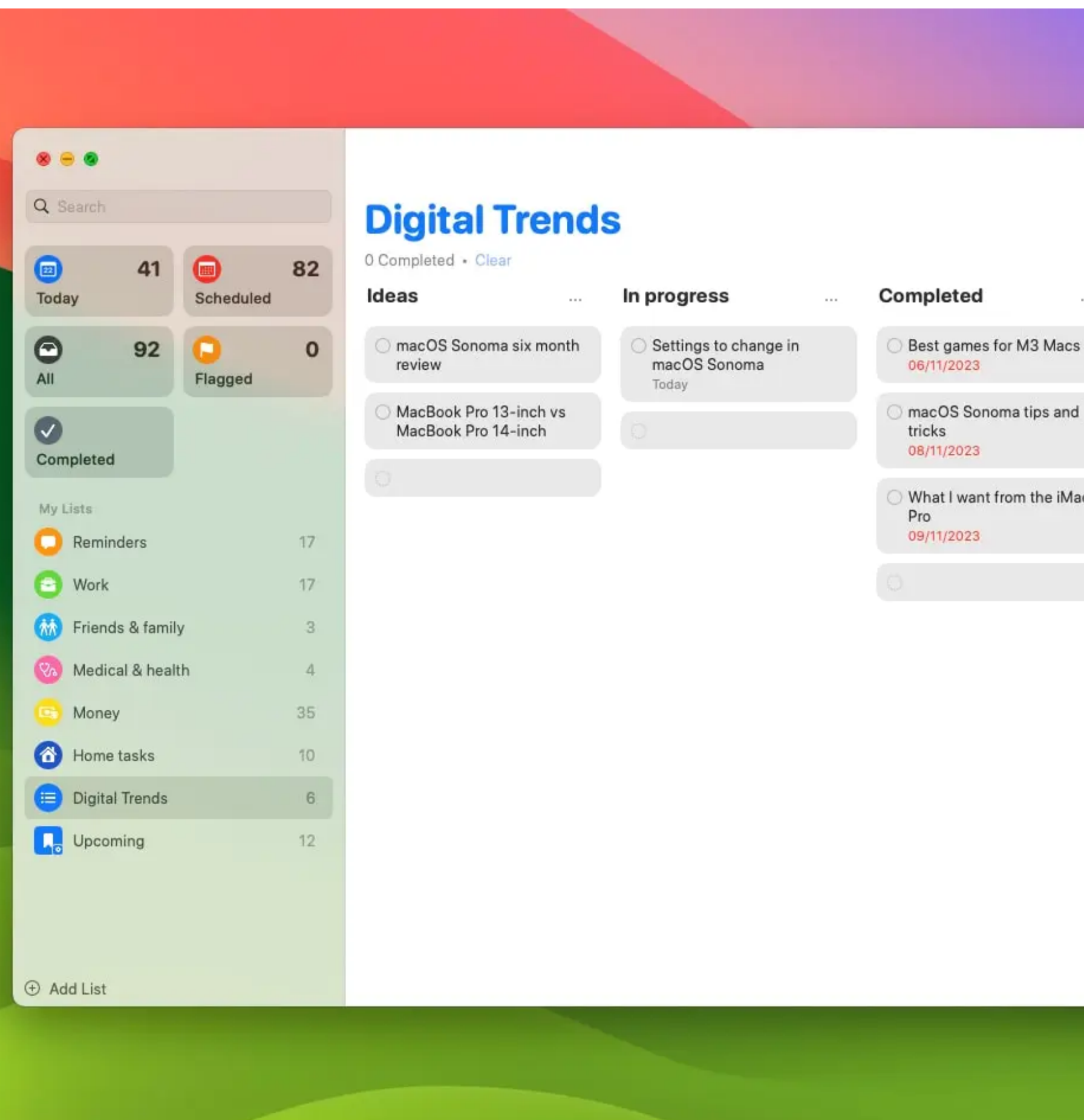




# 2012: lets make everything flat



# 2024: lets find the right amount of flat





**design is not timeless**



**appearance: base**



**goal: design pretty defaults (?)**



~~goal: design pretty defaults~~



**goal: provide sensible defaults**

# Two main options

## Colors go in foreground & background color pairs

- `currentColor` for all foreground colors & transparent background color
- system colors for both
- you can't mix and match otherwise you get contrast issues with different modes



**What's easier for the developer?**

**They're both as easy to override**



**They both work with color-scheme**

**Does anyone know the hex code  
of ThreeDShadow???**



**Standards best-practices**

# 2 categories of elements

- Overlay elements
  - `<dialog>`
  - `popover`
- In-page elements
  - in-flow `<div>` for instance

# background & text colors

- Overlay elements
  - system colors
- In-page elements
  - background: transparent;
  - color: inherit;



# border colors

## interactive quiz

```
<dialog id=dialog>Hello</dialog>
```

```
<script>
```

```
  dialog.show()
```

```
</script>
```

```
<style>
```

```
  dialog {
```

```
    color: red;
```

```
  }
```

```
</style>
```

A. black

B. red

C. CanvasText

D. ThreeDShadow



# Border color for tables #713

Open

atjn opened this issue on Sep 18 · 1 comment



atjn commented on Sep 18 · edited

Contributor



## Description

If I am writing a document with tables, I would like my table borders to be the same color as my text (by default):



This works in Firefox but in Chrome, Edge, and Safari it looks like this:



It would be really nice if engines could standardize this behavior.

## WPT tests to include

# Formal definition

## Initial value

currentcolor

## **Applies to**

all elements. It also applies to `::first-letter`.

## Inherited

no

## Computed value

computed color

## Animation type

a color

*Name:* **'border-top-color', 'border-right-color', 'border-bottom-color', 'border-left-color'**

*Value:* <color>

*Initial:* currentColor

*Applies to:* all elements except ruby base containers and ruby annotation containers

*Inherited:* no

*Percentages:* N/A

*Computed value:* computed color

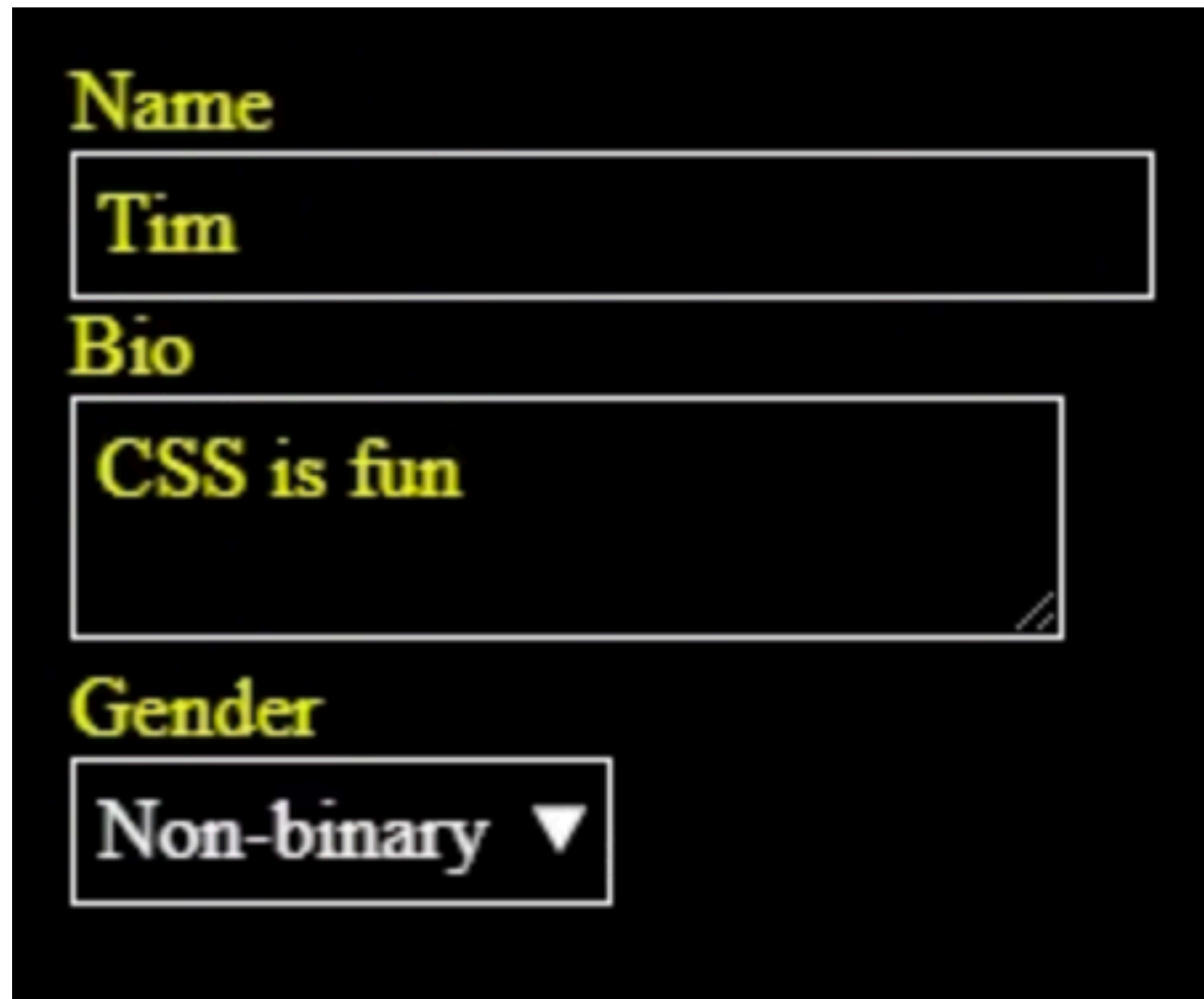


**lets converge border colors to  
currentColor!**

**Forced colors mode**

# currentColor + transparent background

Windows high contrast



A screenshot of a web form with a black background and high-contrast yellow and white text. The form contains three fields: a text input for 'Name' with the value 'Tim', a text area for 'Bio' with the text 'CSS is fun', and a dropdown menu for 'Gender' with the selected value 'Non-binary'.

Name

Tim

Bio

CSS is fun

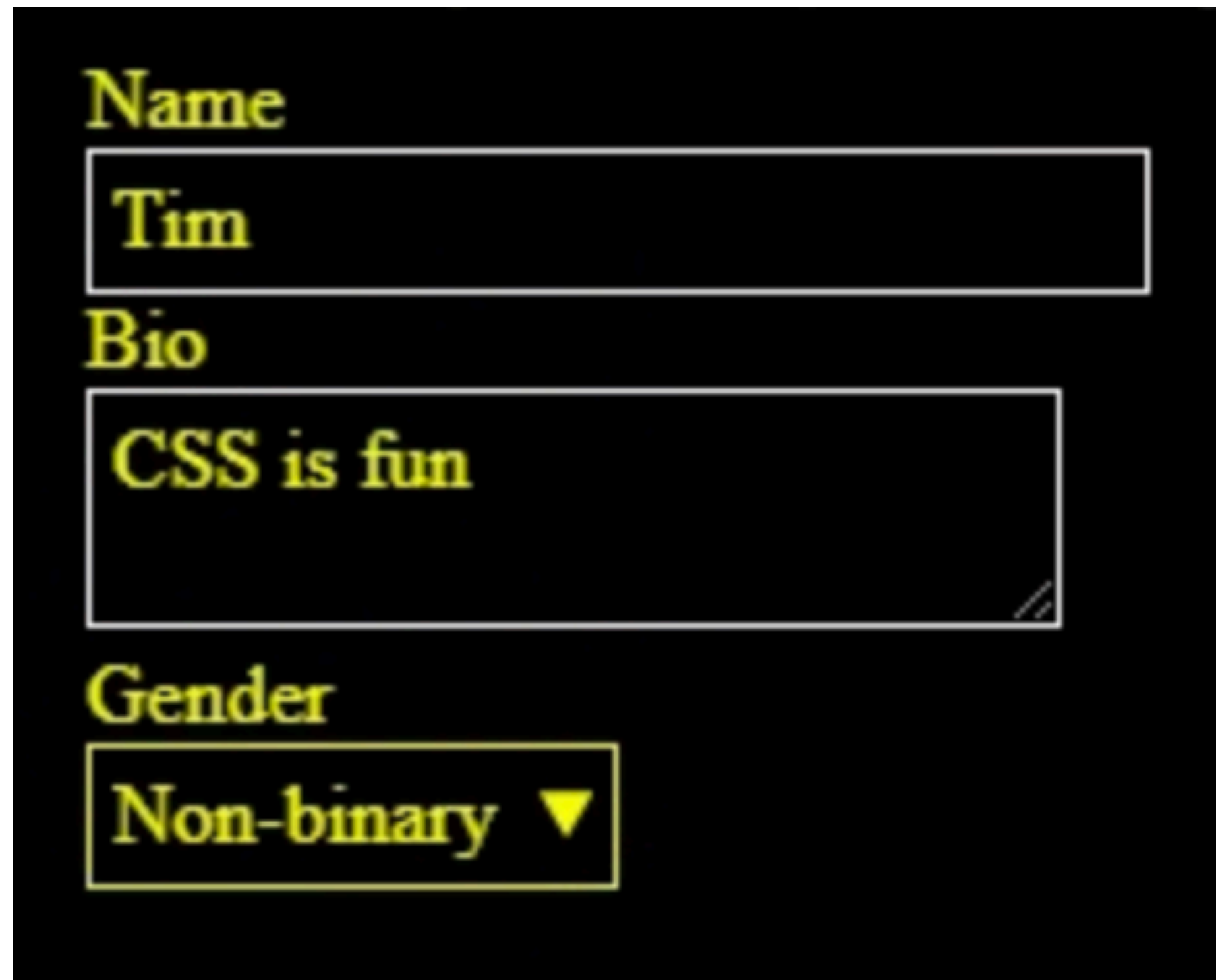
Gender

Non-binary ▼



# System colors

## Windows high contrast



A screenshot of a Windows high contrast interface. The background is black, and all text is yellow. The form contains three fields: a text input for 'Name' with the value 'Tim', a text area for 'Bio' with the value 'CSS is fun', and a dropdown menu for 'Gender' with the value 'Non-binary' and a downward arrow.

Name  
Tim

Bio  
CSS is fun

Gender  
Non-binary ▼

**Media query in the UA  
stylesheet?**

# Bikeshedding

# Open questions

- What exact levels of currentColor mixing for variations?
- transparency or luminance changes for currentColor variations?
- ???