



# Web features, Baseline status, and standardization signals



**W3C Breakouts Day 2024**







12 March 2024

François Daoust - Patrick Brosset - Kadir Topal



# Welcome to the breakout!



-  Presentation is a means to an end. Discussion is key!
-  Please mute when you're not speaking.
-  Please use “Raise hand” feature in Zoom to raise a question or comment.
-  Discussion will **not** be recorded.
-  Discussion notes taken on IRC, `irc.w3.org`, channel #web-features.
-  Breakout operated under [W3C's Code of Ethics and Professional Conduct](#).

Web developers   
& web features 

# Web developers



## Dos (\*)

- Talk about **features** such as “Fetch priority”.
- Read **dedicated documentation** about features, e.g., on MDN.
- Look for **useful compatibility data** on MDN, Can I Use, etc.

## Don'ts (\*)

- Don't care about how features get grouped into **specs**.
- Don't read **specs**, which is OK, because they're hard to read.
- Don't look at the **standardization status** of specs to use a feature.

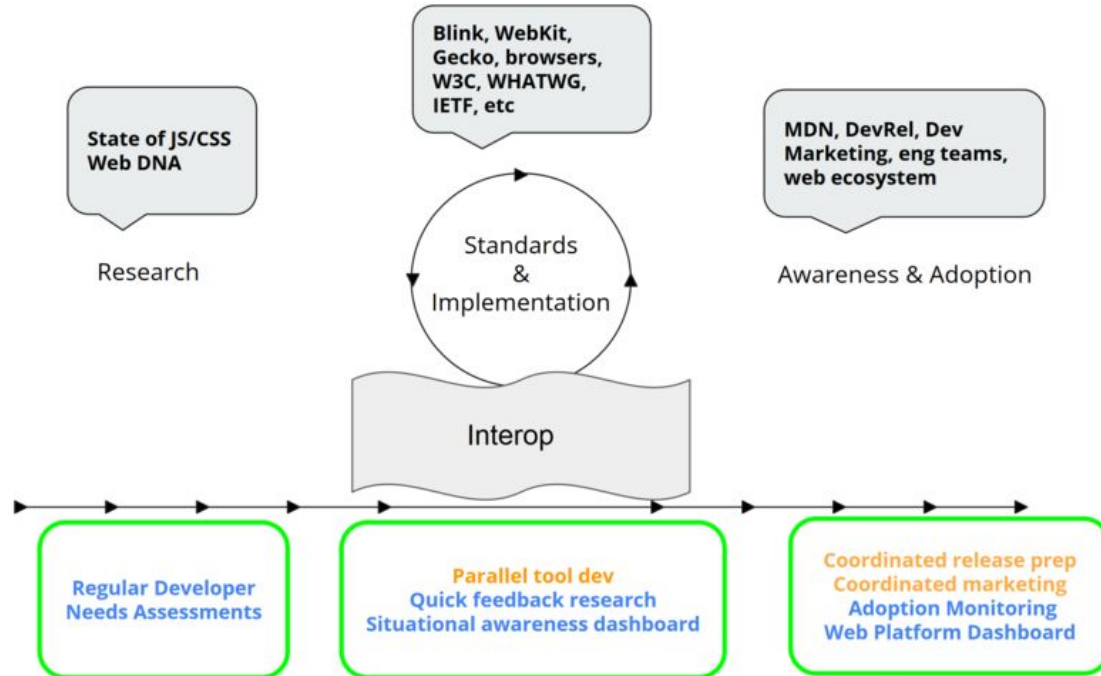
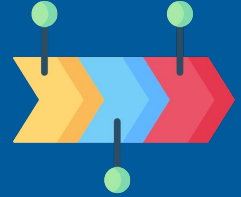
(\*) *Your mileage may vary...*

# Ideally, web features...

- **Identify** what web developers get and what they want from the web platform, in terms that speak to their needs and interests.
- **Track** some functionality **across sources** (surveys, docs, support data, specs, tests) and **over time**.
- **Capture interoperability information** that developers can rely on.

*Examples: Aborting ongoing activities, Grids, Popover, WebTransport, etc.*

# Web feature phases



# The web-features project



A **catalog** of web features developed by the WebDX Community Group to



- **Identify** capabilities of the web.
- **Track** features across phases.
- **Capture** *Baseline* availability across key browsers and releases through



Published as an NPM package.



See [web-platform-dx/web-features](https://github.com/web-platform-dx/web-features) repository.

# Baseline status




 Limited availability 

 **Baseline 2022** NEWLY AVAILABLE 

 **Baseline Widely available** 

This feature is well established and works across many devices and browser versions. It's been available across browsers since February 2017.

[Learn more](#) [See full compatibility](#) 

- Identify well supported features.
- Computed from support data in the MDN browser-compat-data (**BCD**) project.
- Two Baseline statuses:
  - **Baseline low**: available across latest versions of browsers in the core browser set (\*)
  - **Baseline high**: widely available. Across browsers in the core browser set (\*) for at least 30 months.

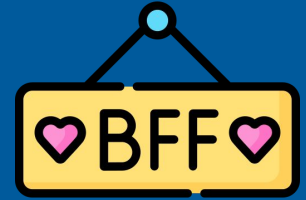
From "Baseline's evolution on MDN" - 5 december 2023  
<https://developer.mozilla.org/en-US/blog/baseline-evolution-on-mdn/>

(\*) Apple Safari (macOS, iOS), Google Chrome (desktop, Android), Microsoft Edge (desktop), Mozilla Firefox (Android, desktop)





# Other integrations



The WebDX CG is currently working with other projects to propagate identifiers provided by the web-features project, and improve tracking of features across sources:

- [Web Platform Tests](#)
- [State of \\* surveys](#)
- ...
- *What about integration in the standardization process?*

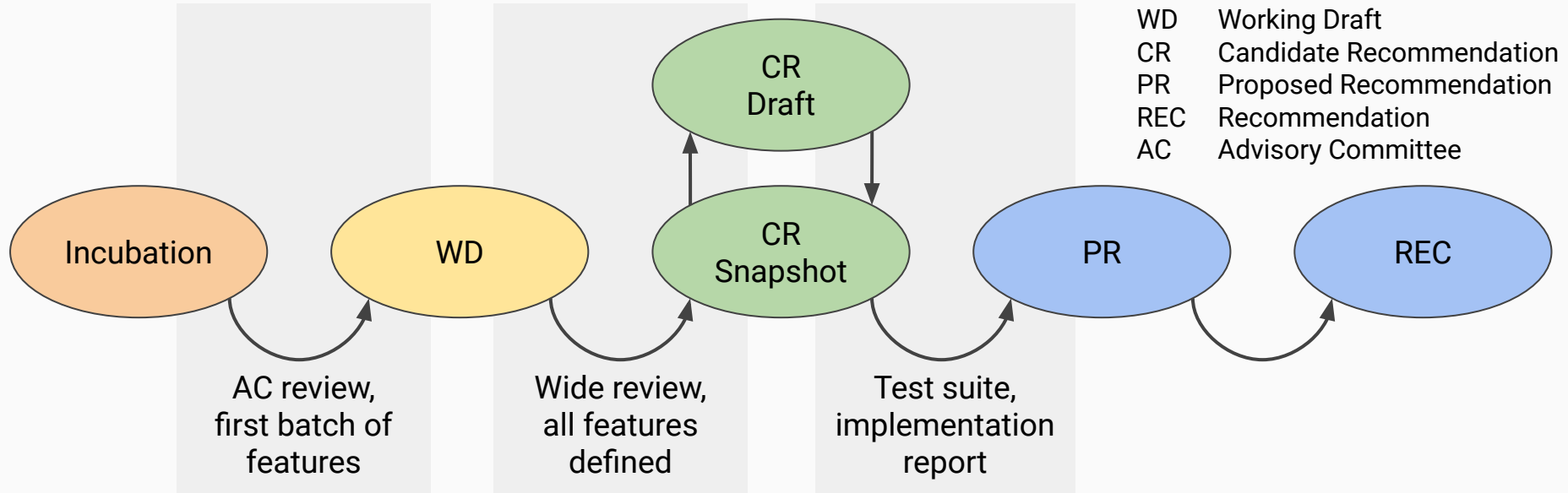
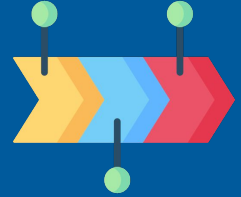
# Web features & Standardization

# The W3C Process ❤️ features

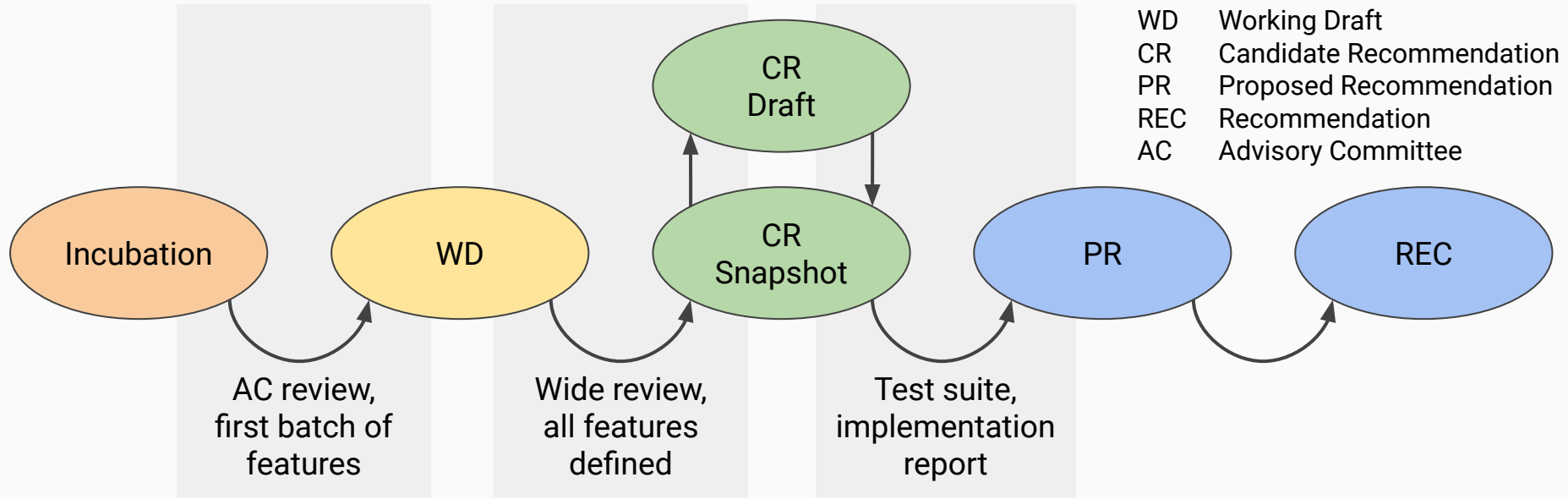
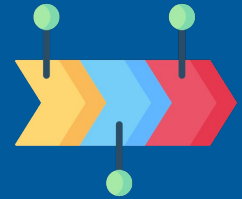



- It defines “**New features**” as “Changes that add new functionality, such as new elements, new APIs, new rules, etc.” (a.k.a. *class 4 changes*)  
<https://www.w3.org/2023/Process-20231103/#class-4>
- It uses features to assess “**adequate implementation experience**”  
<https://www.w3.org/2023/Process-20231103/#implementation-experience>
- It sets requirements for “**new features**” at certain maturity levels, e.g.,  
<https://www.w3.org/2023/Process-20231103/#allow-new-features>
- It allows “**features at risk**” in Candidate Recommendations  
<https://www.w3.org/2023/Process-20231103/#at-risk>

# The Recommendation track




# The Recommendation track & the Baseline status of spec features



 Not Baseline

 Baseline low

 Baseline high

# Standardization signals?



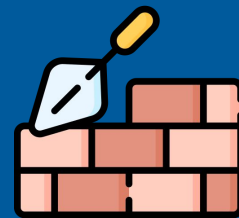
Baseline may be used to **detect divergences** between the developer perspective and the standardization status of the underlying specs:

- **Late incubations:**  
Specs that define Baseline features but that are not on the Recommendation track.
- **Late Working Drafts:**  
Specs that define Baseline features but that are still Working Drafts.
- **Not-so-well supported Recommendations:**  
Recommendations that still define non-Baseline features.
- **Process assessment:**  
Interval between publication as Recommendation and features reaching Baseline status (note that interval may go both ways!).  
Evolution of the number of specs in the previous lists.

First stab at exploring  
standardization signals



# Exploring standardization signals



- See code in [tidoust/web-features-standardization](#) repository and first report in [issue #1](#).
- Combines Baseline info in [web-features](#) and spec status info in [browser-specs](#), using [BCD](#) to map features to specs.
- Reports specs that may be worth looking into:
  - Late incubations
  - Late Working Drafts
  - Not-so-well supported Recommendations
- No analysis of interval between Rec and Baseline for now! (info not directly available in browser-specs)

# Highlights from the first report



## Late incubations?

- Compression Streams
- CSS Environment Variables Module Level 1
- File and Directory Entries API
- Media Playback Quality
- `requestVideoFrameCallback()`
- The “threads” fork of WebAssembly JS Interface

## Late Working Drafts?

- CSS Box Alignment Module Level 3
- CSSOM View Module (`scrollIntoView()` and `layerName`)
- Motion Path Module Level 1
- Selectors Level 4
- Server Timing
- Web Animations
- WebTransport (first batch of features)

## Not-so-well supported Recommendations?

- Web Share API
- Web Cryptography API (some bits under `SubtleCrypto`)

# Some known caveats



- **Features coverage** in web-features is far from complete. To extend coverage, code runs a second analysis considering each spec is a feature and computing Baseline info from BCD.
- **Signals are just signals.** They need to be analyzed. For instance, specs identified as potentially late may well define other less advanced features.
- **BCD keys often map to an unversioned spec URL.** The code uses the “current spec” in the series when that happens. That may not be correct.
- **Some Recommendations are missing** from browser-specs as the project focuses on the latest version in a series.

# Some known reasons for delays



## Out of incubation:

- Chartering a Working Group is hard.
- Hard to secure resources to move forward (chairs, editors, testers, etc.)
- Publication as First Public Working Draft triggers call for exclusions. Groups may delay publication until the spec contains enough features.

## Out of Working Draft:

- Wide review is hard, especially when the spec keeps on moving.
- Groups use a more real-time feedback loop to inform and revise the spec based on implementation experience, and tend to delay publication of specs as Candidate Recommendation until the work is essentially done (scope, tests, implementations).

# Discussion

# Quick Q&A



- **What about computing interoperability from Web Platform Tests?**
  - Too fine-grained, always a test that fails somewhere.
  - Harder to map to features.
- **Is web-features really needed here?**
  - It conveys a developers perspective, which completes the standardization perspective with more practical “can use / can’t use” considerations.
  - It provides a mapping to BCD keys, allowing to exclude keys that are potentially less interoperable but also less interesting for main usage scenarios (e.g., event constructors).
  - It allows to distinguish features within a spec. A spec-based approach only sees the Web Speech API as a whole. Features see “Speech synthesis” and “Speech recognition” with very different compatibility statuses.

# Possible discussion topics



- What additional data or tooling would make web-features a powerful tool for standardization?
- How would you like to see web-features data presented in standards work?
- On the meaning of “interoperability”
  - Different levels at which it can be evaluated
  - Example of accessibility support in assistive technology.

# Thank you!

## Attributions



Icons from [www.flaticon.com](http://www.flaticon.com):

- [Brickwall](#), [Question mark](#), [Must have](#), [Medal](#), [Website](#), [BFF](#), [Hard work](#), [Star](#), [Timeline](#), [Under construction](#) icons created by Freepik
- [Promise icons](#), [Brainstorming icons](#) created by Eucalyp
- [Wish list icons](#) created by monkik

