

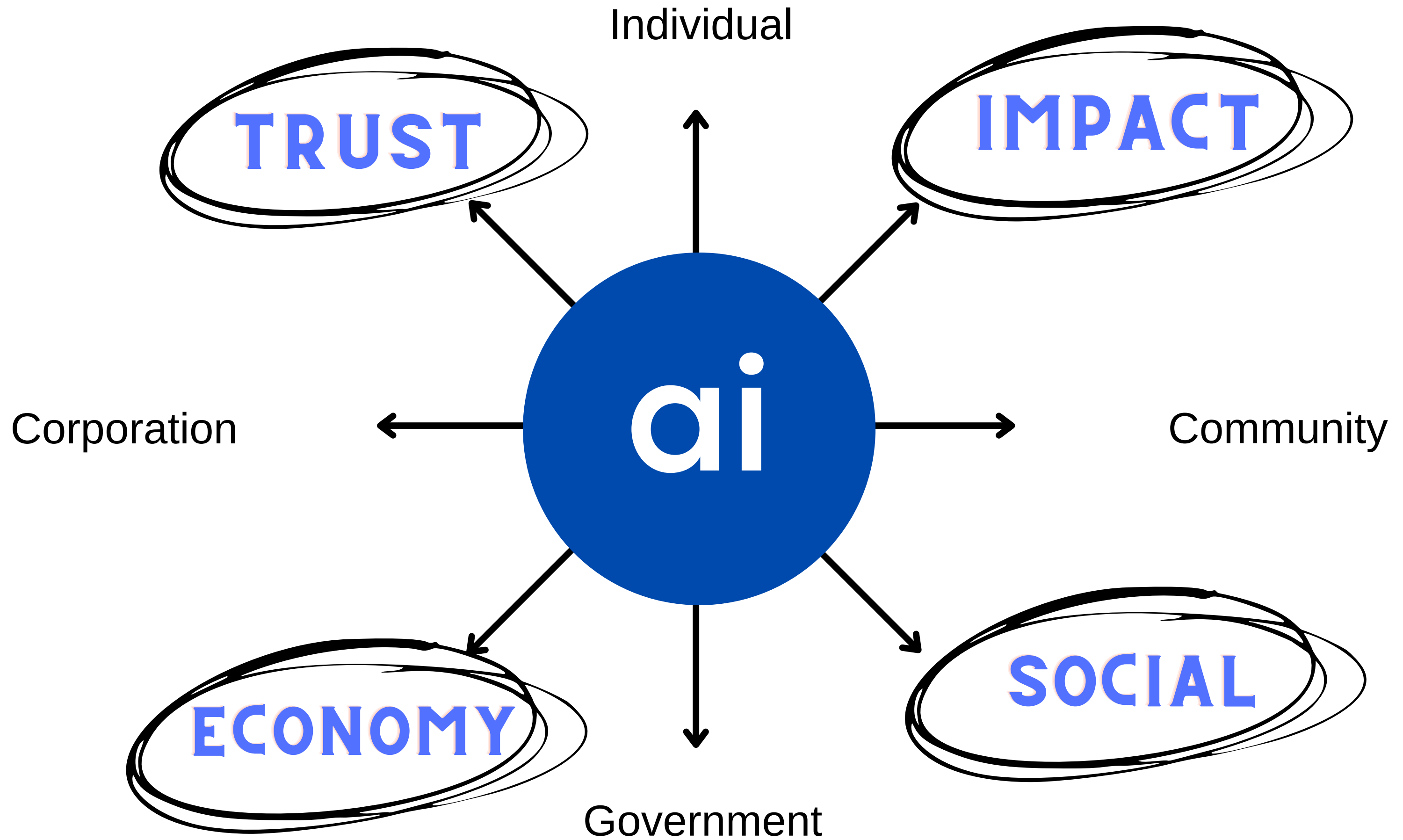
Soft Part of ai

RACHEL YAGER

- NOT AN EXPERT
- TRY TO BE GOOD



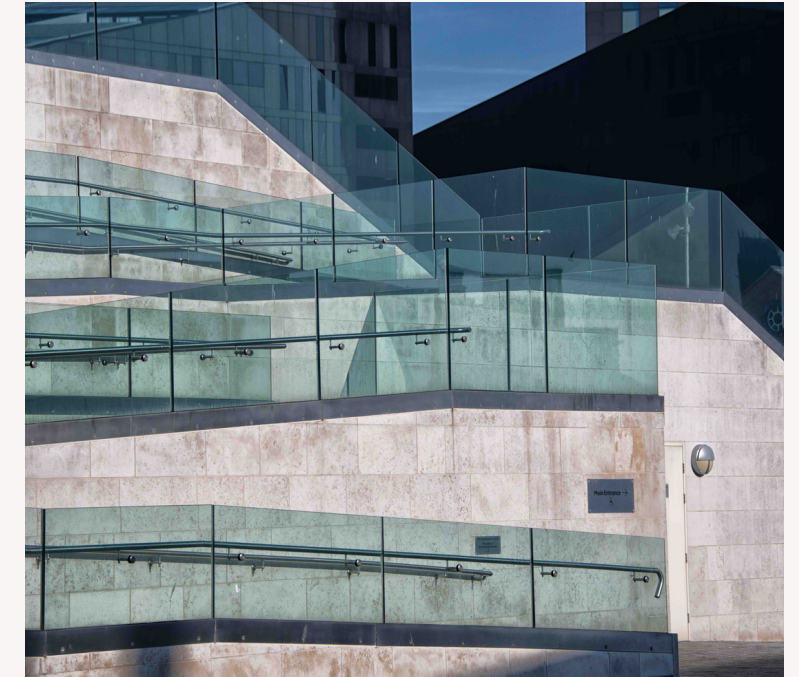
Ethics and Values of ai →



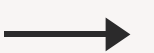
TECH --> DESIGN + ENGINEER ING

Technology as a Driving Force and
Basis for Ethical Considerations?

- **Data**
- **Environment**
- **DEI**
- **Essential Biz**
- **Infrastructure**
- **?**



Envisioning ai Future for Work and Life





Policy / Opinion Research

Proposal to the WG

- Business Perspectives

- Regional/Country-Specific Regulations

- Other W3C Working Groups

Envisioning ai Future 'more





Envisioning ai Future.

Is there a learning mechanism to measure/monitor ai ethics and values?

Is it ethical to measure/monitor?

many more questions ...