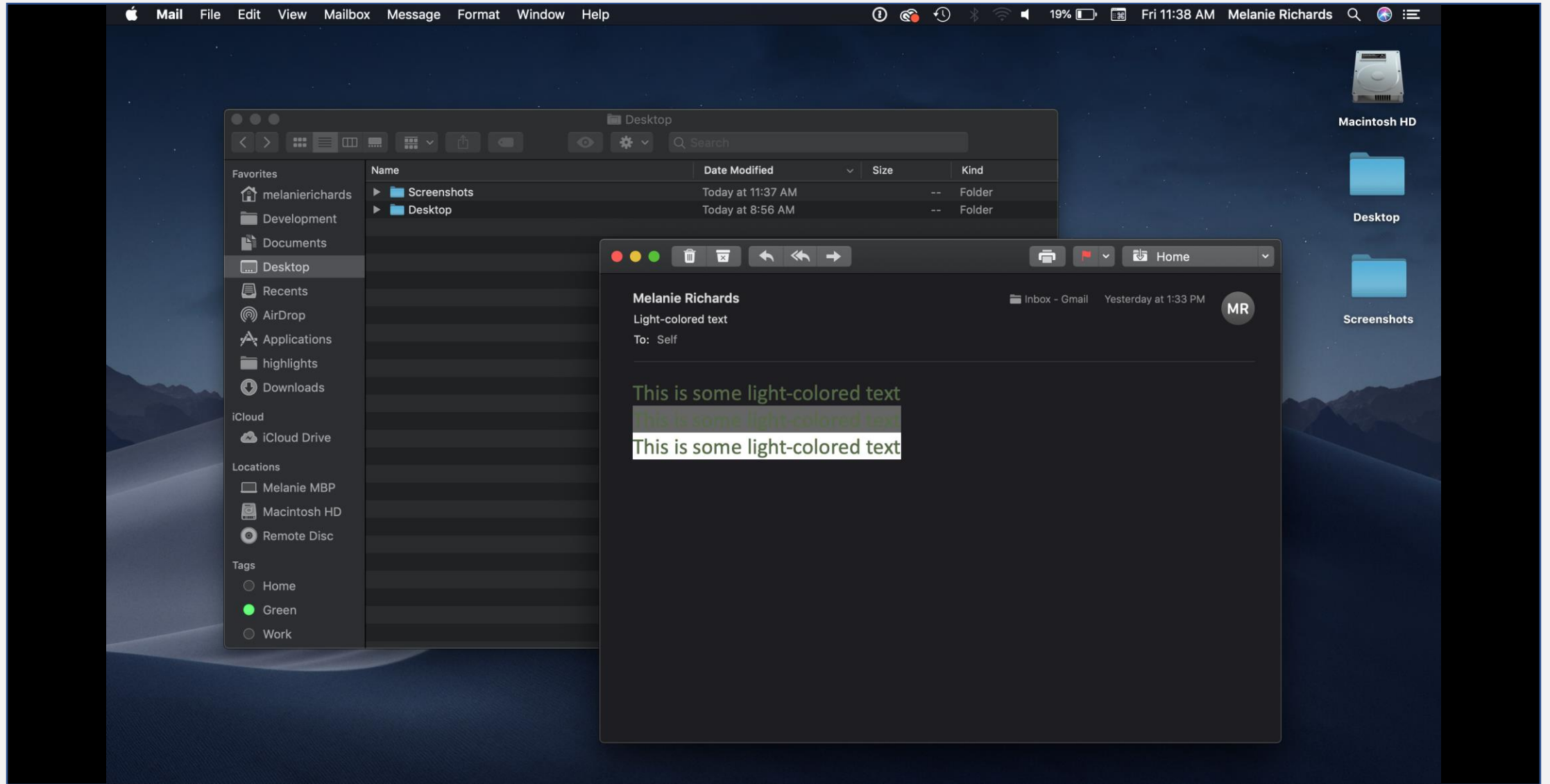


High Contrast

Current landscape of OS color
modes and contrast features

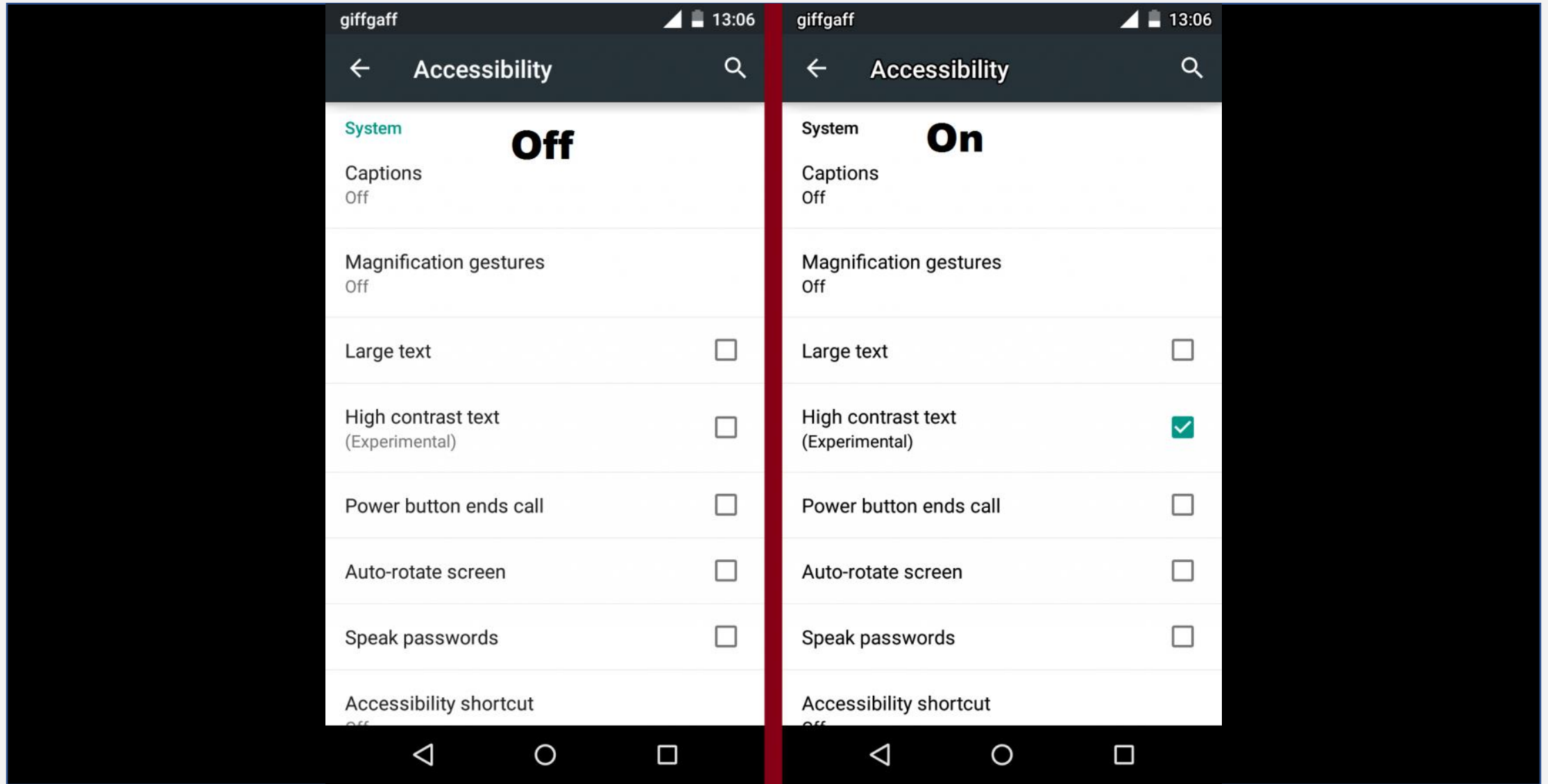
Dark mode



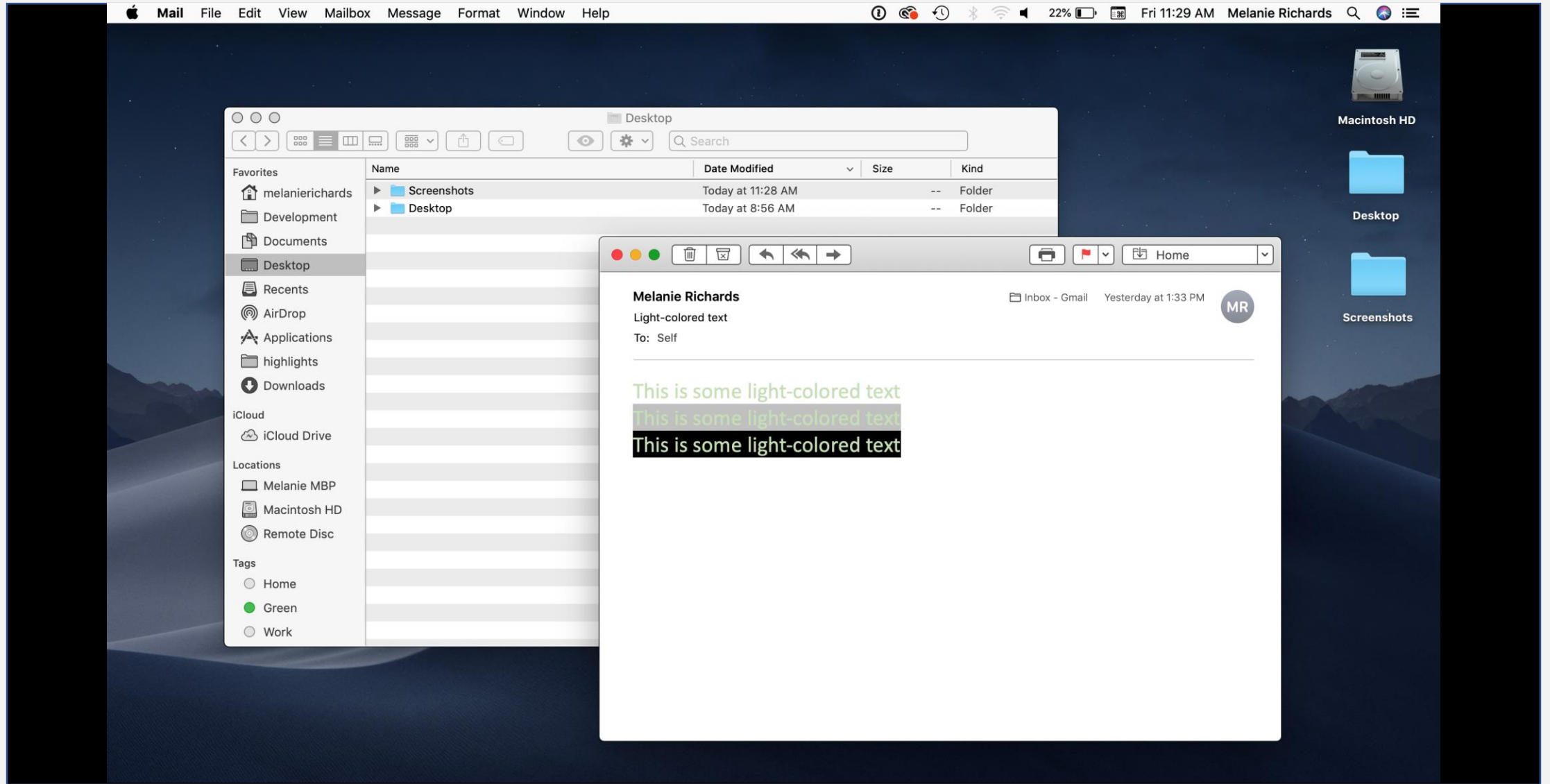
Inverted colors



High contrast text (experimental)



Increase contrast



High contrast (web extension)

Wikipedia store

Interaction

Help

About Wikipedia

Community portal

Recent changes

Contact page

What links here

Related changes

Upload file

Special pages

Permanent link

Page information

Wikidata item

Cite this page

Print/export

Create a book

Download as PDF

Printable version

In other projects

Wikimedia Commons

Wikispecies

Wikiquote

Languages

Deutsch

Español

Français

Italiano

Português

Tagalog

Tiếng Việt

中文

224 more

Edit links

High Contrast is Enabled

Disable (Shift+F11)

Color scheme for en.wikipedia.org (Shift+F12):

Normal

Increased Contrast

Grayscale

Inverted Color

Inverted Grayscale

Yellow on Black

Set as default scheme

Forget site customizations

Genus: *Canis*

Species: *C. lupus*

Subspecies: *C. l. familiaris*^[1]

Trinomial name

Canis lupus familiaris^[1]

Linnaeus, 1758

Synonyms

Canis familiaris Linnaeus, 1758^{[2][3]}

Wikipedia store

Interaction

Help

About Wikipedia

Community portal

Recent changes

Contact page

What links here

Related changes

Upload file

Special pages

Permanent link

Page information

Wikidata item

Cite this page

Print/export

Create a book

Download as PDF

Printable version

In other projects

Wikimedia Commons

Wikispecies

Wikiquote

Languages

Deutsch

Español

Français

한국어

Italiano

Русский

Tagalog

Tiếng Việt

中文

224 more

Edit links

High Contrast is Enabled

Disable (Shift+F11)

Color scheme for en.wikipedia.org (Shift+F12):

Normal

Increased Contrast

Grayscale

Inverted Color

Inverted Grayscale

Yellow on Black

Set as default scheme

Forget site customizations

Genus: *Canis*

Species: *C. lupus*

Subspecies: *C. l. familiaris*^[1]

Trinomial name

Canis lupus familiaris^[1]

Linnaeus, 1758

Synonyms

Canis familiaris Linnaeus, 1758^{[2][3]}

Dog - Wikipedia

https://en.wikipedia.org/wiki/Dog

implies that the direct ancestor of the dog is extinct.[14] The dog was the first species to be domesticated[13][15] and has been selectively bred over millennia for various behaviors, sensory capabilities, and physical attributes.[16] Their long association with humans has led dogs to be uniquely attuned to human behavior[17] and they are able to thrive on a starch-rich diet that would be inadequate for other canid species.[18] Dogs vary widely in shape, size and colors.[19] Dogs perform many roles for humans, such as hunting, herding, pulling loads, protection, assisting police and military, companionship and, more recently, aiding disabled people and therapeutic roles. This influence on human society has given them the sobriquet of "man's best friend".

Contents [hide]

- Terminology
- Taxonomy
- Origin
- Biology
 - Anatomy
 - Size and weight
 - Senses
 - Coat
 - Tail
 - Differences from wolves
 - Health
 - Lifespan
 - Reproduction
 - Neutering
 - Inbreeding depression
- Intelligence, behavior, and communication
 - Intelligence
 - Behavior
 - Communication
- Ecology
 - Population
 - Competitors and Predators
 - Diet
 - Range
- Breeds
- Roles with humans
 - Early roles
 - As pets
 - Work
 - Sports and shows
 - As food
 - Health risks to humans
 - Health benefits for humans
 - Shelters

Dogs show great morphological variation

Wikipedia store

Interaction

Help

About Wikipedia

Community portal

Recent changes

Contact page

What links here

Related changes

Upload file

Special pages

Permanent link

Page information

Wikidata item

Cite this page

Print/export

Create a book

Download as PDF

Printable version

In other projects

Wikimedia Commons

Wikispecies

Wikiquote

Languages

Deutsch

Español

Français

한국어

Italiano

Русский

Tagalog

Tiếng Việt

中文

224 more

Edit links

High Contrast is Enabled

Disable (Shift+F11)

Color scheme for en.wikipedia.org (Shift+F12):

Normal

Increased Contrast

Grayscale

Inverted Color

Inverted Grayscale

Yellow on Black

Set as default scheme

Forget site customizations

Genus: *Canis*

Species: *C. lupus*

Subspecies: *C. l. familiaris*^[1]

Trinomial name

Canis lupus familiaris^[1]

Linnaeus, 1758

Synonyms

Canis familiaris Linnaeus, 1758^{[2][3]}

Dog - Wikipedia

https://en.wikipedia.org/wiki/Dog

implies that the direct ancestor of the dog is extinct.[14] The dog was the first species to be domesticated[13][15] and has been selectively bred over millennia for various behaviors, sensory capabilities, and physical attributes.[16] Their long association with humans has led dogs to be uniquely attuned to human behavior[17] and they are able to thrive on a starch-rich diet that would be inadequate for other canid species.[18] Dogs vary widely in shape, size and colors.[19] Dogs perform many roles for humans, such as hunting, herding, pulling loads, protection, assisting police and military, companionship and, more recently, aiding disabled people and therapeutic roles. This influence on human society has given them the sobriquet of "man's best friend".

Contents [hide]

- Terminology
- Taxonomy
- Origin
- Biology
 - Anatomy
 - Size and weight
 - Senses
 - Coat
 - Tail
 - Differences from wolves
 - Health
 - Lifespan
 - Reproduction
 - Neutering
 - Inbreeding depression
- Intelligence, behavior, and communication
 - Intelligence
 - Behavior
 - Communication
- Ecology
 - Population
 - Competitors and Predators
 - Diet
 - Range
- Breeds
- Roles with humans
 - Early roles
 - As pets
 - Work
 - Sports and shows
 - As food
 - Health risks to humans
 - Health benefits for humans
 - Shelters

Dogs show great morphological variation

Windows High Contrast

This article is about the domestic dog. For related species known as "dogs", see *Canidae*. For other uses, see *Dog (disambiguation)*.

The **domestic dog** (*Canis lupus familiaris* when considered a subspecies of the wolf or *Canis familiaris* when considered a distinct species)^[4] is a member of the genus *Canis* (canines), which forms part of the wolf-like canids,^[5] and is the most widely abundant terrestrial carnivore.^{[6][7][8][9][10]} The dog and the extant gray wolf are sister taxa^{[11][12][13]} as modern wolves are not closely related to the wolves that were first domesticated^{[12][13]} which implies that the direct ancestor of the dog is extinct.^[14] The dog was the first species to be domesticated^{[13][15]} and has been selectively bred over millennia for various behaviors, sensory capabilities, and physical attributes.^[16]

Their long association with humans has led dogs to be uniquely attuned to human behavior^[17] and they are able to thrive on a starch-rich diet that would be inadequate for other canid species.^[18] Dogs vary widely in shape, size and colors.^[19] Dogs perform many roles for humans, such as hunting, herding, pulling loads, protection, assisting police and military, companionship and, more recently, aiding disabled people and therapeutic roles. This influence on human society has given them the sobriquet of "man's best friend".

Domestic dogs

Temporal range: **Late Pleistocene – Present**
(at least 14,700–0 years BP)

Selection of the different breeds of dog

Conservation status

Domesticated

Scientific classification

Kingdom: Animalia
Phylum: Chordata
Class: Mammalia
Order: Carnivora
Family: Canidae
Genus: *Canis*
Species: *C. lupus*
Subspecies: *C. l. familiaris*^[1]

Trinomial name

Canis lupus familiaris^[1]
Linnaeus, 1758

Synonyms

Canis familiaris Linnaeus, 1758^[2]

Dogs show great morphological variation

Contents

- Terminology
- Taxonomy
- Origin
- Biology
 - Anatomy
 - 4.1.1 Size and weight
 - 4.1.2 Senses
 - 4.1.3 Coat
 - 4.1.4 Tail
 - 4.1.5 Differences from wolves
 - Health
 - 4.2.1 Lifespan
 - Reproduction
 - 4.3.1 Neutering
 - Inbreeding depression
- Intelligence, behavior, and communication
 - 5.1 Intelligence
 - 5.2 Behavior
 - 5.3 Communication
- Breeds
- Roles with humans
 - 8.1 Early roles
 - 8.2 As pets
 - 8.3 Work
 - 8.4 Sports and shows
 - 8.5 As food
 - 8.6 Health risks to humans
 - 8.7 Health benefits for humans
 - 8.8 Shelters
- Cultural depictions
 - 9.1 Mythology
 - 9.2 Literature

This article is about the domestic dog. For related species known as "dogs", see *Canidae*. For other uses, see *Dog (disambiguation)*.

The **domestic dog** (*Canis lupus familiaris* when considered a subspecies of the wolf or *Canis familiaris* when considered a distinct species)^[4] is a member of the genus *Canis* (canines), which forms part of the wolf-like canids,^[5] and is the most widely abundant terrestrial carnivore.^{[6][7][8][9][10]} The dog and the extant gray wolf are sister taxa^{[11][12][13]} as modern wolves are not closely related to the wolves that were first domesticated^{[12][13]} which implies that the direct ancestor of the dog is extinct.^[14] The dog was the first species to be domesticated^{[13][15]} and has been selectively bred over millennia for various behaviors, sensory capabilities, and physical attributes.^[16]

Their long association with humans has led dogs to be uniquely attuned to human behavior^[17] and they are able to thrive on a starch-rich diet that would be inadequate for other canid species.^[18] Dogs vary widely in shape, size and colors.^[19] Dogs perform many roles for humans, such as hunting, herding, pulling loads, protection, assisting police and military, companionship and, more recently, aiding disabled people and therapeutic roles. This influence on human society has given them the sobriquet of "man's best friend".

Domestic dogs

Temporal range: **Late Pleistocene – Present**
(at least 14,700–0 years BP)

Selection of the different breeds of dog

Conservation status

Domesticated

Scientific classification

Kingdom: Animalia
Phylum: Chordata
Class: Mammalia
Order: Carnivora
Family: Canidae
Genus: *Canis*
Species: *C. lupus*
Subspecies: *C. l. familiaris*^[1]

Trinomial name

Canis lupus familiaris^[1]
Linnaeus, 1758

Synonyms

Canis familiaris Linnaeus, 1758^[2]

Contents

- Terminology
- Taxonomy
- Origin
- Biology
 - Anatomy
 - 4.1.1 Size and weight
 - 4.1.2 Senses
 - 4.1.3 Coat
 - 4.1.4 Tail
 - 4.1.5 Differences from wolves
 - Health
 - 4.2.1 Lifespan
 - Reproduction
 - 4.3.1 Neutering
 - Inbreeding depression
- Intelligence, behavior, and communication
 - 5.1 Intelligence
 - 5.2 Behavior
 - 5.3 Communication
- Breeds
- Roles with humans
 - 8.1 Early roles
 - 8.2 As pets
 - 8.3 Work
 - 8.4 Sports and shows
 - 8.5 As food
 - 8.6 Health risks to humans
 - 8.7 Health benefits for humans
 - 8.8 Shelters
- Cultural depictions
 - 9.1 Mythology
 - 9.2 Literature

Windows High Contrast demo

Comparison to related features

Related OS/extension feature comparison

	Dark Mode	Inverted Colors	Text Contrast	Increase Contrast	High Contrast extension	High Contrast
Supported Platform	MacOS, Windows	iOS, Android, Windows	Android (experimental)	MacOS, iOS	Chrome	Windows
Contrast “promise”	Should meet min WCAG requirements	No promise	High for text but dependent on background	Intermediate	Varies by theme and web content	Guaranteed based on user choice
Applies to	UI, app content	UI, app content	UI, app content	UI, app content	Web content	UI, app/web content
Modifiable by users	No	No	No	No (legacy modifiable)	No (outside of theme selection)	Yes, limited color theme
Forced to web content	No	Yes	No	No	Yes	Yes
Modifiable by authors	Yes*	No	No	Yes*	No	Yes

Related CSS features comparison

	prefers-color-scheme	prefers-contrast	inverted-colors	high-contrast
Related browser/OS features	MacOS and Windows light/dark mode	MacOS/iOS increase contrast; Android text contrast?	iOS, Android, Windows color inversion	Windows high contrast
Granularity of detection in web content	No preference, light, dark	No preference, low, high (increased keyword?)	On/off	On/off; additionally, detection of preset themes
Expectations on author	Author styles theme; hints as to supported schemes	Self-authored styles; authors need guidance on handling ratios	Honors user preference first; author can adjust	Honors user preference first; author can adjust
Additional info available to author	None	None	None	Abstracted system colors based on user-set preferences
Implementations	Webkit; Gecko in progress; Blink i2i	None	Webkit	Trident, EdgeHTML

Proposal: let authors target the
High Contrast feature itself

Most closely related in concept to inverted-colors

Considers user preference as highest directive

Forced on web content

Built expressly with accessibility in mind

Many use cases work out of the box; author involvement expected to be minimal/tweaks

High usage

4% of active Windows machines

This makes High Contrast by far the most popular in-box assistive technology on the Windows platform

Consistent developer story

Easier to maintain existing styles for IE and new High Contrast styles for modern Windows browsers (and any other similar future implementations) when authoring story is consistent with familiar approach

high-contrast MQ explainer