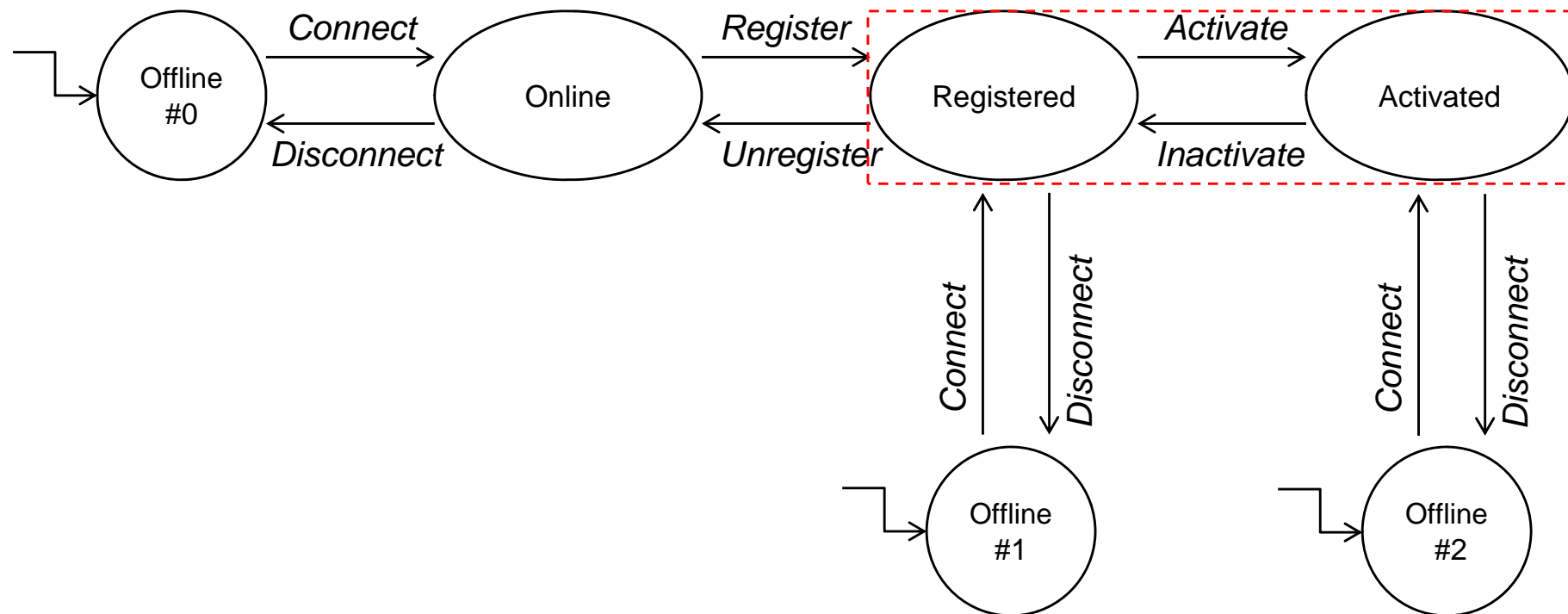


WoT Servient Lifecycle (State Diagram)

Scope of WoT Servient API Definition



“Offline” or “Stand Alone”: not connected status

“Online”: just connected to IP reachable network, but NOT worked as WoT servient

“Registered” or “Paired”: URI-like address is registered and worked as WoT servient

“Activated” or “Connected”: powered on the device and support full service of “things” as WoT servient