

ODRL Generic Rule Evaluation Flow


(revision 1, 2017-11-02)

Based on the ODRL Information Model (IM) Candidate Recommendation
of 26 September 2017, <https://www.w3.org/TR/odrl-model/>

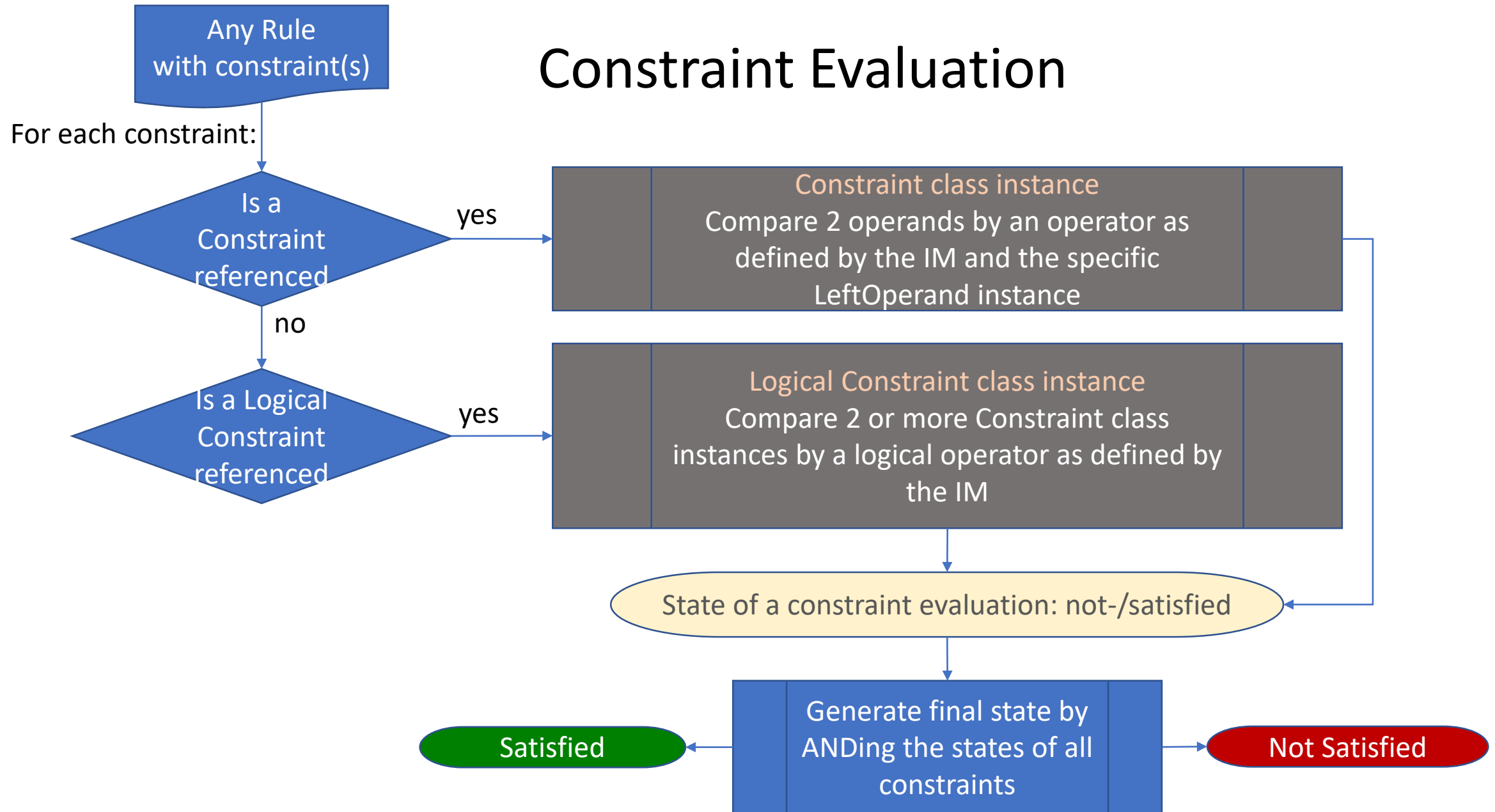
By Michael Steidl (IPTC/NewsIT)

This document covers how a Logical/Constraint, a Duty, a Permission or a Prohibition should be evaluated in a generic way.

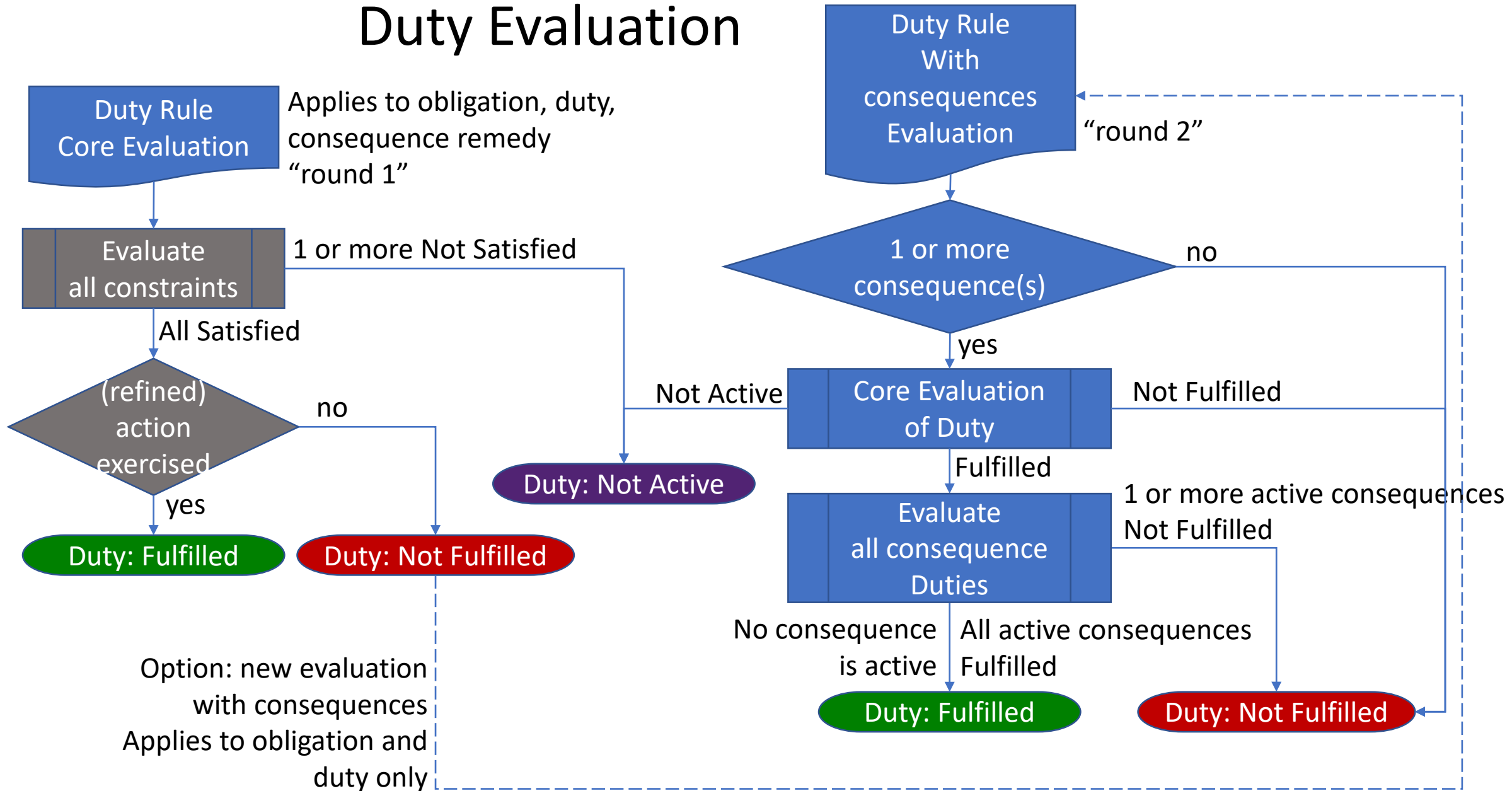
Legend:

- Process or decision boxes in **blue**: processed as defined by the IM
- Process or decision boxes in **grey**: considered as black box, generating/retrieving these values is not part of a Generic Rule Evaluation, only their state is considered.
-  = an evaluation process covered by this document and/or the IM
- Casing:
 - properties start with lower case (constraint, duty, obligation, consequence, remedy)
 - classes start with upper case (Rule, Duty, Permission, Prohibition)

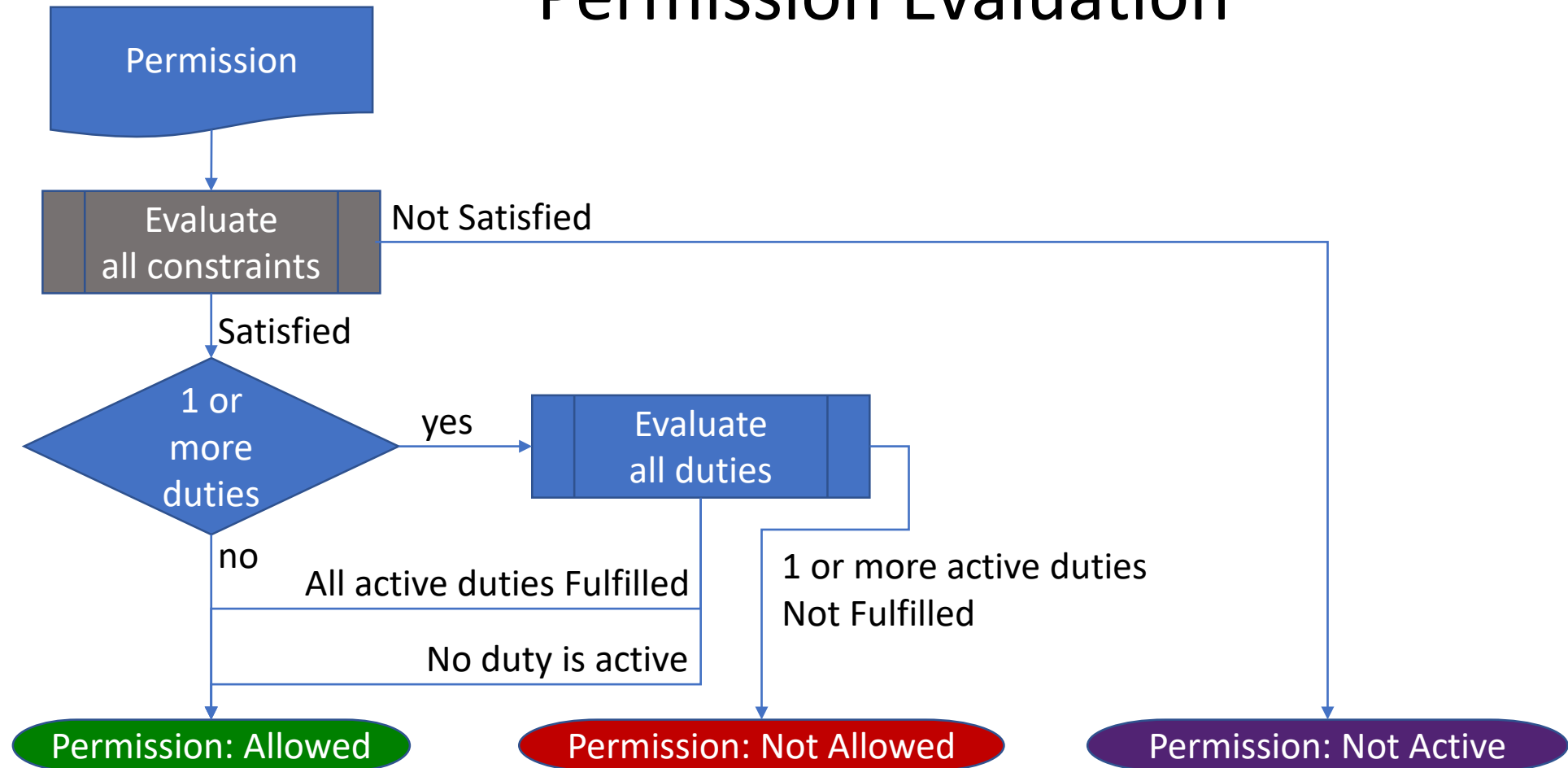
Constraint Evaluation



Duty Evaluation



Permission Evaluation



Prohibition Evaluation

