

# DCAT-AP implementation guide

[European Commission Application Profile](#)

[Background](#)

[Objectives](#)

[Data Model](#)

[Purpose of this guide](#)

[Dcat implementation recommendation : DCAT-AP profile](#)

[Mandatory fields](#)

[Catalog Description](#)

[dcat:catalog](#)

[dct:title](#)

[dct:description](#)

[dct:publisher](#)

[dcat:dataset](#)

[Example of the mandatory fields describing a catalogue](#)

[Description of the dataset](#)

[dct:title](#)

[dct:description](#)

[Example of the record for a dataset showing mandatory fields](#)

[Catalogue Change History](#)

[foaf:primaryTopic](#)

[dct:modified](#)

[Example of Catalogue revision history showing the mandatory fields](#)

[Distribution](#)

[dcat:distribution](#)

[Mandatory Fields](#)

[dcat:accessUrl](#)

[Example of the record for a distribution of a data set showing the mandatory fields](#)

[Recommended Fields](#)

[Catalog](#)

[foaf:homepage](#)

[dct:language](#)

[dct:licence](#)

[dct:issued](#)

[dcat:themeTaxonomy](#)

[dct:modified](#)

[Example catalogue description using mandatory and recommended fields](#)

[Catalog record](#)

[dct:issued](#)

[adms:status](#)

[Example of the catalogue revision history showing mandatory and recommended fields](#)

#### [Dataset](#)

[adms:contactPoint](#)

[dcat:distribution](#)

[dcat:keyword](#)

[dct:publisher](#)

[dcat:theme](#)

[Example of a dataset record with mandatory and recommended fields](#)

#### [Distribution](#)

[dct:description](#)

[dcat:mediaType](#)

[dct:licence](#)

[Example of the record for a downloadable distribution of a dataset using mandatory and recommended fields](#)

#### [Optional Fields](#)

##### [Catalogue](#)

[dcat:record](#)

[dct:rights](#)

[dct:spatial](#)

[Example of a catalogue description using mandatory, recommended and optional fields](#)

##### [Catalogue record](#)

[dct:description](#)

[dct:title](#)

[Example of the catalogue revision history showing mandatory, recommended and optional fields](#)

##### [Dataset](#)

[dct:conformsTo](#)

[dct:accrualPeriodicity](#)

[dct:identifier](#)

[dcat:landingPage](#)

[dct:language](#)

[dct:issued](#)

[dct:spatial](#)

[dct:temporal](#)

[dct:modified](#)

[adms:version](#)

[adms:versionNotes](#)

[Example of the description of a dataset using mandatory, recommended and optional fields](#)

### Distribution

[dcat:byteSize](#)

[dcat:downloadUrl](#)

[dct:title](#)

[dct:issued](#)

[dct:rights](#)

[dct:mediaType](#)

[adms:status](#)

[Example of the record for a downloadable distribution of a dataset using mandatory, recommended and optional fields](#)

### Management of Provenance

[Annexe 1 : Example of a complete metadata record in RDF/XML](#)

[Example of a catalogue record using mandatory, recommended and optional fields](#)

[Annexe 2 : Metadata example in Turtle](#)

[Annexe 3 : Example of record showing DCAT to INSPIRE alignment](#)

[Annexe 4 : Alignment between GEMET and Eurovoc](#)

[References :](#)

[Implementations :](#)

# European Commission Application Profile

## Background

The DCAT schema tries to standardise the description of catalogues and catalogue records for public sector information. The schema is actually maintained by the standards body of the web, W3C. The standard is available on an open license and can be found at <http://www.w3.org/TR/vocab-dcat>

The scheme is organised using the concepts of the catalogue (`dcat:catalogue`), the dataset (`dcat:dataset`), the controlled vocabulary (`skos:ConceptScheme`), the category (`skos:Concept`), agents (`foaf:Agent`) and resources (`dcat:resource`).

For each of these classes, the fields (mandatory, recommended and optional) have been defined by a working group coordinated by the European Commission in a way that standardises the implementation of this metadata schema. The results of the working group are available at [http://joinup.ec.europa.eu/asset/dcat\\_application\\_profile/asset\\_release/dcat-application-profile-d-ata-portals-europe-final](http://joinup.ec.europa.eu/asset/dcat_application_profile/asset_release/dcat-application-profile-d-ata-portals-europe-final)

## Objectives

This metadata schema can be used in different ways; it can describe a catalogue (`dcat:catalogue`) of datasets maintained and published by an organisation, but equally it can be used to describe in fine detail each of the component parts of that catalogue, namely the datasets (`dcat:dataset`), descriptions of the files (`dcat:resource`) which have been made accessible by different actors (`foaf:agent`) involved in the process of making them available.

It is also recommended to use controlled vocabularies (`skos:ConceptScheme`), i.e. closed lists of terms that allow the categorisation of the datasets, which are published on the internet in a way that allows the discovery and merging of datasets described in other catalogues. Using this standard allows users to be provided with listings that are structured consistently and from which they can understand the content of the resources.

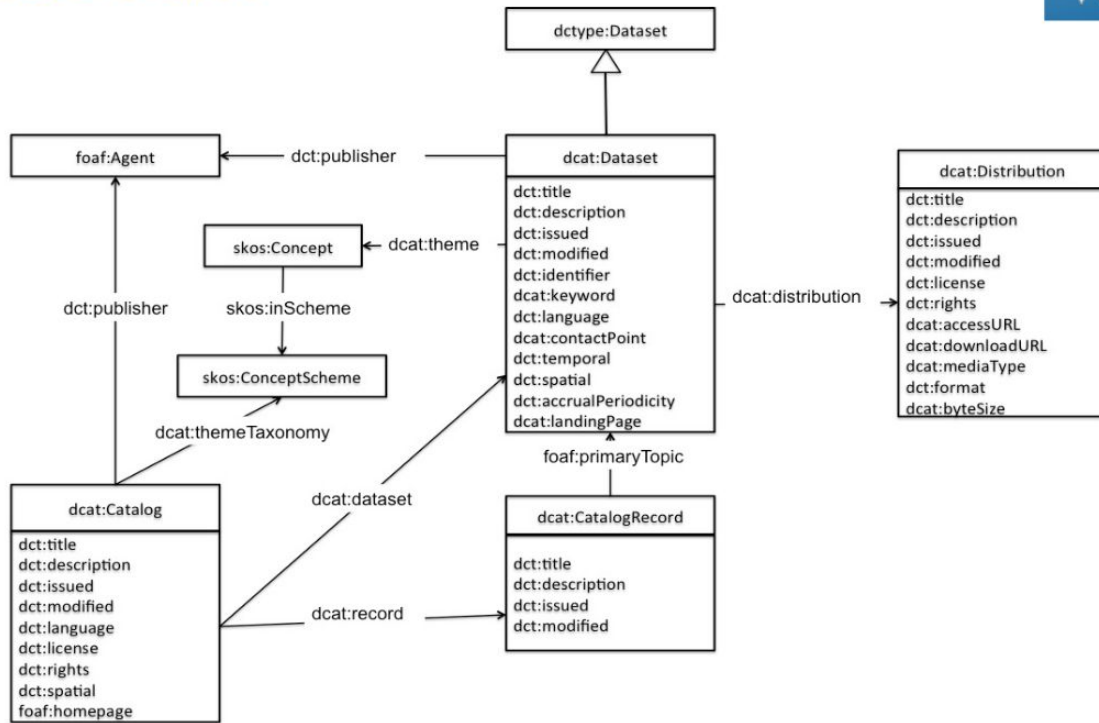
It also takes into account the description of the standards in force in the domains of cultural heritage or geographical description, and provides an extensible framework for interoperability with description languages used in these domains.

A study being conducted by the Joint Research Centre of the European Commission ( Unit H.6 Digital Earth and Reference Data ) attempting to align the INSPIRE metadata with DCAT [ DCATAP ] is underway.

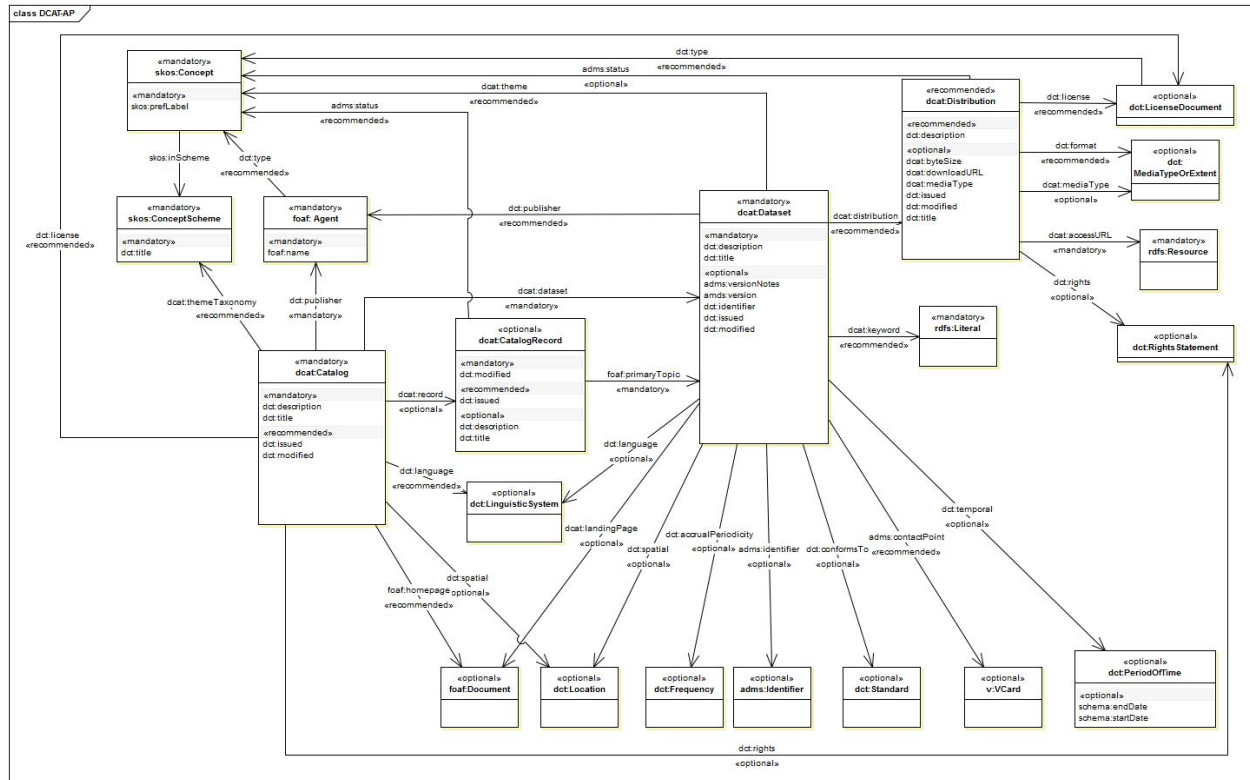
## Data Model

The application profile proposed by the European Commission defines a minimum level of interoperability by specifying for each object class the metadata fields (mandatory, recommended and optional) from the schema defined by the W3C. The diagram below illustrates the DCAT schema.

## W3C DCAT



The diagram below shows the European Commission’s ISA working group proposal for the DCAT-AP data model



## Purpose of this guide

This guide aims to help you make use of the DCAT-AP by providing a description of each element of the application profile, including such information as the cardinality, the degree of importance (mandatory, recommended or optional) and so on. The guide also presents information about good practice and provides an illustration of each element's use.

At the same time, the DCAT-AP metadata standard and the implementation profile detailed here have been cross-referenced against the repository of good practice "Opquast" developed by the open data community in France. It contains 72 good practices organized into 13 categories and has been translated into English. It is freely available for download on the opquast Temesis website under the terms of the CC-BY-SA license at the following address :

<http://checklists.opquast.com/fr/opendata>

Temesis also developed a toolset to help validate the implementation of the Opquast best practices and this is available as a Firefox browser extension, distributed under an open source license, from <https://desktop.opquast.com/>

For each of the metadata elements described in this document, the relationship with the good practice guidance developed in the Opquast repository has been specified wherever possible.

In starting this guide we particularly want to refer to the following Opquast good practices

- "The metadata associated with each data set are available in a standard format "
- "The metadata describing the data set is structured normatively"
- "catalog metadata is available in the form of a data set"
- " the metadata catalog is accessible using a standardized protocol"

These good practices apply to the process of making the catalog descriptive record and its component parts available on the Internet in the form of downloadable files or queryable services, delivered in a standardized machine-readable structure . In cases where there is a proposed alignment between a DCAT-AP descriptor and a DCAT INSPIRE descriptor, examples of use are given.

## Dcat implementation recommendation : DCAT-AP profile

### Mandatory fields

The following fields are mandatory when a `dcat:catalogue` element is defined.

RDF Class:	<a href="#">dcat:Catalog</a>
Definition:	A data catalog is a curated collection of metadata about datasets.
Usage note:	Typically, a web-based data catalog is represented as a single instance of this class.

## Catalog Description

A data catalog is a collection of metadata describing a one or more datasets.

### `dcat:catalog`

Field	Catalogue
Cardinality	(1,1)
Required	Mandatory
Acceptible values	A string of characters defining the address of the catalogue

<b>Usage notes</b>	<p>Preferably, the string defining the catalog class should be used to point directly to the page giving access to the the catalogue metadata (i.e. it should be a URL that resolves to an export of the catalogue metadata)</p> <pre>&lt;!-- dcat:Catalog --&gt;   &lt;rdf:Description rdf:about="http://www.w3.org/ns/dcat#Catalog"&gt;     &lt;vann:usageNote xml:lang="en"&gt;Mandatory class. A catalogue or repository that hosts the Datasets being described.&lt;/vann:usageNote&gt;     &lt;dct:identifier xml:lang="en"&gt;dcat:Catalog&lt;/dct:identifier&gt;     &lt;rdfs:label xml:lang="en"&gt;Catalogue&lt;/rdfs:label&gt;     &lt;isDefinedBy rdf:resource="http://www.w3.org/TR/2013/WD-vocab-dcat-20130312/#class-catalog"/&gt;     &lt;comment xml:lang="en"&gt;A curated collection of metadata about datasets&lt;/comment&gt;   &lt;/rdf:Description&gt;</pre>
<b>Alignment to INSPIRE</b>	<p>Spatial data service type Resource type</p>
<b>Example</b>	<p>dcat:catalog rdf:about="https://catalogue.datalocale/dataset/catalogue"</p>

**opquast BP:** <http://checklists.opquast.com/fr/opendata/criteria/20983/>

The metadata catalogue is provided as a data set

### dct:title

<b>Field</b>	<b>title</b>
<b>Cardinality</b>	(1,n)
<b>Required</b>	Mandatory
<b>Acceptible values</b>	rdf :PlainLiteral : character string
<b>Usage notes</b>	<p>Acronyms should be avoided if possible</p> <pre>&lt;!-- Data Catalogue - dct:title --&gt;   &lt;rdf:Description rdf:about="http://purl.org/dc/terms/title"&gt;     &lt;vann:usageNote xml:lang="en"&gt;Mandatory property. This property contains a name given to the Catalogue. This property can be repeated for parallel language versions</pre>



	<pre> of the name.&lt;/vann:usageNote&gt;   &lt;dct:identifier xml:lang="en"&gt;dct:title&lt;/dct:identifier&gt;   &lt;rdfs:label xml:lang="en"&gt;Data Catalogue - title&lt;/rdfs:label&gt;   &lt;rdfs:isDefinedBy rdf:resource="http://dublincore.org/documents/dcmi-terms/#terms-title" /&gt;   &lt;rdfs:comment xml:lang="en"&gt;&lt;/rdfs:comment&gt; &lt;/rdf:Description&gt; </pre>
<b>Alignment to INSPIRE</b>	Resource title
<b>Example</b>	dct:title "Public Data Catalog of the Gironde"

**opquast BP** : <http://checklists.opquast.com/fr/opendata/criteria/20941/>

The dataset includes at least a title and a description

dct:description

Field	description
<b>Cardinality</b>	(1,n)
<b>Required</b>	Mandatory
<b>Acceptable values</b>	rdf:PlainLiteral : character string
<b>Usage notes</b>	<p>This field contains human-readable content</p> <pre> &lt;!-- Catalogue Record - description --&gt; &lt;rdf:Description rdf:about="http://purl.org/dc/terms/description"&gt;   &lt;vann:usageNote xml:lang="en"&gt;Optional property. This property contains a free-text account of the record. This property can be repeated for parallel language versions of the description.&lt;/vann:usageNote&gt;   &lt;dct:identifier xml:lang="en"&gt;dct:description&lt;/dct:identifier&gt;   &lt;rdfs:label xml:lang="en"&gt;Catalogue Record - description&lt;/rdfs:label&gt;   &lt;rdfs:isDefinedBy rdf:resource="http://dublincore.org/documents/dcmi-terms/#terms-description" /&gt;   &lt;rdfs:comment xml:lang="en"&gt;&lt;/rdfs:comment&gt; &lt;/rdf:Description&gt; </pre>
<b>Alignment to INSPIRE</b>	Resource abstract
<b>Example</b>	dct:description "Public Data Catalog of the Gironde territory giving access to the centralised open resources ( i.e. those published under a license that allows the free re-use of data under the terms of the chosen license) published and distributed by communities and Girondins citizens."

**opquast BP** :The data publisher gives details of their data release policy

<http://checklists.opquast.com/fr/opendata/criteria/21001/>

### dct:publisher

Field	Publisher
Cardinality	(1,1)
Required	Mandatory
Acceptable values	character string. hyperlink
Usage notes	<p>This element refers to the organisation that is publishing the data</p> <pre> &lt;!-- Data Catalogue - dct:publisher --&gt;   &lt;rdf:Description rdf:about="http://purl.org/dc/terms/publisher"&gt;     &lt;vann:usageNote xml:lang="en"&gt;Mandatory property. This property refers to an entity (organisation) responsible for making the Catalogue available.&lt;/vann:usageNote&gt;     &lt;dct:identifier xml:lang="en"&gt;dct:publisher&lt;/dct:identifier&gt;     &lt;rdfs:label xml:lang="en"&gt;Data Catalogue - publisher&lt;/rdfs:label&gt;     &lt;rdfs:isDefinedBy rdf:resource="http://dublincore.org/documents/dcmi-terms/#terms-publis her" /&gt;     &lt;rdfs:comment xml:lang="en"&gt;&lt;/rdfs:comment&gt;   &lt;/rdf:Description&gt; </pre>
Alignment to INSPIRE	Responsible organisation / Publisher
Example	<pre> dct:publisher "General Council of the Gironde" dct:publisher :body/transparency-office ;  :body/transparency-office   a foaf:Agent ;   rdfs:label "Transparency Office" ; . </pre>

opquast BP: <http://checklists.opquast.com/fr/opendata/criteria/20959/>

The dataset/s is accompanied by information about how to contact the creator or publisher of the data

## dcat:dataset

Field	Dataset
Cardinality	(1,n)
Required	Mandatory
Acceptible values	character string
Usage notes	<p>Preferably, the strings attached to the catalogue class are used to point directly to the information relating to the datasets contained in the catalogue</p> <pre>&lt;!-- dcat:Dataset --&gt;   &lt;rdf:Description rdf:about="http://www.w3.org/ns/dcat#Dataset"&gt;     &lt;vann:usageNote xml:lang="en"&gt;Mandatory class. A catalogue or repository that hosts the Datasets being described.&lt;/vann:usageNote&gt;     &lt;dct:identifier xml:lang="en"&gt;dcat:Dataset&lt;/dct:identifier&gt;     &lt;rdfs:label xml:lang="en"&gt;Dataset&lt;/rdfs:label&gt;     &lt;isDefinedBy rdf:resource="http://www.w3.org/TR/2013/WD-vocab-dcat-20130312/#class-dataset"/&gt;     &lt;comment xml:lang="en"&gt;A collection of data, published or curated by a single source, and available for access or download in one or more formats&lt;/comment&gt;   &lt;/rdf:Description&gt;</pre>
Alignment to INSPIRE	Coupled resource
Example	dcat:Dataset rdf:about="https://data.some.org/catalog/datasets/1"

**opquast BP:** <http://checklists.opquast.com/fr/opendata/criteria/20938/>

Each dataset is accompanied by a description

### Example of the mandatory fields describing a catalogue

```
<?xml version="1.0" encoding="utf-8" ?>
<rdf:RDF
xmlns:dct="http://purl.org/dc/terms/"
xmlns:dc="http://purl.org/dc/elements/1.1/"
xmlns:dcat="http://www.w3.org/ns/dcat#"
xmlns:foaf="http://xmlns.com/foaf/0.1/"
xmlns:xsd="http://www.w3.org/2001/XMLSchema#"
xmlns:rdfs="http://www.w3.org/2000/01/rdf-schema#"

```

```

xmlns:rdf="http://www.w3.org/1999/02/22-rdf-syntax-ns#">
<dcatalog:Catalog rdf:about="https://catalogue.data.gironde.fr/dataset/catalog">
  <dcatalog:title>Catalogue de données publiques mutualisé de Gironde</dcatalog:title>
  <dcatalog:description>catalogue de données publiques du territoire Girondin permettant
l'accès centralisé aux ressources ouvertes (c'est-à-dire paratagées avec une licence
permettant la libre ré-utilisation des données conformément aux termes de la licence
choisie) publiées de manière distribuées par les collectivités et les citoyens
girondins.
</dcatalog:description>
<dcatalog:publisher>
  <foaf:Organization>
    <foaf:homepage rdf:resource="http://www.gironde.fr"/>
    <dcatalog:title xml:lang="ca">Département de la Gironde</dcatalog:title>
  </foaf:Organization>
</dcatalog:publisher>
  <dcatalog:dataset>
<dcatalog:Dataset rdf:about="https://data.some.org/catalog/datasets/1">
  </dcatalog:dataset>
</dcatalog:catalog>

```

## Description of the dataset

A dataset is a published unit and generally consists of a file or set of files relating to the same subject

RDF Class:	<a href="#">dcatalog:Dataset</a>
Definition:	A collection of data, published or curated by a single agent, and available for access or download in one or more formats.
Sub class of:	<a href="#">dctype:Dataset</a>
Usage note:	This class represents the actual dataset as published by the dataset publisher. In cases where a distinction between the actual dataset and its entry in the catalog is necessary (because metadata such as modification date and maintainer might differ), the <a href="#">catalog record</a> class can be used for the latter.

dcatalog:title

<b>Field</b>	<b>title</b>
<b>Cardinality</b>	(1,n)
<b>Required</b>	Mandatory
<b>Acceptible values</b>	string
<b>Usage notes</b>	<p>rdf:PlainLiteral Acronyms should be avoided if possible</p> <pre> &lt;!-- Dataset - title --&gt; &lt;rdf:Description rdf:about="http://purl.org/dc/terms/title"&gt;   &lt;vann:usageNote xml:lang="en"&gt;Mandatory property. This property contains a name given   to the Dataset. This property can be repeated for parallel language versions of the   name.&lt;/vann:usageNote&gt;   &lt;dct:identifier xml:lang="en"&gt;dct:title&lt;/dct:identifier&gt;   &lt;rdfs:label xml:lang="en"&gt;Dataset - title&lt;/rdfs:label&gt;   &lt;rdfs:isDefinedBy   rdf:resource="http://dublincore.org/documents/dcmi-terms/#terms-title" /&gt;   &lt;rdfs:comment xml:lang="en"&gt;&lt;/rdfs:comment&gt; &lt;/rdf:Description&gt; </pre>
<b>Alignment to INSPIRE</b>	Resource title
<b>Example</b>	dct:title

opquast BP: <http://checklists.opquast.com/fr/opendata/criteria/20941/>

The data set includes at least one title and description

#### dct:description

<b>Field</b>	<b>description</b>
<b>Cardinality</b>	(1,n)
<b>Required</b>	Mandatory
<b>Acceptible values</b>	<p>rdf:PlainLiteral string</p>
<b>Usage notes</b>	<p>This field must contain human-readable information.</p> <pre> &lt;!-- Dataset - description --&gt; </pre>

	<pre> &lt;rdf:Description rdf:about="http://purl.org/dc/terms/description"&gt;   &lt;vann:usageNote xml:lang="en"&gt;Mandatory property. This property contains a free-text   account of the Dataset. This property can be repeated for parallel language versions of the   description.&lt;/vann:usageNote&gt;   &lt;dct:identifier xml:lang="en"&gt;dct:description&lt;/dct:identifier&gt;   &lt;rdfs:label xml:lang="en"&gt;Dataset - description&lt;/rdfs:label&gt;   &lt;rdfs:isDefinedBy   rdf:resource="http://dublincore.org/documents/dcmi-terms/#terms-description" /&gt;   &lt;rdfs:comment xml:lang="en"&gt;&lt;/rdfs:comment&gt; &lt;/rdf:Description&gt; </pre>
<b>Alignment to INSPIRE</b>	Resource abstract
<b>Example</b>	dct:description: This data set contains a list of sports facilities described by their name, postal address and geolocation as well as the list of sports that may be played there

**opquast BP:** <http://checklists.opquast.com/fr/opendata/criteria/20941/>

The data set includes at least one title and description

### Example of the record for a dataset showing mandatory fields

```

<?xml version="1.0" encoding="utf-8" ?>
<rdf:RDF
xmlns:dct="http://purl.org/dc/terms/"
xmlns:dc="http://purl.org/dc/elements/1.1/"
xmlns:dcat="http://www.w3.org/ns/dcat#"
xmlns:foaf="http://xmlns.com/foaf/0.1/"
xmlns:xsd="http://www.w3.org/2001/XMLSchema#"
xmlns:rdfs="http://www.w3.org/2000/01/rdf-schema#"
xmlns:rdf="http://www.w3.org/1999/02/22-rdf-syntax-ns#">
<dcat:Catalog rdf:about="https://catalogue.datalocale.fr/dataset/catalogue-datalocale">
  <dct:title>Catalogue de données publiques mutualisé de Gironde</dct:title>
<dcat:Dataset
rdf:about="http://catalogue.datalocale.fr/dataset/liste-equipements_sportifs-cg33">
<dct:title>Liste des équipements sportifs du Département de la Gironde</dct:title>
<dct:description>Ce jeu de données contient une liste d'équipement sportifs décrit par
leur nom, leur coordonnées postales et leur géolocalisation ainsi que par la liste des
activités sportives qui peuvent y être pratiquées</dct:description>
  </dcat:dataset>
<dcat:catalogueRecord>
<foaf:primaryTopic
rdf:resource="http://catalogue.datalocale.fr/dataset/liste-equipements_sportifs-cg33"/>
<dct:modified>2012-01-15</dct:modified>
<dct:issued>2001-01-15</dct:issued>
<adms:status>updated</adms:status>
<dct:description>mise à jour de la couverture géographique du jeu de

```

```

données</dct:description>
<dct:title>mise à jour des métadonnées</dct:title>
</dcat:catalogueRecord>
</dcat:catalog>

```

## Catalogue Change History

dcat:catalogueRecord

A catalogue of data changes following updates. It may be useful to provide users with access to the change history

<b>RDF Class:</b>	<a href="#">dcat:CatalogRecord</a>
<b>Definition:</b>	A record in a data catalog, describing a single dataset.
<b>Usage note</b>	This class is optional and not all catalogs will use it. It exists for catalogs where a distinction is made between metadata about a <i>dataset</i> and metadata about the <i>dataset's entry in the catalog</i> . For example, the <i>publication date</i> property of the <i>dataset</i> reflects the date when the information was originally made available by the publishing agency, while the publication date of the <i>catalog record</i> is the date when the dataset was added to the catalog. In cases where both dates differ, or where only the latter is known, the <i>publication date</i> should only be specified for the catalog record. Notice that the W3C PROV Ontology [ <a href="#">prov-o</a> ] allows describing further provenance information such as the details of the process and the agent involved in a particular change to a dataset.

foaf:primaryTopic

<b>Field</b>	The dataset which has been modified
<b>Cardinality</b>	(1,1)
<b>Required</b>	Mandatory
<b>Acceptable values</b>	URL of the dataset

<b>Usage notes</b>	<p>This field allows you to specify the dataset that has been changed</p> <pre> &lt;!-- Catalogue Record - primary topic --&gt; &lt;rdf:Description rdf:about="http://xmlns.com/foaf/0.1/primaryTopic"&gt;   &lt;vann:usageNote xml:lang="en"&gt;Mandatory property. This property links the Catalogue Record to the Dataset described in the record.&lt;/vann:usageNote&gt;   &lt;dct:identifier xml:lang="en"&gt;foaf:primaryTopic&lt;/dct:identifier&gt;   &lt;rdfs:label xml:lang="en"&gt;Catalogue Record - primary topic&lt;/rdfs:label&gt;   &lt;rdfs:isDefinedBy rdf:resource="http://xmlns.com/foaf/spec/#term_primaryTopic" /&gt;   &lt;rdfs:comment xml:lang="en"&gt;This property links the Catalogue Record to the Dataset described in the record.&lt;/rdfs:comment&gt; &lt;/rdf:Description&gt; </pre>
<b>Alignment to INSPIRE</b>	
<b>Example</b>	<p>foaf:primaryTopic  <a href="http://catalogue.datalocale.fr/dataset/bro_gestion-forestiere">http://catalogue.datalocale.fr/dataset/bro_gestion-forestiere</a></p>

**opquast BP:** <http://checklists.opquast.com/fr/opendata/criteria/20953/>

Each dataset has an associated change log record

### dct:modified

<b>Field</b>	<b>Modification date</b>
<b>Cardinality</b>	(1,1)
<b>Required</b>	Mandatory
<b>Acceptable values</b>	xsd:date Date (YYYY-MM-DD)
<b>Usage notes</b>	<p>Dates must conform to ISO 8601 YYYY-MM-DD. Use "01" when the day of change is unknown.</p> <pre> &lt;!-- Catalogue Record - update/ modification date --&gt; &lt;rdf:Description rdf:about="http://purl.org/dc/terms/modified"&gt;   &lt;vann:usageNote xml:lang="en"&gt;Mandatory property. This property contains the most recent date on which the Catalogue entry was changed or modified.&lt;/vann:usageNote&gt;   &lt;dct:identifier xml:lang="en"&gt;dct:modified&lt;/dct:identifier&gt;   &lt;rdfs:label xml:lang="en"&gt;Catalogue Record - update/ modification date&lt;/rdfs:label&gt;   &lt;rdfs:isDefinedBy rdf:resource="http://dublincore.org/documents/dcmi-terms/#terms-modified" /&gt;   &lt;rdfs:comment xml:lang="en"&gt;This property contains the most recent date on which the Catalogue entry was changed or modified.&lt;/rdfs:comment&gt; &lt;/rdf:Description&gt; </pre>



<b>Alignment to INSPIRE</b>	Temporal reference / Date of last revision
<b>Example</b>	dct:modified 2012-01-15 dct:modified "2015-02-01"^^xsd:date ;

**opquast BP:** <https://checklists.opquast.com/fr/opendata/criteria/20943/>

Each dataset is accompanied by a modification date

### Example of Catalogue revision history showing the mandatory fields

```
<?xml version="1.0" encoding="utf-8" ?>
<rdf:RDF
xmlns:dct="http://purl.org/dc/terms/"
xmlns:dc="http://purl.org/dc/elements/1.1/"
xmlns:dcat="http://www.w3.org/ns/dcat#"
xmlns:foaf="http://xmlns.com/foaf/0.1/"
xmlns:xsd="http://www.w3.org/2001/XMLSchema#"
xmlns:rdfs="http://www.w3.org/2000/01/rdf-schema#"
xmlns:rdf="http://www.w3.org/1999/02/22-rdf-syntax-ns#">
<dcat:Catalog rdf:about="https://catalogue.datalocale.fr/dataset/catalog">
  <dct:title>Catalogue de données publiques mutualisé de Gironde</dct:title>
  <dcat:dataset>
<dcat:Dataset rdf:about="https://data.some.org/catalog/datasets/1">
  </dcat:dataset>
<dcat:catalogueRecord>
<foaf:primaryTopic
rdf:resource="http://catalogue.datalocale.fr/dataset/bro_gestion-forestiere"/>
<dct:modified>2012-01-15</dct:modified>
</dcat:catalogueRecord>
</dcat:catalog>
```

## Distribution

A distribution is a way to make available a file containing the information described by the data contained in the catalog.

<b>RDF class:</b>	<a href="#"><u>dcat:Distribution</u></a>
<b>Definition:</b>	Represents a specific available form of a dataset. Each dataset

	might be available in different forms, these forms might represent different formats of the dataset or different endpoints. Examples of distributions include a downloadable CSV file, an API or an RSS feed
<b>Usage note:</b>	This represents a general availability of a dataset it implies no information about the actual access method of the data, i.e. whether it is a direct download, API, or some through Web page. The use of <a href="#">dcat:downloadURL</a> property indicates directly downloadable distributions.

### dcat:distribution

<b>Field</b>	<b>distribution</b>
<b>Cardinality</b>	(0,n)
<b>Required</b>	Recommended class
<b>Acceptible values</b>	see the usage notes
<b>Usage notes</b>	<p>The distribution field is a concatenation where appropriate of the following: AccessURL , format, endpoint , language, size .</p> <pre> &lt;!-- dcat:Distribution --&gt;   &lt;rdf:Description rdf:about="http://www.w3.org/ns/dcat#Distribution"&gt;     &lt;vann:usageNote xml:lang="en"&gt;Recommended class. A physical embodiment of the Dataset in a particular format.&lt;/vann:usageNote&gt;     &lt;dct:identifier xml:lang="en"&gt;dcat:Distribution&lt;/dct:identifier&gt;     &lt;rdfs:label xml:lang="en"&gt;Distribution&lt;/rdfs:label&gt;     &lt;isDefinedBy rdf:resource="http://www.w3.org/TR/2013/WD-vocab-dcat-20130312/#class-distributio n"/&gt;     &lt;comment xml:lang="en"&gt;represents a specific available form of a dataset. Each dataset might be available in different forms, these forms might represent different formats of the dataset, different endpoints,... Examples of Distribution include a downloadable CSV file, an XLS file representing the dataset, an RSS feed...&lt;/comment&gt;    &lt;/rdf:Description&gt; </pre>
<b>Alignment to INSPIRE</b>	

<b>Example</b>	"distribution": [{"accessURL": "http://data.mcc.gov/exemple_resource/data.json", "format": "JSON", "size": "22mb"}, {"accessURL": "http://data.mcc.gov/exemple_dat a.xml", "format": "XML", "size": "24mb"}]
----------------	--

## Mandatory Fields

### dcat:accessUrl

<b>Field</b>	<b>Access route</b>
<b>Cardinality</b>	(1,n)
<b>Required</b>	Mandatory if the file is publicly downloadable
<b>Acceptible values</b>	string, URL
<b>Usage notes</b>	<p>This field should provide access to a page showing how to access a downloadable resource</p> <pre>&lt;!-- Distribution - access URL --&gt; &lt;rdf:Description rdf:about="http://www.w3.org/ns/dcat#accessURL"&gt;   &lt;vann:usageNote xml:lang="en"&gt;Mandatory property. This property contains a URL that   gives access to a Distribution of the Dataset. The resource at the access URL may contain   information about how to get the Dataset. &lt;/vann:usageNote&gt;   &lt;dct:identifier xml:lang="en"&gt;dc:accessURL&lt;/dct:identifier&gt;   &lt;rdfs:label xml:lang="en"&gt;Distribution - access URL&lt;/rdfs:label&gt;   &lt;rdfs:isDefinedBy rdf:resource="http://www.w3.org/ns/dcat" /&gt;   &lt;rdfs:comment xml:lang="en"&gt;&lt;/rdfs:comment&gt; &lt;/rdf:Description&gt;</pre>
<b>Alignment to INSPIRE</b>	
<b>Example</b>	<pre>dc:accessURL rdf:datatype="http://www.w3.org/2001/XMLSchema#anyURI" https://data.some.org/the/actual/catalog/datasets/1/resources</pre>

### Example of the record for a distribution of a data set showing the mandatory fields

```
<?xml version="1.0" encoding="utf-8" ?>
```

```

<rdf:RDF
xmlns:dct="http://purl.org/dc/terms/"
xmlns:dc="http://purl.org/dc/elements/1.1/"
xmlns:dcat="http://www.w3.org/ns/dcat#"
xmlns:foaf="http://xmlns.com/foaf/0.1/"
xmlns:xsd="http://www.w3.org/2001/XMLSchema#"
xmlns:rdfs="http://www.w3.org/2000/01/rdf-schema#"
xmlns:rdf="http://www.w3.org/1999/02/22-rdf-syntax-ns#">
<dcat:Catalog rdf:about="https://catalogue.datalocale.fr/dataset/catalogue-datalocale">
  <dct:title>Catalogue de données publiques mutualisé de Gironde</dct:title>
<dcat:Dataset
rdf:about="http://catalogue.datalocale.fr/dataset/liste-equipements_sportifs-cg33">
<dct:title>Liste des équipements sportifs du Département de la Gironde</dct:title>
<dct:description>Ce jeu de données contient une liste d'équipement sportifs décrit par
leur nom, leur coordonnées postales et leur géolocalisation ainsi que par la liste des
activités sportives qui peuvent y être pratiquées</dct:description>
<dcat:distribution>
<dcat:accessURL
rdf:resource="http://catalogue.datalocale.fr/storage/f/2013-05-23T120224/LISTE_EQUIPEME
NTS_SPORTIFS_CG.csv"/>
</dcat:distribution>
  </dcat:dataset>
<dcat:catalogueRecord>
<foaf:primaryTopic
rdf:resource="http://catalogue.datalocale.fr/dataset/liste-equipements_sportifs-cg33"/>
<dct:modified>2012-01-15</dct:modified>
</dcat:catalogueRecord>
</dcat:catalog>

```

## Recommended Fields

### Catalog

These fields are not mandatory but are recommended so as to make searching for data sets easier when information in catalogues from different sources is aggregated within a portal.

#### foaf:homepage

Field	Home Page
Cardinality	(0,1)
Required	Recommended
Acceptible	foaf :Document

<b>values</b>	
<b>Usage notes</b>	<p>This field allows users to be directed to a home page provided by the producer of the data. This home page should ideally explain the role and activities of the data producer and allow the user to better understand the context in which the data is produced so that the user can use and query the data appropriately.</p> <pre>&lt;!-- Data Catalogue - homepage --&gt; &lt;rdf:Description rdf:about="http://xmlns.com/foaf/0.1/homepage"&gt;   &lt;vann:usageNote xml:lang="en"&gt;Recommended property. This property refers to a web page that acts as the main page for the Catalogue.&lt;/vann:usageNote&gt;   &lt;dct:identifier xml:lang="en"&gt;foaf:homepage&lt;/dct:identifier&gt;   &lt;rdfs:label xml:lang="en"&gt;Data Catalogue - homepage&lt;/rdfs:label&gt;   &lt;rdfs:isDefinedBy rdf:resource="http://xmlns.com/foaf/spec/#term_homepage" /&gt;   &lt;rdfs:comment xml:lang="en"&gt;&lt;/rdfs:comment&gt; &lt;/rdf:Description&gt;</pre>
<b>Alignment to INSPIRE</b>	Resource locator
<b>Example</b>	foaf:homepage <a href="http://catalogue.datalocale.fr/about">http://catalogue.datalocale.fr/about</a>

opquast BP: <http://checklists.opquast.com/fr/opendata/criteria/21001/>

The data producer provides its data publication and usage policy

### dct:language

Field	Language
<b>Cardinality</b>	(0,n)
<b>Required</b>	Recommended
<b>Acceptable values</b>	<p>dct:LinguisticSystem</p> <p>Here it is recommended to use 2 or 3 character codes provided in ISO 3166 [<a href="http://www.iso.org/iso/country_codes.htm">http://www.iso.org/iso/country_codes.htm</a>]</p>
<b>Usage notes</b>	<p>If the published catalogue of datasets is available in many languages then this field should be repeated for each of them</p> <pre>&lt;!-- Data Catalogue - language --&gt; &lt;rdf:Description rdf:about="http://purl.org/dc/terms/language"&gt;</pre>

	<pre> &lt;vann:usageNote xml:lang="en"&gt;Recommended property. This property refers to a language used in the textual metadata describing titles, descriptions, etc. of the Datasets in the Catalogue. This property can be repeated if the metadata is provided in multiple languages.&lt;/vann:usageNote&gt; &lt; dct:identifier xml:lang="en"&gt;dct:language&lt;/dct:identifier&gt; &lt; rdfs:label xml:lang="en"&gt;Data Catalogue - language&lt;/rdfs:label&gt; &lt; rdfs:isDefinedBy rdf:resource="http://dublincore.org/documents/dcmi-terms/#terms-language" /&gt; &lt; rdfs:comment xml:lang="en"&gt;&lt;/rdfs:comment&gt; &lt;/rdf:Description&gt; </pre>
<b>Alignment to INSPIRE</b>	Resource language
<b>Example</b>	dct:language fr

**opquast BP:** <https://checklists.opquast.com/fr/opendata/criteria/20945/>

Each dataset should be accompanied by an indicator of the language it is published in.

#### dct:licence

<b>Field</b>	<b>license</b>
<b>Cardinality</b>	(0,1)
<b>Required</b>	Recommended
<b>Acceptable values</b>	string or URL
<b>Usage notes</b>	<p>It is best to provide here a link to the license reference text specifying the conditions for reuse of the catalogue metadata. Note: this is not the place to clarify the conditions for using the information contained in the resources available, such as datasets, but it is for providing license information for the catalogue metadata</p> <pre> &lt;!-- Data Catalogue - licence --&gt; &lt;rdf:Description rdf:about="http://purl.org/dc/terms/license"&gt; &lt;vann:usageNote xml:lang="en"&gt;Recommended property. This property refers to the licence under which the Catalogue can be used or reused.&lt;/vann:usageNote&gt; &lt; dct:identifier xml:lang="en"&gt;dct:license&lt;/dct:identifier&gt; &lt; rdfs:label xml:lang="en"&gt;Data Catalogue - licence&lt;/rdfs:label&gt; &lt; rdfs:isDefinedBy rdf:resource="http://dublincore.org/documents/dcmi-terms/#terms-license" /&gt; &lt; rdfs:comment xml:lang="en"&gt;&lt;/rdfs:comment&gt; &lt;/rdf:Description&gt; </pre>

<b>Alignment to INSPIRE</b>	
<b>Example</b>	dct:licence Licence OdBL dct:licenceDocument <a href="http://data.lacub.fr/pdf/ODbL_fr.pdf">http://data.lacub.fr/pdf/ODbL_fr.pdf</a>

**opquast BP:** <http://checklists.opquast.com/fr/opendata/criteria/20962/>

The data sets are accompanied by a summary and a link to the full version of the license.

dct:issued

<b>Field</b>	<b>date of first publication</b>
<b>Cardinality</b>	(0,1)
<b>Required</b>	Recommended
<b>Acceptable values</b>	xsd:date Date (YYYY-MM-DD)
<b>Usage notes</b>	<pre> &lt;!-- Data Catalogue - release date --&gt; &lt;rdf:Description rdf:about="http://purl.org/dc/terms/issued"&gt;   &lt;vann:usageNote xml:lang="en"&gt;Recommended property. This property contains the date of formal issuance (e.g., publication) of the Catalogue.&lt;/vann:usageNote&gt;   &lt;dct:identifier xml:lang="en"&gt;dct:issued&lt;/dct:identifier&gt;   &lt;rdfs:label xml:lang="en"&gt;Data Catalogue - release date&lt;/rdfs:label&gt;   &lt;rdfs:isDefinedBy rdf:resource="http://dublincore.org/documents/dcmi-terms/#terms-issued" /&gt;   &lt;rdfs:comment xml:lang="en"&gt;&lt;/rdfs:comment&gt; &lt;/rdf:Description&gt; </pre>
<b>Alignment to INSPIRE</b>	Temporal reference / Date of publication
<b>Example</b>	dct:issued :2001-01-15

**opquast BP:** <http://checklists.opquast.com/fr/opendata/criteria/20942/>

Each dataset is accompanied by a creation date

dcat:themeTaxonomy

<b>Field</b>	<b>Controlled Vocabulary</b>
<b>Cardinality</b>	(0,n)

<b>Required</b>	Recommended
<b>Acceptable values</b>	string, or preferably a URL
<b>Usage notes</b>	<p>This field sets the controlled vocabulary from which the different categories used to describe the data sets come. Ideally this term is defined by a dereferencable URL that resolves to the vocabulary published in RDF, e.g. as a SKOS file.</p> <pre>&lt;!-- Data Catalogue - themes --&gt; &lt;rdf:Description rdf:about="http://www.w3.org/ns/dcat#themeTaxonomy"&gt;   &lt;vann:usageNote xml:lang="en"&gt;Recommended property. This property refers to a knowledge organization system (KOS) used to classify the Catalogue's Datasets.&lt;/vann:usageNote&gt;   &lt;dct:identifier xml:lang="en"&gt;dcat:themeTaxonomy&lt;/dct:identifier&gt;   &lt;rdfs:label xml:lang="en"&gt;Data Catalogue - themes&lt;/rdfs:label&gt;   &lt;rdfs:isDefinedBy rdf:resource="http://www.w3.org/ns/dcat" /&gt;   &lt;rdfs:comment xml:lang="en"&gt;The knowledge organization system (KOS) used to classify catalog's datasets&lt;/rdfs:comment&gt; &lt;/rdf:Description&gt;</pre>
<b>Alignment to INSPIRE</b>	
<b>Example</b>	dcat:themeTaxonomy :<http://eurovoc.europa.eu>

opquast BP: <http://checklists.opquast.com/fr/opendata/criteria/20937/>

Links are provided to the themes which are published as lists and controlled vocabularies

dct:modified

<b>Field</b>	<b>date updated</b>
<b>Cardinality</b>	(0,1)
<b>Required</b>	Recommended
<b>Acceptable values</b>	xsd:date Date (YYYY-MM-DD)
<b>Usage notes</b>	<p>Dates must conform to the specification in ISO 8601 YYYY-MM-DD. Use "01" for the date value if it is unknown.</p> <pre>&lt;!-- Data Catalogue - update/ modification date --&gt;</pre>



	<pre> &lt;rdf:Description rdf:about="http://purl.org/dc/terms/modified"&gt;   &lt;vann:usageNote xml:lang="en"&gt;Recommended property. This property contains the most recent date   on which the Catalogue was changed or modified.&lt;/vann:usageNote&gt;   &lt;dct:identifier xml:lang="en"&gt;dct:modified&lt;/dct:identifier&gt;   &lt;rdfs:label xml:lang="en"&gt;Data Catalogue - update/ modification date&lt;/rdfs:label&gt;   &lt;rdfs:isDefinedBy rdf:resource="http://dublincore.org/documents/dcmi-terms/#terms-modified" /&gt;   &lt;rdfs:comment xml:lang="en"&gt;&lt;/rdfs:comment&gt; &lt;/rdf:Description&gt; </pre>
<b>Alignment to INSPIRE</b>	Temporal reference / Date of last revision
<b>Example</b>	dct:modified 2012-01-15

**opquast BP:** <https://checklists.opquast.com/fr/opendata/criteria/20943/>

Each dataset is accompanied by the date of last update.

### Example catalogue description using mandatory and recommended fields

```

<?xml version="1.0" encoding="utf-8" ?>
<rdf:RDF
xmlns:dct="http://purl.org/dc/terms/"
xmlns:dc="http://purl.org/dc/elements/1.1/"
xmlns:dcat="http://www.w3.org/ns/dcat#"
xmlns:foaf="http://xmlns.com/foaf/0.1/"
xmlns:xsd="http://www.w3.org/2001/XMLSchema#"
xmlns:rdfs="http://www.w3.org/2000/01/rdf-schema#"
xmlns:rdf="http://www.w3.org/1999/02/22-rdf-syntax-ns#"
<dcat:Catalog rdf:about="https://catalogue.datalocale.fr/dataset/catalog">
  <dct:title>Catalogue de données publiques mutualisé de Gironde</dct:title>
  <dct:description>catalogue de données publiques du territoire Girondin permettant l'accès
centralisé aux ressources ouvertes (c'est-à-dire paratagées avec une licence permettant la
libre ré-utilisation des données conformément aux termes de la licence choisie) publiées de
manière distribuées par les collectivités et les citoyens girondins.
</dct:description>
<dct:publisher>
  <foaf:Organization>
    <foaf:homepage rdf:resource="http://www.gironde.fr"/>
    <dct:title xml:lang="ca">Département de la Gironde</dct:title>
  </foaf:Organization>
</dct:publisher>
<dct:issued rdf:datatype="http://www.w3.org/2001/XMLSchema#dateTime">2013-04-26T00:00:00Z
</dct:issued>
<dct:modified rdf:datatype="http://www.w3.org/2001/XMLSchema#dateTime">2013-05-22T09:38:45Z
</dct:modified>
  <dc:language>fr</dc:language>
  <foaf:homepage rdf:resource="https://catalogue.datalocale.fr/about"/>
  <dct:license rdf:resource="http://opendatacommons.org/licenses/odbl/1.0/">

```

```

    <dct:licenceDocument>http://data.lacub.fr/pdf/ODbL_fr.pdf</dct:licenceDocument>
  </dct:license>
  <dcat:themeTaxonomy rdf:about="http://eurovoc.europa.eu"/>
    <dcat:dataset>
  <dcat:Dataset rdf:about="https://data.some.org/catalog/datasets/1">
    </dcat:dataset>
  </dcat:catalog>

```

## Catalog record

The use of these fields is not mandatory but is recommended to facilitate the retrieval of catalogue descriptive information when searching through collections of catalogues from different sources

### dct:issued

Field	Date of first publication
Cardinality	(0,1)
Required	Recommended
Acceptible values	Date (YYYY-MM-DD)
Usage notes	<p>xsd:date This field allows you to give the date that the dataset was added to the catalogue</p> <pre> &lt;!-- Catalogue Record - listing date --&gt; &lt;rdf:Description rdf:about="http://purl.org/dc/terms/issued"&gt;   &lt;vann:usageNote xml:lang="en"&gt;Recommended property. This property contains the date on which the description of the Dataset was included in the Catalogue.&lt;/vann:usageNote&gt;   &lt;dct:identifier xml:lang="en"&gt;dct:issued&lt;/dct:identifier&gt;   &lt;rdfs:label xml:lang="en"&gt;Catalogue Record - listing date&lt;/rdfs:label&gt;   &lt;rdfs:isDefinedBy rdf:resource="http://dublincore.org/documents/dcmi-terms/#terms-issued" /&gt;   &lt;rdfs:comment xml:lang="en"&gt;&lt;/rdfs:comment&gt; &lt;/rdf:Description&gt; </pre>
Alignment to INSPIRE	Temporal reference / Date of publication
Example	dct:issued :2001-01-15

opquast BP: <http://checklists.opquast.com/fr/opendata/criteria/20942/>

Each datasets is accompanied by a creation date

### adms:status

Field	type of revision made to the status of the data set
Cardinality	(0,1)
Required	Recommended
Acceptible values	created, updated,deleted
Usage notes	<p>This field should help to show the status of the data set in the catalog following its last revision</p> <pre>&lt;!-- Catalogue Record - change type --&gt; &lt;rdf:Description rdf:about="http://www.w3.org/ns/adms#status"&gt;   &lt;vann:usageNote xml:lang="en"&gt;Recommended property. The type of the latest revision of a Dataset's entry in the Catalogue. It MUST take one of the values :created, :updated or :deleted depending on whether this latest revision is a result of a creation, update or deletion.&lt;/vann:usageNote&gt;   &lt; dct:identifier xml:lang="en"&gt;adms:status&lt;/dct:identifier&gt;   &lt; rdfs:label xml:lang="en"&gt;Catalogue Record - change type&lt;/rdfs:label&gt;   &lt; rdfs:isDefinedBy rdf:resource="http://www.w3.org/TR/vocab-adms" /&gt;   &lt; rdfs:comment xml:lang="en"&gt;&lt;/rdfs:comment&gt; &lt;/rdf:Description&gt;</pre>
Alignment to INSPIRE	
Example	adms:status :deleted

opquast BP: <http://checklists.opquast.com/fr/opendata/criteria/20972/>

It is possible to get information showing the level of confidence to give to the data

### Example of the catalogue revision history showing mandatory and recommended fields

```
<?xml version="1.0" encoding="utf-8" ?>
<rdf:RDF
```

```

xmlns:dct="http://purl.org/dc/terms/"
xmlns:dc="http://purl.org/dc/elements/1.1/"
xmlns:dcat="http://www.w3.org/ns/dcat#"
xmlns:foaf="http://xmlns.com/foaf/0.1/"
xmlns:xsd="http://www.w3.org/2001/XMLSchema#"
xmlns:rdfs="http://www.w3.org/2000/01/rdf-schema#"
xmlns:rdf="http://www.w3.org/1999/02/22-rdf-syntax-ns#"
<dcat:Catalog rdf:about="https://catalogue.datalocale.fr/dataset/catalog">
  <dct:title>Catalogue de données publiques mutualisé de Gironde</dct:title>
  <dcat:dataset>
<dcat:Dataset rdf:about="https://data.some.org/catalog/datasets/1">
  </dcat:dataset>
<dcat:catalogueRecord>
<foaf:primaryTopic rdf:resource="http://catalogue.datalocale.fr/dataset/bro_gestion-forestiere"/>
<dct:modified>2012-01-15</dct:modified>
<dct:issued>2001-01-15</dct:issued>
<adms:status>updated</adms:status>
</dcat:catalogueRecord>
</dcat:catalog>

```

## Dataset

These fields are not mandatory but are recommended so as to make searching for datasets easier when information in catalogues from different sources is aggregated within a portal.

### adms:contactPoint

Field	Contact details of the datasets maintainer
Cardinality	(0,n)
Required	strongly Recommended
Acceptible values	vcard:Kind string, email
Usage notes	Name in the form: Surname, Given name. Might also be contact point within an organisation e.g. central enquiry unity  <!-- Dataset - contact point --> <rdf:Description rdf:about="http://www.w3.org/ns/adms#contactPoint"> <vann:usageNote xml:lang="en">Recommended property. This property contains contact information that can be used for flagging errors in the Dataset or sending

	<pre> comments&lt;/vann:usageNote&gt; &lt; dct:identifier xml:lang="en"&gt;adms:contactPoint&lt;/dct:identifier&gt; &lt; rdfs:label xml:lang="en"&gt;Dataset - contact point&lt;/rdfs:label&gt; &lt; rdfs:isDefinedBy rdf:resource="http://www.w3.org/TR/vocab-adms" /&gt; &lt; rdfs:comment xml:lang="en"&gt;&lt;/rdfs:comment&gt; &lt;/rdf:Description&gt; </pre>
Alignment to INSPIRE	Metadata point of contact
Example	adms:contactPoint : Cartelo, Denis

opquast BP: <https://checklists.opquast.com/fr/opendata/criteria/20959/>

Datasets are accompanied by some means of contacting the author or maintainer

### dcat:distribution

Field	available distributions
Cardinality	(0,n)
Required	strongly Recommended
Acceptible values	string, URL
Usage notes	<p>This field connects a dataset description to its available distribution(s). It is strongly recommended that you provide URLs here.</p> <pre> &lt;!-- Dataset - dataset distribution --&gt; &lt; rdf:Description rdf:about="http://www.w3.org/ns/dcat#distribution"&gt; &lt; vann:usageNote xml:lang="en"&gt;Recommended property. This property links the Dataset a to an available Distribution.&lt;/vann:usageNote&gt; &lt; dct:identifier xml:lang="en"&gt;dcat:distribution&lt;/dct:identifier&gt; &lt; rdfs:label xml:lang="en"&gt;Dataset - dataset distribution&lt;/rdfs:label&gt; &lt; rdfs:isDefinedBy rdf:resource="http://www.w3.org/ns/dcat" /&gt; &lt; rdfs:comment xml:lang="en"&gt;&lt;/rdfs:comment&gt; &lt;/rdf:Description&gt; </pre>
Alignment to INSPIRE	The DCAT-AP notion of distribution

	<p>The specification of the W3C Data Catalog vocabulary (<a href="#">Section 5.4</a>) defines a distribution as follows:  Represents a specific available form of a dataset. Each dataset might be available in different forms, these forms might represent different formats of the dataset or different endpoints. Examples of distributions include a downloadable CSV file, an API or an RSS feed.</p> <p>INSPIRE metadata do not include a specific element for distributions (element “resource locator” can point to either a distribution or documentation of a dataset/series). This does not pose conformity issues with DCAT-AP, since distribution metadata are recommended, but not mandatory.</p> <p>However, in the DCAT-AP logic, a number of INSPIRE metadata elements should be related to the distribution(s) of a dataset, and not to the dataset itself (e.g., elements “conditions for access and use”, “limitations on public access”, “encoding” and “character encoding”).</p> <p>Since in the INSPIRE metadata on datasets and dataset series there is no direct link to the corresponding distributions, this poses a mapping issue, especially when multiple alternatives are specified.</p> <p>It is important to note that, based on the DCAT definition of distribution, any INSPIRE service giving access to data might be modelled as a distribution. However, this solution is controversial, and it requires further investigation.</p> <p>When used to describe a spatial data service (an access to a resource described by a dataset) the OnlineResource element could be used and mapped to the dcat:accessURL one</p>
Example	<pre> dcat:Dataset ;   dcat:distribution [ a dcat:Distribution ;     cnt:characterEncoding "UTF-8"^^xsd:string ] .  :dataset/001/webservice   a dcat:Distribution ;   dct:title "SOAP Web Service to access data of the pollution levels in..." ;   dcat:accessURL &lt;http://geohub.jrc.ec.europa.eu/efas_cc?service=WMS&amp;request=GetCapabilities&gt; ;   dct:format [ </pre>

	<pre> a dct:IMT ; rdf:value "application/ogc+xml" ; rdfs:label "OGC WMS Web Service" . ];  dcat:Distribution dct:identifier http://data.some.org/catalog/datasets/1/distribution/1 </pre>
--	---

opquast BP: <http://checklists.opquast.com/fr/.opendata/criteria/20956/>

The record contains a direct link to the data's URL

### dcat:keyword

Field	keyword
Cardinality	(0,n)
Required	Recommended
Acceptible values	rdfs:Literal string
Usage notes	<p>Keywords separated by commas . This freeform indexing complements the categorisation of datasets through the use of a controlled vocabulary. It adds a more subjective part to the description of the data set .</p> <pre> &lt;!-- Dataset - keyword/ tag --&gt; &lt;rdf:Description rdf:about="http://www.w3.org/ns/dcat#keyword"&gt;   &lt;vann:usageNote xml:lang="en"&gt;Recommended property. This property contains a keyword or tag describing the Dataset.&lt;/vann:usageNote&gt;   &lt;dct:identifier xml:lang="en"&gt;dcat:keyword&lt;/dct:identifier&gt;   &lt;rdfs:label xml:lang="en"&gt;Dataset - keyword/ tag&lt;/rdfs:label&gt;   &lt;rdfs:isDefinedBy rdf:resource="http://www.w3.org/ns/dcat" /&gt;   &lt;rdfs:comment xml:lang="en"&gt;&lt;/rdfs:comment&gt; &lt;/rdf:Description&gt; </pre>
Alignment to INSPIRE	Keyword

Example	keyword : tennis, gymnastics, swimming
---------	--

opquast BP: <http://checklists.opquast.com/fr/opendata/criteria/20936/>

The data are categorised

### dct:publisher

Field	Publisher
Cardinality	(0,1)
Required	strongly Recommended
Acceptible values	foaf:agent string. URL
Usage notes	<p>This element refers to the organization or entity responsible for publishing data set</p> <pre>&lt;!-- Dataset - publisher --&gt; &lt;rdf:Description rdf:about="http://purl.org/dc/terms/publisher"&gt;   &lt;vann:usageNote xml:lang="en"&gt;Recommended property.   This property refers to an entity (organisation) responsible for   making the Dataset available.&lt;/vann:usageNote&gt;   &lt;dct:identifier xml:lang="en"&gt;dct:publisher&lt;/dct:identifier&gt;   &lt;rdfs:label xml:lang="en"&gt;Dataset - publisher&lt;/rdfs:label&gt;   &lt;rdfs:isDefinedBy   rdf:resource="http://dublincore.org/documents/dcmi-terms/#terms-publisher" /&gt;   &lt;rdfs:comment xml:lang="en"&gt;&lt;/rdfs:comment&gt; &lt;/rdf:Description&gt;</pre>
Alignment to INSPIRE	Responsible organisation / Publisher
Example	foaf:agent Technical Services Branch of the town of Libourne

opquast BP: <http://checklists.opquast.com/fr/opendata/criteria/20959/>

The datasets are accompanied by at least one means of contact with the producer (or maintainer )

### dcat:theme



Field	Controlled Vocabulary
Cardinality	(0,n)
Required	Recommandé
Acceptible values	skos:Concept If possible use the theme of the URL
Usage notes	<p>This field is used to specify the theme used to categorise the dataset using the controlled vocabulary defined in the catalogue properties . Ideally this term is defined by a dereferencable URL which resolves to a SKOS file.</p> <pre>&lt;!-- Dataset - theme/ category --&gt; &lt;rdf:Description rdf:about="http://www.w3.org/ns/dcat#theme"&gt;   &lt;vann:usageNote xml:lang="en"&gt;Recommended property. This property refers to a category of the Dataset. A Dataset may be associated with multiple themes. Subproperty of dct:subject&lt;/vann:usageNote&gt;   &lt;dct:identifier xml:lang="en"&gt;dcat:theme&lt;/dct:identifier&gt;   &lt;rdfs:label xml:lang="en"&gt;Dataset - theme/ category&lt;/rdfs:label&gt;   &lt;rdfs:isDefinedBy rdf:resource="http://www.w3.org/ns/dcat" /&gt;   &lt;rdfs:comment xml:lang="en"&gt;&lt;/rdfs:comment&gt; &lt;/rdf:Description&gt;</pre>
Alignment to INSPIRE	Keyword
Example	dcat:theme <a href="http://eurovoc.europa.eu/229173">http://eurovoc.europa.eu/229173</a>

opquast BP: <http://checklists.opquast.com/fr/opendata/criteria/20937/>

The themes are linked to published authority lists and taxonomies

### Example of a dataset record with mandatory and recommended fields

```
<?xml version="1.0" encoding="utf-8" ?>
<rdf:RDF
xmlns:dct="http://purl.org/dc/terms/"
xmlns:dc="http://purl.org/dc/elements/1.1/"
xmlns:dcat="http://www.w3.org/ns/dcat#"
xmlns:foaf="http://xmlns.com/foaf/0.1/"
xmlns:xsd="http://www.w3.org/2001/XMLSchema#"
xmlns:rdfs="http://www.w3.org/2000/01/rdf-schema#"
xmlns:rdf="http://www.w3.org/1999/02/22-rdf-syntax-ns#">
```

```

<dcat:Catalog rdf:about="https://catalogue.datalocale.fr/dataset/catalogue-datalocale">
  <dct:title>Catalogue de données publiques mutualisé de Gironde</dct:title>
<dcat:Dataset rdf:about="http://catalogue.datalocale.fr/dataset/liste-equipements_sportifs-cg33">
<dct:title>Liste des équipements sportifs du Département de la Gironde</dct:title>
<dct:description>Ce jeu de données contient une liste d'équipement sportifs décrit par leur nom, leur coordonnées
postales et leur géolocalisation ainsi que par la liste des activités sportives qui peuvent y être
pratiquées</dct:description>
<adms:contactPoint>Cartelo, Denis</adms:contactPoint>
<dcat:Distribution>
<dct:identifiant rdf:resource="https://data.some.org/catalog/datasets/1/distribution/1"/>
</dcat:Distribution>
<dct:keyword>tennis,gymnase, piscine</dct:keyword>
<dct:publisher>
<foaf:agent rdf:about="http://catalogue.datalocale.fr/group/dgaj-dsa">Direction des sports et de la vie associative du
Département de la Gironde</foaf:agent>
</dct:publisher>
<dcat:theme rdf:resource="http://eurovoc.europa.eu/229173"/>
  </dcat:dataset>
<dcat:catalogueRecord>
<foaf:primaryTopic rdf:resource="http://catalogue.datalocale.fr/dataset/liste-equipements_sportifs-cg33"/>
<dct:modified>2012-01-15</dct:modified>
<dct:issued>2001-01-15</dct:issued>
<adms:status>updated</adms:status>
<dct:description>mise à jour de la couverture géographique du jeu de données</dct:description>
<dct:title>mise à jour des métadonnées</dct:title>
</dcat:catalogueRecord>
</dcat:catalog>

```

## Distribution

These fields are not mandatory but are recommended so as to make using the descriptive information in catalogues easier when datasets from different sources are aggregated within a portal.

### dct:description

Field	description
Cardinality	(1,n)
Required	Recommended
Acceptible values	rdf:PlainLiteral string

Usage notes	<p>This field contains human-readable information</p> <pre>&lt;!-- Distribution - description --&gt; &lt;rdf:Description rdf:about="http://purl.org/dc/terms/description"&gt;   &lt;vann:usageNote xml:lang="en"&gt;Recommended property. This   property contains a free-text account of the Distribution. This   property can be repeated for parallel language versions of the   description.&lt;/vann:usageNote&gt;   &lt;dct:identifier xml:lang="en"&gt;dct:description&lt;/dct:identifier&gt;   &lt;rdfs:label xml:lang="en"&gt;Distribution - description&lt;/rdfs:label&gt;   &lt;rdfs:isDefinedBy   rdf:resource="http://dublincore.org/documents/dcmi-terms/#terms   -description" /&gt;   &lt;rdfs:comment xml:lang="en"&gt;&lt;/rdfs:comment&gt; &lt;/rdf:Description&gt;</pre>
Alignment to INSPIRE	Resource abstract
Example	description: This resource is an export in csv format encoded in UTF-8 and containing geo-coordinates in WGS 84 form

### dc:mediaType

Field	Format/Media Type
Cardinality	(0,n)
Required	Recommended if the data is publicly downloadable
Acceptable values	dct:MediaTypeOrExtent string
Usage notes	<p>This field must describe the file accessible at the accessURL and give its extension (for example., CSV, XLS, XSLX, TSV, JSON, XML).</p> <p>For example, if the downloadable resource is a zip file containing a csv file, the value of this field is "zip"</p> <pre>&lt;!-- Distribution - media type --&gt; &lt;rdf:Description rdf:about="http://purl.org/dc/terms/mediaType"&gt;   &lt;vann:usageNote xml:lang="en"&gt;Optional property. This</pre>

	<p>property refers to the media type of the Distribution if this is defined in IANA.&lt;/vann:usageNote&gt;</p> <pre>&lt;dct:identifier xml:lang="en"&gt;dcat:mediaType, subproperty of dct:format&lt;/dct:identifier&gt; &lt;rdfs:label xml:lang="en"&gt;Distribution - media type&lt;/rdfs:label&gt; &lt;rdfs:isDefinedBy rdf:resource="http://dublincore.org/documents/dcmi-terms/#terms- mediaType" /&gt; &lt;rdfs:comment xml:lang="en"&gt;&lt;/rdfs:comment&gt; &lt;/rdf:Description&gt;</pre>
Alignment to INSPIRE	Encoding
Example	dct:format text/csv

opquast BP: <http://checklists.opquast.com/fr/opendata/criteria/20951/>

The file format of downloadable files is given

#### dct:licence

Field	License
Cardinality	(0,1)
Required	Recommended
Acceptible values	string or URL
Usage notes	<p>It is best to provide a link to the reference text specifying the conditions for reuse of the catalog metadata. Note: this is to specify the conditions for re-using the information contained in the resources available .</p> <pre>&lt;!-- Distribution - licence --&gt; &lt;rdf:Description rdf:about="http://purl.org/dc/terms/license"&gt;   &lt;vann:usageNote xml:lang="en"&gt;Recommended property. This property refers to the licence under which the Distribution is made available.&lt;/vann:usageNote&gt;   &lt;dct:identifier xml:lang="en"&gt;dct:licence&lt;/dct:identifier&gt;   &lt;rdfs:label xml:lang="en"&gt;Distribution - licence&lt;/rdfs:label&gt;   &lt;rdfs:isDefinedBy rdf:resource="http://dublincore.org/documents/dcmi-terms/#terms- license" /&gt;</pre>

	<rdfs:comment xml:lang="en"></rdfs:comment> </rdf:Description>
Alignment to INSPIRE	Limitations on public access
Example	dct:licence <a href="http://data.lacub.fr/pdf/ODbL_fr.pdf">http://data.lacub.fr/pdf/ODbL_fr.pdf</a>

opquast BP: <http://checklists.opquast.com/fr/opendata/criteria/20962/>

The data sets are accompanied by a summary and a link to the full version of the license

### Example of the record for a downloadable distribution of a dataset using mandatory and recommended fields

```
<?xml version="1.0" encoding="utf-8" ?>
<rdf:RDF
  xmlns:dct="http://purl.org/dc/terms/"
  xmlns:dc="http://purl.org/dc/elements/1.1/"
  xmlns:dcat="http://www.w3.org/ns/dcat#"
  xmlns:foaf="http://xmlns.com/foaf/0.1/"
  xmlns:xsd="http://www.w3.org/2001/XMLSchema#"
  xmlns:rdfs="http://www.w3.org/2000/01/rdf-schema#"
  xmlns:rdf="http://www.w3.org/1999/02/22-rdf-syntax-ns#">
  <dcat:Catalog rdf:about="https://catalogue.datalocale.fr/dataset/catalogue-datalocale">
    <dct:title>Catalogue de données publiques mutualisé de Gironde</dct:title>
    <dcat:Dataset rdf:about="http://catalogue.datalocale.fr/dataset/liste-equipements_sportifs-cg33">
      <dct:title>Liste des équipements sportifs du Département de la Gironde</dct:title>
      <dct:description>Ce jeu de données contient une liste d'équipement sportifs décrit par leur nom, leur coordonnées postales et leur géolocalisation ainsi que par la liste des activités sportives qui peuvent y être pratiquées</dct:description>
      <dcat:distribution>
        <dcat:accessURL
          rdf:resource="http://catalogue.datalocale.fr/storage/f/2013-05-23T120224/LISTE_EQUIPEMENTS_SPORTIFS_CG.csv"/>
        <dct:description>Cette ressource est un export au format csv encodé en UTF-8 et contenant des coordonnées géolocalisées en WGS 84</dct:description>
        <dct:format>text/csv</dct:format>
        <dct:licence rdf:about="http://data.lacub.fr/pdf/ODbL_fr.pdf"/>
      </dcat:distribution>
    </dcat:dataset>
  </dcat:catalogueRecord>
  <foaf:primaryTopic rdf:resource="http://catalogue.datalocale.fr/dataset/liste-equipements_sportifs-cg33"/>
  <dct:modified>2012-01-15</dct:modified>
</dcat:catalogueRecord>
</dcat:catalog>
```

## Optional Fields

These fields are optional and allow improved semantic precision for the description of the information in the catalogue.

## Catalogue

### dcat:record

Field	Revisions
<b>Cardinality</b>	(0,n)
<b>Required</b>	Optional
<b>Acceptible values</b>	string
<b>Usage notes</b>	<p>This field provides scope for recording the history of changes made to the datasets</p> <pre>&lt;!-- Data Catalogue - record --&gt; &lt;rdf:Description rdf:about="http://www.w3.org/ns/dcat#record"&gt;   &lt;vann:usageNote xml:lang="en"&gt;Optional property. This property refers to a Catalogue Record that is part of the Catalogue&lt;/vann:usageNote&gt;   &lt;dct:identifier xml:lang="en"&gt;dcat:record&lt;/dct:identifier&gt;   &lt;rdfs:label xml:lang="en"&gt;Data Catalogue - record&lt;/rdfs:label&gt;   &lt;rdfs:isDefinedBy rdf:resource="http://www.w3.org/ns/dcat" /&gt;   &lt;rdfs:comment xml:lang="en"&gt;This property refers to a Catalogue Record that is part of the Catalogue&lt;/rdfs:comment&gt; &lt;/rdf:Description&gt;</pre>
<b>Alignment to INSPIRE</b>	
<b>Example</b>	<p>dcat:record  <a href="http://catalogue.datalocale.fr/revision/986bcf02-dece-42ae-a6dc-19f9f589a624">http://catalogue.datalocale.fr/revision/986bcf02-dece-42ae-a6dc-19f9f589a624</a></p> <pre>:record/001 a dcat:CatalogRecord ; foaf:primaryTopic :dataset/001 ; dct:issued "2011-12-11"^^xsd:date ; dct:modified "2012-02-01"^^xsd:date ;</pre>

opquast BP: <http://checklists.opquast.com/fr/opendata/criteria/20953/>

Each dataset is documented with a change log.

## dct:rights

<b>Field</b>	<b>Rights</b>
<b>Cardinality</b>	(0,1)
<b>Required</b>	Optional
<b>Acceptable values</b>	dct :RightsStatement string
<b>Usage notes</b>	<p>This field is for indicating the conditions under which the catalogue (not the datasets it describes) can be used</p> <pre>&lt;!-- Data Catalogue - rights --&gt; &lt;rdf:Description rdf:about="http://purl.org/dc/terms/rights"&gt;   &lt;vann:usageNote xml:lang="en"&gt;Optional property. This property refers to a statement that specifies rights associated with the Catalogue.&lt;/vann:usageNote&gt;   &lt;dct:identifier xml:lang="en"&gt;dct:rights&lt;/dct:identifier&gt;   &lt;rdfs:label xml:lang="en"&gt;Data Catalogue - rights&lt;/rdfs:label&gt;   &lt;rdfs:isDefinedBy rdf:resource="http://dublincore.org/documents/dcmi-terms/#terms-rights" /&gt;   &lt;rdfs:comment xml:lang="en"&gt;This property refers to a statement that specifies rights associated with the Catalogue.&lt;/rdfs:comment&gt; &lt;/rdf:Description&gt;</pre>
<b>Alignment to INSPIRE</b>	Conditions for access and use
<b>Example</b>	dct:rights Les éléments de description de ce catalogue sont librement ré-utilisables conformément aux conditions de la licence ODBL

**opquast BP:** <http://checklists.opquast.com/fr/opendata/criteria/20963/>

The license mentions requirements from the originator on reuse, redistribution and marketing

## dct:spatial

<b>Field</b>	Geographical Coverage
<b>Cardinality</b>	(0,n)
<b>Required</b>	Optional. Allows a search by geographic coverage and allows interoperability with the INSPIRE standard description

<b>Acceptible values</b>	See the usage notes
<b>Usage notes</b>	<p>This field can contain one of the following:</p> <p>(1) a “bounding box” provided by a set of boundary coordinates represented by pairs of longitude / latitude values where the coordinates are specified in decimal degrees in the following order : minimum longitude, minimum latitude, maximum longitude, maximum latitude;</p> <p>(2) a pair of latitude / longitude values (in decimal degrees) representing a point for which the data set is relevant</p> <p>(3) a geographic profile expressed as encapsulated text in XML tags;</p> <p>(4) a geographical identifier published from the <a href="#">GeoNames</a> database.</p> <pre>&lt;!-- Data Catalogue - spatial / geographic --&gt; &lt;rdf:Description rdf:about="http://purl.org/dc/terms/spatial"&gt;   &lt;vann:usageNote xml:lang="en"&gt;Optional property. This property refers to a geographical area covered by the Catalogue.&lt;/vann:usageNote&gt;   &lt; dct:identifier xml:lang="en"&gt;dct:spatial&lt;/dct:identifier&gt;   &lt; rdfs:label xml:lang="en"&gt;Data Catalogue - spatial / geographic&lt;/rdfs:label&gt;   &lt; rdfs:isDefinedBy rdf:resource="http://dublincore.org/documents/dcmi-terms/#terms-spatial" /&gt;   &lt; rdfs:comment xml:lang="en"&gt;This property refers to a geographical area covered by the Catalogue.&lt;/rdfs:comment&gt; &lt;/rdf:Description&gt;</pre>
<b>Alignment to INSPIRE</b>	Geographic bounding box
<b>Example</b>	<pre>dct:spatial : Gironde,France dct:spatial : {"type":"Polygon","coordinates":[[ [-1.26156091294416, 45.5731138630698], [0.315055728326286, 45.5731138630698], [0.315055728326286, 44.1940166710363], [-1.26156091294416, 44.1940166710363], [-1.26156091294416, 45.5731138630698] ] ]}  [ a dct:Location ; locn:geometry "&lt;gml:Envelope srsName="http://www.opengis.net/def/EPSG/0/4326"&gt;&lt;gml:lowerCo rner&gt;-10.58 34.56&lt;/gml:lowerCorner&gt;&lt;gml:upperCorner&gt;34.59 70.09&lt;/gml:upperCorner&gt;&lt;/gml:Envelope&gt;"^^ogc:GMLLiteral ]</pre>

opquast BP: <http://checklists.opquast.com/fr/opendata/criteria/20946/>

If the data set corresponds to a defined geographical area , it is possible to know the location



## Example of a catalogue description using mandatory, recommended and optional fields

```
<?xml version="1.0" encoding="utf-8" ?>
<rdf:RDF
  xmlns:dct="http://purl.org/dc/terms/"
  xmlns:dc="http://purl.org/dc/elements/1.1/"
  xmlns:dcat="http://www.w3.org/ns/dcat#"
  xmlns:foaf="http://xmlns.com/foaf/0.1/"
  xmlns:xsd="http://www.w3.org/2001/XMLSchema#"
  xmlns:rdfs="http://www.w3.org/2000/01/rdf-schema#"
  xmlns:rdf="http://www.w3.org/1999/02/22-rdf-syntax-ns#">
<dcat:Catalog rdf:about="https://catalogue.datalocale.fr/dataset/catalog">
  <dct:title>Catalogue de données publiques mutualisé de Gironde</dct:title>
  <dct:description>catalogue de données publiques du territoire Girondin permettant l'accès
centralisé aux ressources ouvertes (c'est-à-dire paratagées avec une licence permettant la
libre ré-utilisation des données conformément aux termes de la licence choisie) publiées de
manière distribuées par les collectivités et les citoyens girondins.
</dct:description>
<dct:publisher>
  <foaf:Organization>
    <foaf:homepage rdf:resource="http://www.gironde.fr"/>
    <dct:title xml:lang="ca">Département de la Gironde</dct:title>
  </foaf:Organization>
</dct:publisher>
<dct:issued rdf:datatype="http://www.w3.org/2001/XMLSchema#dateTime">2013-04-26T00:00:00Z
</dct:issued>
<dct:modified rdf:datatype="http://www.w3.org/2001/XMLSchema#dateTime">2013-05-22T09:38:45Z
</dct:modified>
  <dc:language>fr</dc:language>
  <foaf:homepage rdf:resource="https://catalogue.datalocale.fr/about"/>
  <dct:license rdf:resource="http://opendatacommons.org/licenses/odbl/1.0/">
    <dct:licenceDocument>http://data.lacub.fr/pdf/ODbL_fr.pdf</dct:licenceDocument>
</dct:license>
<dct:rights> Les éléments de description de ce catalogue sont librement ré-utilisables
conformément aux conditions de la licence ODBL</dct:rights>
<dcat:record>
<rdf:resource="http://catalogue.datalocale.fr/revision/986bcf02-dece-42ae-a6dc-19f9f589a624/">
</dcat:record>
<dct:spatial>Gironde,France</dct:spatial>
<dct:spatial>
<rdf:resource="http://data.ign.fr/id/geofla/departement/33"/></dct:spatial>
<dct:spatial>{"type":"Polygon","coordinates":[[[-1.26156091294416, 45.5731138630698],
[0.315055728326286, 45.5731138630698], [0.315055728326286, 44.1940166710363],
[-1.26156091294416, 44.1940166710363], [-1.26156091294416, 45.5731138630698] ]
]}</dct:spatial>
<dcat:themeTaxonomy><rdf:about="http://eurovoc.europa.eu"/>
  <dcat:dataset>
<dcat:Dataset rdf:about="https://data.some.org/catalog/datasets/1">
  </dcat:dataset>
```

```
</dcat:catalog>
```

## Catalogue record

These fields are optional and allow improved semantic precision for the description of the information in the catalogue revision history.

### dct:description

Field	Description of the changes made
Cardinality	(0,n)
Required	Optional
Acceptable values	string
Usage notes	<p>rdf:PlainLiteral a description of the changes made to the data set.</p> <pre>&lt;!-- Catalogue Record - description --&gt; &lt;rdf:Description rdf:about="http://purl.org/dc/terms/description"&gt;   &lt;vann:usageNote xml:lang="en"&gt;Optional property. This property contains a free-text account of the record. This property can be repeated for parallel language versions of the description.&lt;/vann:usageNote&gt;   &lt;dct:identifier xml:lang="en"&gt;dct:description&lt;/dct:identifier&gt;   &lt;rdfs:label xml:lang="en"&gt;Catalogue Record - description&lt;/rdfs:label&gt;   &lt;rdfs:isDefinedBy rdf:resource="http://dublincore.org/documents/dcmi-terms/#terms-description" /&gt;   &lt;rdfs:comment xml:lang="en"&gt;&lt;/rdfs:comment&gt; &lt;/rdf:Description&gt;</pre>
Alignment to INSPIRE	Resource abstract
Example	dct:description: updating the geographical coverage of the dataset

### dct:title

Field	title of the changes made
-------	---------------------------

<b>Cardinality</b>	(0,n)
<b>Required</b>	Optional
<b>Acceptable values</b>	string
<b>Usage notes</b>	<p>rdf:PlainLiteral the title of the modifications to the data set.</p> <pre> &lt;!-- Catalogue Record - title --&gt; &lt;rdf:Description rdf:about="http://purl.org/dc/terms/title"&gt;   &lt;vann:usageNote xml:lang="en"&gt;Optional property. This property contains a name given to the   Catalogue. This property can be repeated for parallel language versions of the name.&lt;/vann:usageNote&gt;   &lt; dct:identifier xml:lang="en"&gt;dct:title&lt;/dct:identifier&gt;   &lt; rdfs:label xml:lang="en"&gt;Catalogue Record - title&lt;/rdfs:label&gt;   &lt; rdfs:isDefinedBy rdf:resource="http://dublincore.org/documents/dcmi-terms/#terms-title" /&gt;   &lt; rdfs:comment xml:lang="en"&gt;&lt;/rdfs:comment&gt; &lt;/rdf:Description&gt; </pre>
<b>Alignment to INSPIRE</b>	Resource abstract
<b>Example</b>	dct:title: updating metadata

### Example of the catalogue revision history showing mandatory, recommended and optional fields

```

<?xml version="1.0" encoding="utf-8" ?>
<rdf:RDF
xmlns:dct="http://purl.org/dc/terms/"
xmlns:dc="http://purl.org/dc/elements/1.1/"
xmlns:dcat="http://www.w3.org/ns/dcat#"
xmlns:foaf="http://xmlns.com/foaf/0.1/"
xmlns:xsd="http://www.w3.org/2001/XMLSchema#"
xmlns:rdfs="http://www.w3.org/2000/01/rdf-schema#"
xmlns:rdf="http://www.w3.org/1999/02/22-rdf-syntax-ns#">
<dcat:Catalog rdf:about="https://catalogue.datalocale.fr/dataset/catalog">
  <dct:title>Catalogue de données publiques mutualisé de Gironde</dct:title>
  <dcat:dataset>
<dcat:Dataset rdf:about="https://data.some.org/catalog/datasets/1">
  </dcat:dataset>
<dcat:catalogueRecord>
<foaf:primaryTopic
rdf:resource="http://catalogue.datalocale.fr/dataset/bro_gestion-forestiere"/>
<dct:modified>2012-01-15</dct:modified>
<dct:issued>2001-01-15</dct:issued>

```

```

<adms:status>updated</adms:status>
<dct:description>mise à jour de la couverture géographique du jeu de
données</dct:description>
<dct:title>mise à jour des métadonnées</dct:title>
</dcat:catalogueRecord>
</dcat:catalog>

```

## Dataset

These fields are optional and allow improved semantic precision for the description of the information in the dataset.

### dct:conformsTo

Field	Specification or rules for structure
Cardinality	(0,n)
Required	Optional
Acceptible values	dct:Standard string or URL
Usage notes	<p>This field is used to give a link to a specification or implementation rule defining the structure of the data within the data set</p> <pre> &lt;!-- Dataset - conforms to --&gt; &lt;rdf:Description rdf:about="http://purl.org/dc/terms/conformsTo"&gt;   &lt;vann:usageNote xml:lang="en"&gt;Optional property. This property refers to an implementing rule or other specification.&lt;/vann:usageNote&gt;   &lt;dct:identifier xml:lang="en"&gt;dct:conformsTo&lt;/dct:identifier&gt;   &lt;rdfs:label xml:lang="en"&gt;Dataset - conforms to&lt;/rdfs:label&gt;   &lt;rdfs:isDefinedBy rdf:resource="http://dublincore.org/documents/dcmi-terms/#terms-conformsTo" /&gt;   &lt;rdfs:comment xml:lang="en"&gt;&lt;/rdfs:comment&gt; &lt;/rdf:Description&gt; </pre>
Alignment to INSPIRE	Conformity / Conformant
Example	dct:conformsTo : <a href="http://www.insee.fr/fr/methodes/default.asp?page=sources/ope-adm-bpe.htm">http://www.insee.fr/fr/methodes/default.asp?page=sources/ope-adm-bpe.htm</a>

### dct:accrualPeriodicity

<b>Field</b>	<b>Update frequency</b>
<b>Cardinality</b>	(0,1)
<b>Required</b>	Optional
<b>Acceptable values</b>	In the description it is preferable to choose from a set of controlled values e.g. never , irregular , annual, semi-annual , quarterly, monthly , daily , etc.
<b>Usage notes</b>	<p>This field allows the specification of the update frequency for the information contained in the data set and therefore perhaps also a possible expiration date for the information or an indicator that it is requiring to be updated.</p> <pre> &lt;!-- Dataset - frequency --&gt; &lt;rdf:Description rdf:about="http://purl.org/dc/terms/acrualPeriodicity"&gt;   &lt;vann:usageNote xml:lang="en"&gt;Optional property. This property refers to the frequency at which Dataset is updated.&lt;/vann:usageNote&gt;   &lt;dct:identifier xml:lang="en"&gt;dct:accrualPeriodicity&lt;/dct:identifier&gt;   &lt;rdfs:label xml:lang="en"&gt;Dataset - frequency&lt;/rdfs:label&gt;   &lt;rdfs:isDefinedBy rdf:resource="http://dublincore.org/documents/dcmi-terms/#terms-acrualPeriodicity" /&gt;   &lt;rdfs:comment xml:lang="en"&gt;&lt;/rdfs:comment&gt; &lt;/rdf:Description&gt; </pre>
<b>Alignment to INSPIRE</b>	
<b>Example</b>	dct:accrualPeriodicity: mensuel

opquast BP: <http://checklists.opquast.com/fr/.opendata/criteria/20976/>

Each dataset is accompanied by an update frequency

#### dct:identifier

<b>Field</b>	<b>identifier</b>
<b>Cardinality</b>	(0,n)
<b>Required</b>	Optional
<b>Acceptable values</b>	rdfs :Literal

	string, URI or URL
<b>Usage notes</b>	<p>This field allows third-party services to maintain a consistent record of data set references even though their title or description labels might change .</p> <p>Producers can use this field to incorporate an identifier generated by the source management system, assign a random but unique ID or use a system that allocates unique persistent identifiers at the time of publication. This identifier must contain only alphanumeric characters without spaces or accented characters.</p> <pre> &lt;!-- Dataset - identifier --&gt; &lt;rdf:Description rdf:about="http://purl.org/dc/terms/identifier"&gt;   &lt;vann:usageNote xml:lang="en"&gt;Optional property. This property contains the main   identifier for the Dataset, e.g. the URI or other unique identifier in the context of the   Catalogue.&lt;/vann:usageNote&gt;   &lt;dct:identifier xml:lang="en"&gt;dct:identifier&lt;/dct:identifier&gt;   &lt;rdfs:label xml:lang="en"&gt;Dataset - identifier&lt;/rdfs:label&gt;   &lt;rdfs:isDefinedBy   rdf:resource="http://dublincore.org/documents/dcmi-terms/#terms-identifier" /&gt;   &lt;rdfs:comment xml:lang="en"&gt;&lt;/rdfs:comment&gt; &lt;/rdf:Description&gt; </pre>
<b>Alignment to INSPIRE</b>	Unique resource identifier
<b>Example</b>	dct:identifier:urn:uuid:64dcd93a-4f9d-42a5-816e-44be3fbe0a03

**opquast BP:** <http://checklists.opquast.com/fr/opendata/criteria/20955/>

Each dataset is accompanied by a unique identifier

### dc:landingPage

Field	Landing Page / Home Page
<b>Cardinality</b>	(0,1)
<b>Required</b>	Optional
<b>Acceptible values</b>	foaf :Document URL
<b>Usage notes</b>	This field allows users to specify a web address to access not only the data set but also possibly associated facilities and

	<p>additional information.</p> <p>This field also allows users to be directed to a home page explaining the duties/responsibilities of the data producer so that they better understand the ownership and the context of data production. This may assist users in querying and using the information.</p> <pre>&lt;!-- Dataset - landing page --&gt; &lt;rdf:Description rdf:about="http://www.w3.org/ns/dcat#landingPage"&gt;   &lt;vann:usageNote xml:lang="en"&gt;Optional property. This property refers to a web page that provides access to the Dataset, its Distributions and/or additional information. &lt;/vann:usageNote&gt; &lt; dct:identifier xml:lang="en"&gt;dcat:landingPage&lt;/dct:identifier&gt; &lt; rdfs:label xml:lang="en"&gt;Dataset - landing page&lt;/rdfs:label&gt; &lt; rdfs:isDefinedBy rdf:resource="http://www.w3.org/ns/dcat" /&gt; &lt; rdfs:comment xml:lang="en"&gt;&lt;/rdfs:comment&gt; &lt;/rdf:Description&gt;</pre>
<b>Alignment to INSPIRE</b>	Resource locator
<b>Example</b>	dcat:landingPage: <a href="http://www.gironde.fr/equipements/EquipementsSportifs.html">http://www.gironde.fr/equipements/EquipementsSportifs.html</a>

**opquast BP:** <http://checklists.opquast.com/fr/opendata/criteria/20918/>

The datasets are accompanied by links to supporting resources

### dct:language

<b>Field</b>	<b>language</b>
<b>Cardinality</b>	(0,n)
<b>Required</b>	Optional
<b>Acceptible values</b>	string
<b>Usage notes</b>	Prefer the use of 2 or 3 character language codes rather than the use of the language name as this may support automated translation
<b>Alignment to INSPIRE</b>	Metadata language

<b>Example</b>	dct:language : Fr
----------------	-------------------

opquast BP: <https://checklists.opquast.com/fr/opendata/criteria/20945/>

Each dataset is accompanied by a reference to the language

#### dct:issued

<b>Field</b>	<b>date of first publication</b>
<b>Cardinality</b>	(0,1)
<b>Required</b>	Optional
<b>Acceptible values</b>	xsd :date Date (YYYY-MM-DD)
<b>Usage notes</b>	<pre>&lt;!-- Dataset - release date --&gt; &lt;rdf:Description rdf:about="http://purl.org/dc/terms/issued"&gt;   &lt;vann:usageNote xml:lang="en"&gt;Optional property. This property contains the date of   formal issuance (e.g., publication) of the Dataset.&lt;/vann:usageNote&gt;   &lt;dct:identifier xml:lang="en"&gt;dct:issued&lt;/dct:identifier&gt;   &lt;rdfs:label xml:lang="en"&gt;Dataset - release date&lt;/rdfs:label&gt;   &lt;rdfs:isDefinedBy   rdf:resource="http://dublincore.org/documents/dcmi-terms/#terms-issued" /&gt;   &lt;rdfs:comment xml:lang="en"&gt;&lt;/rdfs:comment&gt; &lt;/rdf:Description&gt;</pre>
<b>Alignment to INSPIRE</b>	Temporal reference / Date of publication
<b>Example</b>	dct:issued :2001-01-15

opquast BP: <http://checklists.opquast.com/fr/opendata/criteria/20942/>

Each dataset is accompanied by a creation date

#### dct:spatial

<b>Field</b>	<b>Spatial coverage</b>
<b>Cardinality</b>	(0,1)
<b>Required</b>	Optional, but it allows for search by geographical coverage and allows interoperability with the standard INSPIRE description
<b>Acceptible values</b>	dct :location voir les notes pour l'utilisation



<b>Usage notes</b>	<p>This field contains data in one of the following forms:</p> <ul style="list-style-type: none"> <li>(1) a bounding box represented by pairs of longitude / latitude coordinates where the values are specified in decimal degrees in the following order : minimum longitude, minimum latitude, maximum longitude, maximum latitude;</li> <li>(2) a pair of latitude / longitude coordinates (in decimal degrees) representing the point for which the data set is relevant.</li> <li>(3) a geographic profile expressed as XML</li> <li>(4) a geographic identifier issued by the <a href="#">GeoNames</a> database.</li> </ul> <pre>&lt;!-- Dataset - spatial/ geographical coverage --&gt; &lt;rdf:Description rdf:about="http://purl.org/dc/terms/spatial"&gt;   &lt;vann:usageNote xml:lang="en"&gt;Optional property. This property refers to a geographic region that is covered by the Dataset. &lt;/vann:usageNote&gt;   &lt;dct:identifier xml:lang="en"&gt;dct:spatial&lt;/dct:identifier&gt;   &lt;rdfs:label xml:lang="en"&gt;Dataset - spatial/ geographical coverage&lt;/rdfs:label&gt;   &lt;rdfs:isDefinedBy rdf:resource="http://dublincore.org/documents/dcmi-terms/#terms-spatial" /&gt;   &lt;rdfs:comment xml:lang="en"&gt;&lt;/rdfs:comment&gt; &lt;/rdf:Description&gt;</pre>
<b>Alignment to INSPIRE</b>	Geographic bounding box
<b>Example</b>	<pre>dct:spatial : Gironde,France dct:spatial : {"type":"Polygon","coordinates":[ [ [-1.26156091294416, 45.5731138630698], [0.315055728326286, 45.5731138630698], [0.315055728326286, 44.1940166710363], [-1.26156091294416, 44.1940166710363], [-1.26156091294416, 45.5731138630698] ] ]}</pre>

**dct:temporal**

<b>Field</b>	<b>Temporal coverage</b>
<b>Cardinality</b>	(0,1)
<b>Required</b>	Optional, but good practice to include if available
<b>Acceptible values</b>	<pre>xsd:dateTime</pre> <p>This element can be refined by the property <code>PeriodOfTime</code> as defined by <a href="http://purl.org/dc/terms/PeriodOfTime">http://purl.org/dc/terms/PeriodOfTime</a></p> <p>An interval of time that is named or defined by its start and end</p>

	dates.
<b>Usage notes</b>	<p>This property refers to a temporal period that the Dataset covers.</p> <p>This field provides the relevant time frame from a starting date-time to an ending date-time.</p> <pre>&lt;!-- Dataset - temporal coverage --&gt; &lt;rdf:Description rdf:about="http://purl.org/dc/terms/temporal"&gt;   &lt;vann:usageNote xml:lang="en"&gt;Optional property. This property refers to a temporal period that the Dataset covers.&lt;/vann:usageNote&gt;   &lt;dct:identifier xml:lang="en"&gt;dct:temporal&lt;/dct:identifier&gt;   &lt;rdfs:label xml:lang="en"&gt;Dataset - temporal coverage&lt;/rdfs:label&gt;   &lt;rdfs:isDefinedBy rdf:resource="http://dublincore.org/documents/dcmi-terms/#terms-temporal" /&gt;   &lt;rdfs:comment xml:lang="en"&gt;&lt;/rdfs:comment&gt; &lt;/rdf:Description&gt;</pre>
<b>Alignment to INSPIRE</b>	Temporal reference / temporal extent
<b>Example</b>	<pre>dct:temporal [   a dct:PeriodOfTime, time:Interval;   time:hasBeginning [     a time:Instant;     time:inXSDDateTime     "2011-01-01T00:00:00-05:00"^^xsd:dateTime.   ];   time:hasEnd [     a time:Instant;     time:inXSDDateTime     "2011-12-31T23:59:59-05:00"^^xsd:dateTime.   ]. ];  dct:temporal : 2000-01-15 00:45:00,2010-01-15 00:06:00</pre>

**dct:modified**

Field	Date modified
<b>Cardinality</b>	(0,1)
<b>Required</b>	Optional, but good practice to include if available

<b>Acceptable values</b>	xsd:date Date (YYYY-MM-DD)
<b>Usage notes</b>	Dates must conform to ISO 8601 YYYY-MM-DD. Use "01" when the date is unknown  <pre>&lt;!-- Dataset - update/ modification date --&gt; &lt;rdf:Description rdf:about="http://purl.org/dc/terms/modified"&gt;   &lt;vann:usageNote xml:lang="en"&gt;Optional property. This property contains the most recent   date on which the Dataset was changed or modified.&lt;/vann:usageNote&gt;   &lt;dct:identifier xml:lang="en"&gt;dct:modified&lt;/dct:identifier&gt;   &lt;rdfs:label xml:lang="en"&gt;Dataset - update/ modification date&lt;/rdfs:label&gt;   &lt;rdfs:isDefinedBy   rdf:resource="http://dublincore.org/documents/dcmi-terms/#terms-modified" /&gt;   &lt;rdfs:comment xml:lang="en"&gt;&lt;/rdfs:comment&gt; &lt;/rdf:Description&gt;</pre>
<b>Alignment to INSPIRE</b>	Temporal reference / date of publication
<b>Example</b>	dct:modified 2012-01-15

## adms:version

<b>Field</b>	<b>Version of the dataset</b>
<b>Cardinality</b>	(0,1)
<b>Required</b>	Optional
<b>Acceptable values</b>	integer or string
<b>Usage notes</b>	This field is used to track changes in the structure of the dataset or major updates  <pre>&lt;!-- Dataset - version --&gt; &lt;rdf:Description rdf:about="http://www.w3.org/ns/adms#version"&gt;   &lt;vann:usageNote xml:lang="en"&gt;Optional property. This property contains a version number   or other version designation of the Dataset.&lt;/vann:usageNote&gt;   &lt;dct:identifier xml:lang="en"&gt;adms:version&lt;/dct:identifier&gt;   &lt;rdfs:label xml:lang="en"&gt;Dataset - version&lt;/rdfs:label&gt;   &lt;rdfs:isDefinedBy rdf:resource="http://www.w3.org/TR/vocab-adms" /&gt;   &lt;rdfs:comment xml:lang="en"&gt;&lt;/rdfs:comment&gt; &lt;/rdf:Description&gt;</pre>
<b>Alignment to INSPIRE</b>	

<b>Example</b>	adms:version 2013
----------------	-------------------

**opquast BP:** <http://checklists.opquast.com/fr/opendata/criteria/20953/>

Each dataset must be documented with a changelog

adms:versionNotes

Field	Description of version changes
<b>Cardinality</b>	(0,1)
<b>Required</b>	Optional, but good practice to include if available
<b>Acceptible values</b>	string
<b>Usage notes</b>	<p>This field is used to describe the changes that were made to the data set which meant that it is defined as a new version.</p> <pre>&lt;!-- Dataset - version notes --&gt; &lt;rdf:Description rdf:about="http://www.w3.org/ns/adms#versionNotes"&gt;   &lt;vann:usageNote xml:lang="en"&gt;Optional property. This property contains a description of the differences between this version and a previous version of the Dataset.&lt;/vann:usageNote&gt;   &lt;dct:identifier xml:lang="en"&gt;adms:versionNotes&lt;/dct:identifier&gt;   &lt;rdfs:label xml:lang="en"&gt;Dataset - version notes&lt;/rdfs:label&gt;   &lt;rdfs:isDefinedBy rdf:resource="http://www.w3.org/TR/vocab-adms" /&gt;   &lt;rdfs:comment xml:lang="en"&gt;&lt;/rdfs:comment&gt; &lt;/rdf:Description&gt;</pre>
<b>Alignment to INSPIRE</b>	
<b>Example</b>	adms:versionNotes Added 2 columns to indicate the geographical coordinates of the equipment concerned .

### Example of the description of a dataset using mandatory, recommended and optional fields

```
<?xml version="1.0" encoding="utf-8" ?>
<rdf:RDF
xmlns:dct="http://purl.org/dc/terms/"
xmlns:dc="http://purl.org/dc/elements/1.1/"
xmlns:dcat="http://www.w3.org/ns/dcat#"
xmlns:foaf="http://xmlns.com/foaf/0.1/"
xmlns:xsd="http://www.w3.org/2001/XMLSchema#
```

```

xmlns:rdfs="http://www.w3.org/2000/01/rdf-schema#"
xmlns:rdf="http://www.w3.org/1999/02/22-rdf-syntax-ns#"
<dcatalog:Catalog rdf:about="https://catalogue.datalocale.fr/dataset/catalogue-datalocale">
  <dcatalog:title>Catalogue de données publiques mutualisé de Gironde</dcatalog:title>
<dcatalog:Dataset
rdf:about="http://catalogue.datalocale.fr/dataset/liste-equipements_sportifs-cg33">
  <dcatalog:title>Liste des équipements sportifs du Département de la Gironde</dcatalog:title>
  <dcatalog:description>Ce jeu de données contient une liste d'équipement sportifs décrit par
leur nom, leur coordonnées postales et leur géolocalisation ainsi que par la liste des
activités sportives qui peuvent y être pratiquées</dcatalog:description>
  <adms:contactPoint>Cartelo, Denis</adms:contactPoint>
  <dcatalog:Distribution>
  <dcatalog:identifiant
rdf:resource="https://data.some.org/catalog/datasets/1/distribution/1"/>
  </dcatalog:Distribution>
  <dcatalog:keyword>tennis,gymnase, piscine</dcatalog:keyword>
  <dcatalog:publisher>
  <foaf:agent rdf:about="http://catalogue.datalocale.fr/group/dgaj-dsa">Direction des
sports et de la vie associative du Département de la Gironde</foaf:agent>
  </dcatalog:publisher>
  <dcatalog:theme rdf:resource="http://eurovoc.europa.eu/100149"/>
  <dcatalog:identifiant rdf:resource="urn:uuid:64dcd93a-4f9d-42a5-816e-44be3fbe0a03">
  <dcatalog:conformsTo
rdf:about="http://www.insee.fr/fr/methodes/default.asp?page=sources/ope-adm-bpe.htm"/>
  <dcatalog:accrualPeriodicity>mensuel</dcatalog:accrualPeriodicity>
  <dcatalog:landingPage>http://www.gironde.fr/equipements/EquipementsSportifs.html<dcatalog!landi
ngPage>
  <dcatalog:language>Fr</dcatalog:language>
  <dcatalog:issued><2001-01-15</dcatalog:issued>
  <dcatalog:spatial>Gironde,France</dcatalog:spatial>
  <dcatalog:spatial>{"type":"Polygon","coordinates":[[ [-1.26156091294416, 45.5731138630698],
[0.315055728326286, 45.5731138630698], [0.315055728326286, 44.1940166710363],
[-1.26156091294416, 44.1940166710363], [-1.26156091294416, 45.5731138630698] ]
]}</dcatalog:spatial>
  <dcatalog:temporal>2000-01-15 00:45:00,2010-01-15 00:06:00</dcatalog:temporal>
  <dcatalog:modified>2012-01-15</dcatalog:modified>
  <adms:version>2013</adms:version>
  <adms:versionNotes>Ajout de 2 colonnes permettant de préciser les coordonnées
géographiques des équipements concernés.</adms:versionNotes>
  </dcatalog:dataset>
<dcatalog:catalogueRecord>
  <foaf:primaryTopic
rdf:resource="http://catalogue.datalocale.fr/dataset/liste-equipements_sportifs-cg33"/>
  <dcatalog:modified>2012-01-15</dcatalog:modified>
  <dcatalog:issued>2001-01-15</dcatalog:issued>
  <adms:status>updated</adms:status>
  <dcatalog:description>mise à jour de la couverture géographique du jeu de
données</dcatalog:description>

```

```
<dct:title>mise à jour des métadonnées<dct:title>
</dcat:catalogueRecord>
</dcat:catalog>
```

## Distribution

These fields are optional and allow improved semantic precision for the description of the information about the distributions of the dataset.

### dcat:byteSize

<b>Field</b>	<b>size</b>
<b>Cardinality</b>	(0,1)
<b>Required</b>	Optional
<b>Acceptable values</b>	see usage notes
<b>Usage notes</b>	<p>the file sizes must be in the form 52kB, 140MB, 2GB etc.</p> <pre>&lt;!-- Distribution - byte size --&gt; &lt;rdf:Description rdf:about="http://www.w3.org/ns/dcat#byteSize"&gt;   &lt;vann:usageNote xml:lang="en"&gt;Optional property. This property contains the size of a Distribution in bytes.&lt;/vann:usageNote&gt;   &lt;dct:identifier xml:lang="en"&gt;dcat:byteSize&lt;/dct:identifier&gt;   &lt;rdfs:label xml:lang="en"&gt;Distribution - byte size&lt;/rdfs:label&gt;   &lt;rdfs:isDefinedBy rdf:resource="http://www.w3.org/ns/dcat" /&gt;   &lt;rdfs:comment xml:lang="en"&gt;&lt;/rdfs:comment&gt; &lt;/rdf:Description&gt;</pre>
<b>Alignment to INSPIRE</b>	
<b>Example</b>	dcat:byteSize : 3MB

### dcat:downloadUrl

<b>Field</b>	<b>Download URL</b>
<b>Cardinality</b>	(0,n)
<b>Required</b>	Optional if the file is publicly available for download.

<b>Acceptable values</b>	string or URL
<b>Usage notes</b>	<p>This link gives access to a page showing how to download the distribution of the dataset</p> <pre>&lt;!-- Distribution - download URL --&gt; &lt;rdf:Description rdf:about="http://www.w3.org/ns/dcat#downloadURL"&gt;   &lt;vann:usageNote xml:lang="en"&gt;Optional property. This property contains a URL that is   direct link to a downloadable file in a given format.&lt;/vann:usageNote&gt;   &lt;dct:identifier xml:lang="en"&gt;dcat:downloadURL&lt;/dct:identifier&gt;   &lt;rdfs:label xml:lang="en"&gt;Distribution - download URL&lt;/rdfs:label&gt;   &lt;rdfs:isDefinedBy rdf:resource="http://www.w3.org/ns/dcat" /&gt;   &lt;rdfs:comment xml:lang="en"&gt;&lt;/rdfs:comment&gt; &lt;/rdf:Description&gt;</pre>
<b>Alignment to INSPIRE</b>	
<b>Example</b>	<pre>dcat:downloadURL rdf:datatype="http://www.w3.org/2001/XMLSchema#anyURI" https://data.some.org/the/actual/catalog/datasets/1/resources/fic hier.csv</pre>

**dct:title**

<b>Field</b>	<b>title of the resource</b>
<b>Cardinality</b>	(0,n)
<b>Required</b>	Optional
<b>Acceptable values</b>	rdf:plainLiteral string
<b>Usage notes</b>	<p>An explicit title for the linked file</p> <pre>&lt;!-- Distribution - title --&gt; &lt;rdf:Description rdf:about="http://purl.org/dc/terms/title"&gt;   &lt;vann:usageNote xml:lang="en"&gt;Optional property. This property contains a name given to   the Distribution. This property can be repeated for parallel language versions of the   description.&lt;/vann:usageNote&gt;   &lt;dct:identifier xml:lang="en"&gt;dct:title&lt;/dct:identifier&gt;   &lt;rdfs:label xml:lang="en"&gt;Distribution - title&lt;/rdfs:label&gt;   &lt;rdfs:isDefinedBy   rdf:resource="http://dublincore.org/documents/dcmi-terms/#terms-title" /&gt;</pre>

	<code>&lt;rdfs:comment xml:lang="en"&gt;&lt;/rdfs:comment&gt; &lt;/rdf:Description&gt;</code>
<b>Alignment to INSPIRE</b>	Resource title
<b>Example</b>	<code>dct:titre: export en csv</code>

**dct:issued**

<b>Field</b>	<b>Date of first publication of the resource</b>
<b>Cardinality</b>	(0,1)
<b>Required</b>	Optionnal
<b>Acceptible values</b>	xsd:date Date (YYYY-MM-DD)
<b>Usage notes</b>	<code>&lt;!-- Distribution - release date --&gt; &lt;rdf:Description rdf:about="http://purl.org/dc/terms/issued"&gt; &lt;vann:usageNote xml:lang="en"&gt;Optional property. This property contains the date of formal issuance (e.g., publication) of the Distribution.&lt;/vann:usageNote&gt; &lt;dct:identifier xml:lang="en"&gt;dct:issued&lt;/dct:identifier&gt; &lt;rdfs:label xml:lang="en"&gt;Distribution - release date&lt;/rdfs:label&gt; &lt;rdfs:isDefinedBy rdf:resource="http://dublincore.org/documents/dcmi-terms/#terms-issued" /&gt; &lt;rdfs:comment xml:lang="en"&gt;&lt;/rdfs:comment&gt; &lt;/rdf:Description&gt;</code>
<b>Alignment to INSPIRE</b>	Temporal reference / Date of publication
<b>Example</b>	<code>dct:issued :2001-01-15</code>

opquast BP: <http://checklists.opquast.com/fr/opendata/criteria/20942/>

Each dataset is accompanied by a creation date

**dct:rights**

<b>Field</b>	<b>rights/authorisations</b>
<b>Cardinality</b>	(0,1)



<b>Required</b>	non
<b>Acceptable values</b>	dct:RightsStatement string
<b>Usage notes</b>	<p>This field indicates the conditions under which the data might be used</p> <pre>&lt;!-- Distribution - rights --&gt; &lt;rdf:Description rdf:about="http://purl.org/dc/terms/rights"&gt;   &lt;vann:usageNote xml:lang="en"&gt;Optional property. This property refers to a statement that specifies rights associated with the Distribution.&lt;/vann:usageNote&gt;   &lt;dct:identifier xml:lang="en"&gt;dct:rights&lt;/dct:identifier&gt;   &lt;rdfs:label xml:lang="en"&gt;Distribution - rights&lt;/rdfs:label&gt;   &lt;rdfs:isDefinedBy rdf:resource="http://dublincore.org/documents/dcmi-terms/#terms-rights" /&gt;   &lt;rdfs:comment xml:lang="en"&gt;&lt;/rdfs:comment&gt; &lt;/rdf:Description&gt;</pre>
<b>Alignment to INSPIRE</b>	Conditions for access and use
<b>Example</b>	dct:rights The elements in this file are freely re-usable under the terms of the ODBL license

**opquast BP:****dct:mediaType**

<b>Field</b>	<b>Format</b>
<b>Cardinality</b>	(0,n)
<b>Required</b>	Optional if the file is publicly downloadable
<b>Acceptable values</b>	dct:MediatypeOrExtent A file format or physical medium
<b>Usage notes</b>	<p>This field should describe the type of file provided preferably using a controlled vocabulary.</p> <pre>&lt;!-- Distribution - media type --&gt; &lt;rdf:Description rdf:about="http://purl.org/dc/terms/mediaType"&gt;   &lt;vann:usageNote xml:lang="en"&gt;Optional property. This property refers to the media type of the Distribution if this is defined in IANA.&lt;/vann:usageNote&gt;   &lt;dct:identifier xml:lang="en"&gt;dcat:mediaType, subproperty of dct:format&lt;/dct:identifier&gt;   &lt;rdfs:label xml:lang="en"&gt;Distribution - media type&lt;/rdfs:label&gt;</pre>

	<pre>&lt;rdfs:isDefinedBy rdf:resource="http://dublincore.org/documents/dcmi-terms/#terms-mediaType" /&gt; &lt;rdfs:comment xml:lang="en"&gt;&lt;/rdfs:comment&gt; &lt;/rdf:Description&gt;</pre>
<b>Alignment to INSPIRE</b>	Encoding
<b>Example</b>	dct:mediaType text/csv

opquast BP: <http://checklists.opquast.com/fr/opendata/criteria/20951/>

The format of the downloadable file is given

### adms:status

Field	Resource status
<b>Cardinality</b>	(0,1)
<b>Required</b>	Optional
<b>Acceptable values</b>	string
<b>Usage notes</b>	<p>This field must describe the status of the resource</p> <pre>&lt;!-- Distribution - status --&gt; &lt;rdf:Description rdf:about="http://www.w3.org/ns/adms#status"&gt;   &lt;vann:usageNote xml:lang="en"&gt;Optional property. This property refers to the maturity of the   Distribution&lt;/vann:usageNote&gt;   &lt;dct:identifier xml:lang="en"&gt;adms:status&lt;/dct:identifier&gt;   &lt;rdfs:label xml:lang="en"&gt;Distribution - status&lt;/rdfs:label&gt;   &lt;rdfs:isDefinedBy rdf:resource="http://www.w3.org/TR/vocab-adms" /&gt;   &lt;rdfs:comment xml:lang="en"&gt;&lt;/rdfs:comment&gt; &lt;/rdf:Description&gt;</pre>
<b>Alignment to INSPIRE</b>	
<b>Example</b>	dct:status current database enrichment

opquast BP: <http://checklists.opquast.com/fr/opendata/criteria/20971/>

If a data set contains errors , uncertainties or is incomplete, the information should be provided

Example of the record for a downloadable distribution of a dataset using mandatory, recommended and optional fields

```

<?xml version="1.0" encoding="utf-8" ?>
<rdf:RDF
xmlns:dct="http://purl.org/dc/terms/"
  xmlns:dc="http://purl.org/dc/elements/1.1/"
  xmlns:dcat="http://www.w3.org/ns/dcat#"
  xmlns:foaf="http://xmlns.com/foaf/0.1/"
  xmlns:xsd="http://www.w3.org/2001/XMLSchema#"
  xmlns:rdfs="http://www.w3.org/2000/01/rdf-schema#"
  xmlns:rdf="http://www.w3.org/1999/02/22-rdf-syntax-ns#">
<dcat:Catalog rdf:about="https://catalogue.datalocale.fr/dataset/catalogue-datalocale">
  <dct:title>Catalogue de données publiques mutualisé de Gironde</dct:title>
<dcat:Dataset
rdf:about="http://catalogue.datalocale.fr/dataset/liste-equipements_sportifs-cg33">
<dct:title>Liste des équipements sportifs du Département de la Gironde</dct:title>
<dct:description>Ce jeu de données contient une liste d'équipement sportifs décrit par
leur nom, leur coordonnées postales et leur géolocalisation ainsi que par la liste des
activités sportives qui peuvent y être pratiquées</dct:description>
<dcat:distribution>
<dcat:accessURL
rdf:resource="http://catalogue.datalocale.fr/dataset/liste-equipements_sportifs-cg33/re
source/c23ce03c-2ee6-46ef-a4a7-3f23c589577d"/>
<dct:description>Cette ressource est un export au format csv encodé en UTF-8 et
contenant des coordonnées géolocalisées en WGS 84</dct:description>
<dct:format>text/csv</dct:format>
<dct:licence rdf:about="http://data.lacub.fr/pdf/ODbL_fr.pdf"/>
<dcat:byteSize>3MB</dcat:byteSize>
<dcat:downloadURL rdf:resource="
https://data.some.org/the/actual/catalog/datasets/1/resources/fichier.csv"/>
<dct:title>export en csv</dct:title>
<dct:issued>2001-01-15</dct:issued>
<dct:rights>Les éléments contenu dans ce fichier sont librement ré-utilisables
conformément aux conditions de la licence ODBL</dct:rights>
<dcat:mediaType>text/csv</dcat:mediaType>
<dct:status>base de données en cours d'enrichissement</dct:status>
</dcat:distribution>
  </dcat:dataset>
<dcat:catalogueRecord>
<foaf:primaryTopic
rdf:resource="http://catalogue.datalocale.fr/dataset/liste-equipements_sportifs-cg33"/>
<dct:modified>2012-01-15</dct:modified>
</dcat:catalogueRecord>
</dcat:catalog>

```

## Management of Provenance

The question of the origin of the data (provenance) and its life cycle is a challenge in itself that cannot be addressed by simply adding a descriptor. W3C work clearly refer to the use of a dedicated pattern to express clearly the links between the published entities, agents involved in the life cycle of the data and the activities they have carried on these resources .

In the DCAT scheme it is proposed to use the dct descriptor “dct:from” to cover traceability requirements. In [[INSPIRE-DC](#)], the proposed mapping is dc:description. However, an equivalent property, namely, dct:description, is used in [[DCAT](#), [DCAT-AP](#)] for what in INSPIRE corresponds to the resource abstract element. Since the range of dct:provenance is not a literal, but class dct:ProvenanceStatement, the free-text content of element “lineage” can be expressed by using rdfs:label, as illustrated in

```
ex:myResource dct:terms:title "Luxor Obelisk"
               dct:terms:provenance [ rdfs:label "Originally located at the entrance to the Luxor temple
the obelisk came to Paris in 1836 as a gift by Muhammad Ali Pasha." ] .[DC-WIKI-PM].
RDF representation of element “lineage” (datasets and series only)
# Resource metadata
```

```
[] a dcat:Dataset ;
   dct:provenance [ a dct:ProvenanceStatement ;
                   rdfs:label "Forest Map 2006 is derived from the IMAGE2006 (SPOT/LISS scenes) and
CORINE2006 landcover dataset. In addition, MODIS composites are used for the Forest type
classification."@en ] .
```

## Annexe 1 : Example of a complete metadata record in RDF/XML

### Example of a catalogue record using mandatory, recommended and optional fields

```
<?xml version="1.0" encoding="utf-8" ?>
<rdf:RDF
xmlns:dct="http://purl.org/dc/terms/"
xmlns:dc="http://purl.org/dc/elements/1.1/"
xmlns:dcat="http://www.w3.org/ns/dcat#"
xmlns:foaf="http://xmlns.com/foaf/0.1/"
xmlns:xsd="http://www.w3.org/2001/XMLSchema#"
xmlns:rdfs="http://www.w3.org/2000/01/rdf-schema#"
xmlns:rdf="http://www.w3.org/1999/02/22-rdf-syntax-ns#">
<dcat:Catalog rdf:about="https://catalogue.data.gouv.fr/dataset/catalog">
  <dct:title>Catalogue de données publiques mutualisé de Gironde</dct:title>
  <dct:description>catalogue de données publiques du territoire Girondin permettant l'accès
centralisé aux ressources ouvertes (c'est-à-dire paratagées avec une licence permettant la
```

libre ré-utilisation des données conformément aux termes de la licence choisie) publiées de manière distribuées par les collectivités et les citoyens girondins.

```

</dct:description>
<dct:publisher>
  <foaf:Organization>
    <foaf:homepage rdf:resource="http://www.gironde.fr"/>
    <dct:title xml:lang="ca">Département de la Gironde</dct:title>
  </foaf:Organization>
</dct:publisher>
<dct:issued rdf:datatype="http://www.w3.org/2001/XMLSchema#dateTime">2013-04-26T00:00:00Z
</dct:issued>
<dct:modified rdf:datatype="http://www.w3.org/2001/XMLSchema#dateTime">2013-05-22T09:38:45Z
</dct:modified>
  <dc:language>fr</dc:language>
  <foaf:homepage rdf:resource="https://catalogue.datalocale.fr/about"/>
  <dct:license rdf:resource="http://opendatacommons.org/licenses/odbl/1.0/">
    <dct:licenceDocument>http://data.lacub.fr/pdf/ODbL_fr.pdf</dct:licenceDocument>
  </dct:license>
<dct:rights> Les éléments de description de ce catalogue sont librement ré-utilisables
conformément aux conditions de la licence ODBL</dct:rights>
<dcat:record>
<rdf:resource="http://catalogue.datalocale.fr/revision/986bcf02-dece-42ae-a6dc-19f9f589a624/">
</dcat:record>
<dct:spatial>Gironde,France</dct:spatial>
<dct:spatial>
<rdf:resource="http://data.ign.fr/id/geofla/departement/33"/></dct:spatial>
<dct:spatial>{"type":"Polygon","coordinates":[[[-1.26156091294416, 45.5731138630698],
[0.315055728326286, 45.5731138630698], [0.315055728326286, 44.1940166710363],
[-1.26156091294416, 44.1940166710363], [-1.26156091294416, 45.5731138630698] ]
]}</dct:spatial>
<dcat:themeTaxonomy><rdf:about="http://eurovoc.europa.eu"/>
<dcat:Dataset
rdf:about="http://catalogue.datalocale.fr/dataset/liste-equipements_sportifs-cg33">
<dct:title>Liste des équipements sportifs du Département de la Gironde</dct:title>
<dct:description>Ce jeu de données contient une liste d'équipement sportifs décrit par
leur nom, leur coordonnées postales et leur géolocalisation ainsi que par la liste des
activités sportives qui peuvent y être pratiquées</dct:description>
<adms:contactPoint>Cartelo, Denis</adms:contactPoint>
<dcat:Distribution>
<dct:identifiant
rdf:resource="https://data.some.org/catalog/datasets/1/distribution/1"/>
</dcat:Distribution>
<dct:keyword>tennis,gymnase, piscine</dct:keyword>
<dct:publisher>
<foaf:agent rdf:about="http://catalogue.datalocale.fr/group/dgaj-dsa">Direction des
sports et de la vie associative du Département de la Gironde</foaf:agent>
</dct:publisher>
<dcat:theme rdf:resource="http://eurovoc.europa.eu/100149"/>
<dct:identifiant rdf:resource="urn:uuid:64dcd93a-4f9d-42a5-816e-44be3f3be0a03">

```

```

< dct: conformsTo
rdf: about="http://www.insee.fr/fr/methodes/default.asp?page=sources/ope-adm-bpe.htm"/>
< dct: accrualPeriodicity>mensuel</dct: accrualPeriodicity>
< dcat: landingPage>http://www.gironde.fr/equipements/EquipementsSportifs.html<dcat: landingPage>
< dct: language>Fr</dct: language>
< dct: issued><2001-01-15</dct: issued>
< dct: spatial>Gironde, France</dct: spatial>
< dct: spatial>{"type": "Polygon", "coordinates": [ [ [-1.26156091294416, 45.5731138630698],
[0.315055728326286, 45.5731138630698], [0.315055728326286, 44.1940166710363],
[-1.26156091294416, 44.1940166710363], [-1.26156091294416, 45.5731138630698] ]
]}</dct: spatial>
< dct: temporal>2000-01-15 00:45:00,2010-01-15 00:06:00</dct: temporal>
< dct: modified>2012-01-15</dct: modified>
< adms: version>2013</adms: version>
< adms: versionNotes>Ajout de 2 colonnes permettant de préciser les coordonnées géographiques des équipements concernés.</adms: versionNotes>
< dcat: distribution>
< dcat: accessURL
rdf: resource="http://catalogue.datalocale.fr/dataset/liste-equipements_sportifs-cg33/resource/c23ce03c-2ee6-46ef-a4a7-3f23c589577d"/>
< dct: description>Cette ressource est un export au format csv encodé en UTF-8 et contenant des coordonnées géolocalisées en WGS 84</dct: description>
< dct: licence rdf: about="http://data.lacub.fr/pdf/ODbL_fr.pdf"/>
< dcat: byteSize>3MB</dcat: byteSize>
< dcat: downloadURL rdf: resource="
http://catalogue.datalocale.fr/storage/f/2013-05-23T120224/LISTE_EQUIPEMENTS_SPORTIFS_CG.csv"/>
< dct: title>export en csv</dct: title>
< dct: issued>2001-01-15</dct: issued>
< dct: rights>Les éléments contenu dans ce fichier sont librement ré-utilisables conformément aux conditions de la licence ODBL</dct: rights>
< dcat: mediaType>text/csv</dct: format>
< dct: status>base de données en cours d'enrichissement</dct: status>
</dcat: distribution>
</dcat: dataset>
< dcat: catalogueRecord>
< foaf: primaryTopic
rdf: resource="http://catalogue.datalocale.fr/dataset/bro_gestion-forestiere"/>
< dct: modified>2012-01-15</dct: modified>
< dct: issued>2001-01-15</dct: issued>
< adms: status>updated</adms: status>
< dct: description>mise à jour de la couverture géographique du jeu de données</dct: description>
< dct: title>mise à jour des métadonnées</dct: title>
</dcat: catalogueRecord>
</dcat: catalog>

```

## Annexe 2 : Metadata example in Turtle

```

:catalog
  a dcat:Catalog ;
  dct:title "Catalogue de données publiques du Département de la Gironde" ;
  rdfs:label "Catalogue de données publiques du Département de la Gironde" ;
  foaf:homepage <http://catalogue.datalocale.fr> ;
  dct:publisher :cg33 ;
  dct:language <http://id.loc.gov/vocabulary/iso639-1/fr> ;
  dcat:dataset :dataset-001 , :dataset-002 , :dataset-003 ;

:cg33
  a foaf:Organization ;
  rdfs:label "Département de la Gironde" .

:dataset-001
  a dcat:Dataset ;
  dct:title "Liste des équipements sportifs du Département de la Gironde" ;
  dcat:keyword "sport","danse" ,"tennis" ;
  dct:issued "2011-12-05"^^xsd:date ;
  dct:modified "2011-12-05"^^xsd:date ;
  dcat:contactPoint <http://catalogue.datalocale.fr/cg33/contact> ;
  dct:temporal <http://reference.data.gov.uk/id/quarter/2006-Q1> ;
  dct:spatial <http://www.geonames.org/6695072/:3015948> ;
  dct:publisher :dgaj-dsa ;
  dct:language <http://id.loc.gov/vocabulary/iso639-1/fr> ;
  dct:accrualPeriodicity <http://purl.org/linked-data/sdmx/2009/code#freq-W> ;
  dcat:distribution :dataset-001-csv ;

:catalog dcat:themeTaxonomy :eurovoc .

:eurovoc
  a skos:ConceptScheme ;
  skos:prefLabel "A set of domains to classify documents" ;
  .

:dataset-001 dcat:theme :sport .
:sport
  a skos:Concept ;
  skos:inScheme :eurovoc ;
  skos:prefLabel "Sport" ;

:catalog dcat:record :record-001 .

:record-001
  a dcat:CatalogRecord ;
  foaf:primaryTopic :dataset-001 ;

```

```

    dct:issued "2011-12-11"^^xsd:date ;

    :dataset-001
      a dcat:Dataset ;
      dcat:landingPage
<http://catalogue.datalocale.fr/dataset/liste-equipements_sportifs-cg33/resource/c23ce0
3c-2ee6-46ef-a4a7-3f23c589577d> ;
      dcat:distribution :dataset-001-csv ;
      .
    :dataset-003-csv
      a dcat:Distribution ;
      dcat:downloadURL
<http://catalogue.datalocale.fr/storage/f/2013-05-23T120224/LISTE_EQUIPEMENTS_SPORTIFS_
CG.csv> .
      dcat:mediaType "text/csv" ;

    :dataset-001-csv
      a dcat:Distribution ;
      dcat:downloadURL
<http://catalogue.datalocale.fr/storage/f/2013-05-23T120224/LISTE_EQUIPEMENTS_SPORTIFS_
CG.csv> ;
      dct:title "distribution de la ressource du jeu de données dataset-001" ;
      dcat:mediaType "text/csv" ;
      dcat:byteSize "5120"^^xsd:decimal ;

```

### Annexe 3 : Example of record showing DCAT to INSPIRE alignment

```

@prefix cnt: <http://www.w3.org/2011/content#> .
@prefix dc: <http://purl.org/dc/elements/1.1/> . @prefix dcat:
<http://www.w3.org/ns/dcat#> .
@prefix dct: <http://purl.org/dc/terms/> .
@prefix dcterms: <http://purl.org/dc/terms/> .
@prefix earl: <http://www.w3.org/ns/earl#> .
@prefix foaf: <http://xmlns.com/foaf/0.1/> .
@prefix locn: <http://w3.org/ns/locn#> .
@prefix ogc: <http://www.opengis.net/rdf#> .
@prefix prov: <http://www.w3.org/ns/prov#> .
@prefix rdf: <http://www.w3.org/1999/02/22-rdf-syntax-ns#> .
@prefix rdfs: <http://www.w3.org/2000/01/rdf-schema#> .
@prefix schema: <http://schema.org/> .
@prefix skos: <http://www.w3.org/2004/02/skos/core#> .
@prefix vcard: <http://www.w3.org/2006/vcard/ns#> .
@prefix wdrs: <http://www.w3.org/2007/05/powder-s#> .

```



```

@prefix wdsr: <http://www.w3.org/2007/05/powder-s#> .
@prefix xsd: <http://www.w3.org/2001/XMLSchema#> .
[ ] a dcat:Dataset ;
dct:conformsTo <http://inspire.ec.europa.eu/codelist/DegreeOfConformity/conformant> ;
dct:created "2010-03-01"^^xsd:date ;
dct:description "Pan-European Forest / Non Forest Map with target year 2006, Data
Source: Landsat ETM+ and Corine Land Cover 2006, Classes: forest, non-forest,
clouds/snow, no data; Method: automatic classification performed with an in-house
algorithm; spatial resolution: 25m. In addition, the forest map 2006 is extended to
FTYPE2006 to include forest types (broadleaf, coniferous forest) that are mapped using
MODIS composites."@en ;
dct:identifier
"http://efdac.jrc.ec.europa.eu//947e5a55-e548-11e1-9105-0017085a97ab"^^xsd:string ;
dct:issued "2010-10-05"^^xsd:date ;
dct:keyword "CHM"@en,
"RDSI"@en ;
dct:language <http://publications.europa.eu/resource/authority/language/ENG> ;
dct:modified "2011-09-01"^^xsd:date ;
dct:provenance [ a dct:ProvenanceStatement ;
rdfs:label "Forest Map 2006 is derived from the IMAGE2006 (SPOT/LISS scenes) and
CORINE2006 landcover dataset. In addition, MODIS composites are used for the Forest
type classification."@en ] ;
dct:rightsHolder [ a foaf:Organization ;
foaf:mbox <mailto:efdac@jrc.ec.europa.eu> ;
foaf:name "European Union"@en ] ;
dct:spatial [ a dct:Location ;
locn:geometry "<gml:Envelope
srsName=\"http://www.opengis.net/def/EPSSG/0/4326\"><gml:lowerCorner>-10.58
34.56</gml:lowerCorner><gml:upperCorner>34.59
70.09</gml:upperCorner></gml:Envelope>"^^ogc:GMLLiteral ] ;
dct:subject
<http://inspire.ec.europa.eu/codelist/TopicCategory/geoscientificInformation> ;
dct:temporal [ a dct:PeriodOfTime ;
schema:endDate "2006-12-31"^^xsd:date ;
schema:startDate "2006-01-01"^^xsd:date ] ;
dct:title "Forest / Non-Forest Map 2006"@en ;
dct:type <http://inspire.ec.europa.eu/codelist/ResourceType/series> ;
wdsr:describedby [ a earl:Assertion ;
earl:result [ a earl:TestResult ;
earl:outcome <http://inspire.ec.europa.eu/codelist/DegreeOfConformity/conformant> ] ;
earl:test [ dct:issued "2010-12-08"^^xsd:date ;
dct:title "COMMISSION REGULATION (EU) No 1089/2010 of 23 November 2010 implementing
Directive 2007/2/EC of the European Parliament and of the Council as regards
interoperability of spatial data sets and services"@en ] ] ;
dcat:distribution [ a dcat:Distribution ;
dct:accessRights [ a dct:RightsStatement ;
rdfs:label "no limitation"@en ] ;
dct:rights [ a dct:RightsStatement ;

```

```
rdfs:label "Reuse is authorised according to the European Commission legal notice at
http://ec.europa.eu/geninfo/legal_notices_en.htm"@en ] ;
cnt:characterEncoding "UTF-8"^^xsd:string ;
dcat:mediaType <http://publications.europa.eu/resource/authority/file-type/TIFF> ] ;
dcat:landingPage <http://forest.jrc.ec.europa.eu/forestmap-download>,
<http://geohub.jrc.ec.europa.eu/forest/efdac/efdac_core?request=GetCapabilities&service
=wms> ;
dcat:theme [ a skos:Concept ;
skos:inScheme [ a skos:ConceptScheme ;
rdfs:label "GEMET - Concepts, version 2.4"@en ;
dct:issued "2010-01-13"^^xsd:date ] ;
skos:prefLabel "coniferous forest"@en ],
[ a skos:Concept ;
skos:inScheme [ a skos:ConceptScheme ;
rdfs:label "GEMET - Concepts, version 2.4"@en ;
dct:issued "2010-01-13"^^xsd:date ] ;
skos:prefLabel "scientific research"@en ],
[ a skos:Concept ;
skos:inScheme [ a skos:ConceptScheme ;
rdfs:label "GEMET - Concepts, version 2.4"@en ;
dct:issued "2010-01-13"^^xsd:date ] ;
skos:prefLabel "forest resource"@en ],
[ a skos:Concept ;
skos:inScheme [ a skos:ConceptScheme ;
rdfs:label "GEMET - Concepts, version 2.4"@en ;
dct:issued "2010-01-13"^^xsd:date ] ;
skos:prefLabel "forest"@en ],
[ a skos:Concept ;
skos:inScheme [ a skos:ConceptScheme ;
rdfs:label "EFDAC"@en ;
dct:created "2010-02-17"^^xsd:date ] ;
skos:prefLabel "EFDAC"@en ],
[ a skos:Concept ;
skos:inScheme [ a skos:ConceptScheme ;
rdfs:label "GEMET - Concepts, version 2.4"@en ;
dct:issued "2010-01-13"^^xsd:date ] ;
skos:prefLabel "Europe"@en ],
[ a skos:Concept ;
skos:inScheme [ a skos:ConceptScheme ;
rdfs:label "ReRES-INSPIRE"@en ;
dct:created "2010-02-17"^^xsd:date ] ;
skos:prefLabel "ReRES-INSPIRE v0.0.1"@en ],
<http://inspire.ec.europa.eu/theme/lc> ;
prov:qualifiedAttribution [ a prov:Attribution ;
dct:type <http://inspire.ec.europa.eu/codelist/ResponsiblePartyRole/author> ;
prov:agent [ a vcard:Kind ;
vcard:hasEmail <mailto:efdac@jrc.ec.europa.eu> ;
vcard:organization-name " European Commission, Joint Research Centre "@en ] ],
```

```
[ a prov:Attribution ;
dct:type <http://inspire.ec.europa.eu/codelist/ResponsiblePartyRole/owner> ;
prov:agent [ a vcard:Kind ;
vcard:hasEmail <mailto:efdac@jrc.ec.europa.eu> ;
vcard:organization-name "European Union"@en ] ],
[ a prov:Attribution ;
dct:type <http://inspire.ec.europa.eu/codelist/ResponsiblePartyRole/resourceProvider> ;
prov:agent [ a vcard:Kind ;
vcard:hasEmail <mailto:efdac@jrc.ec.europa.eu> ;
vcard:organization-name "European Commission, Joint Research Centre"@en ] ] ;
foaf:isPrimaryTopicOf [ dct:issued "2012-08-13"^^xsd:date ;
dct:language <http://publications.europa.eu/resource/authority/language/ENG> ;
dcat:contactPoint [ a vcard:Kind ;
vcard:hasEmail <mailto:efdac@jrc.ec.europa.eu> ;
vcard:organization-name "European Commission, Joint Research Centre"@en ] ;
prov:qualifiedAttribution [ a prov:Attribution ;
dct:type <http://inspire.ec.europa.eu/codelist/ResponsiblePartyRole/pointOfContact> ;
prov:agent [ a vcard:Kind ;
vcard:hasEmail <mailto:efdac@jrc.ec.europa.eu> ;
vcard:organization-name "European Commission, Joint Research Centre"@en ] ] ] .
```

## Annexe 4 : Alignment between GEMET and Eurovoc

rdf :

<https://open-data.europa.eu/en/data/dataset/eurovoc/resource/deb29281-f6ba-43ad-86b3-7158c2bfd002>

csv : [https://ies-svn.jrc.ec.europa.eu/attachments/download/462/align\\_EuroVoc\\_Inspire.csv](https://ies-svn.jrc.ec.europa.eu/attachments/download/462/align_EuroVoc_Inspire.csv)

## References :

W3C DCAT standard : <https://dvcs.w3.org/hg/gld/raw-file/default/dcat/index.html>

DCAT-AP . EU ISA Programme, 13 May 2013 : <https://joinup.ec.europa.eu/node/66194>

Final 1.1 release :

[https://joinup.ec.europa.eu/asset/dcat\\_application\\_profile/asset\\_release/dcat-application-profile-data-portals-europe-final](https://joinup.ec.europa.eu/asset/dcat_application_profile/asset_release/dcat-application-profile-data-portals-europe-final)

W3C recipes : [http://www.w3.org/2011/gld/wiki/Data\\_Catalog\\_Vocabulary/Recipes](http://www.w3.org/2011/gld/wiki/Data_Catalog_Vocabulary/Recipes)

Representing content in RDF : <http://www.w3.org/TR/2011/WD-Content-in-RDF10-20110510/>

Dublin Core terms : <http://dublincore.org/documents/dcmi-terms>

INSPIRE DCAT profile :

[https://ies-svn.jrc.ec.europa.eu/projects/metadadata/wiki/INSPIRE\\_profile\\_of\\_DCAT-AP\\_-\\_Reference](https://ies-svn.jrc.ec.europa.eu/projects/metadadata/wiki/INSPIRE_profile_of_DCAT-AP_-_Reference)

## Implementations :

CKAN : <https://github.com/ckan/ckanext-dcat>

<https://github.com/ckan/ckanext-dcat/blob/master/examples/dataset.rdf>

Implementation recommendation : <https://project-open-data.cio.gov/metadata-resources/>

Catalogue generator : <https://project-open-data.cio.gov/catalog-generator/>

RDFForms : <http://rdforms.org/#!index.md>

vitro-project : <https://github.com/vivo-project/Vitro>

Karma : <http://www.isi.edu/integration/karma/>

Datalift : <http://datalift.org/en>