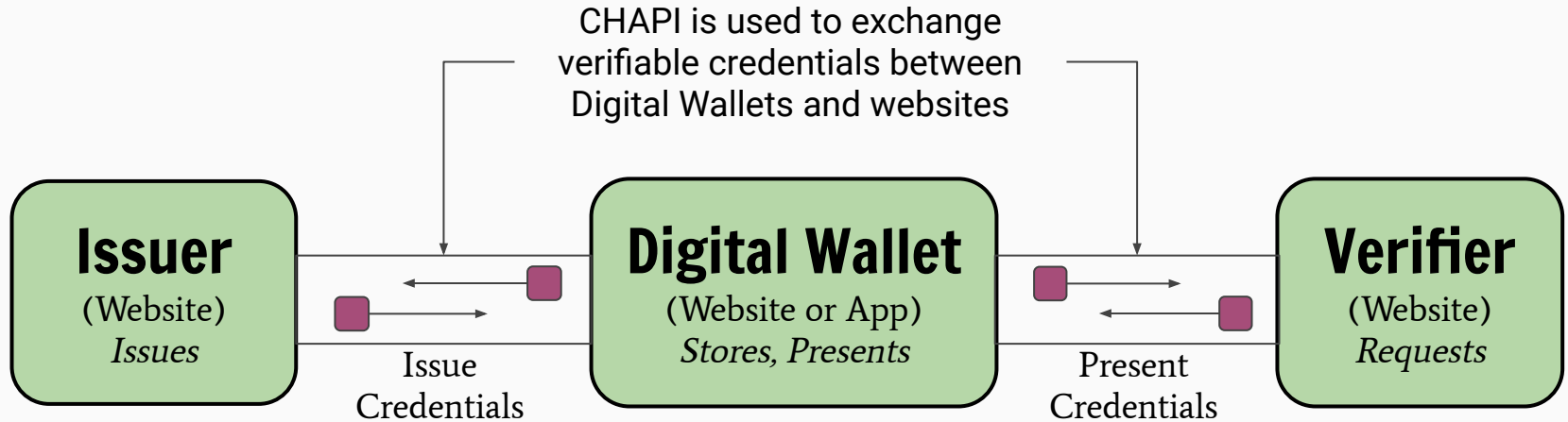


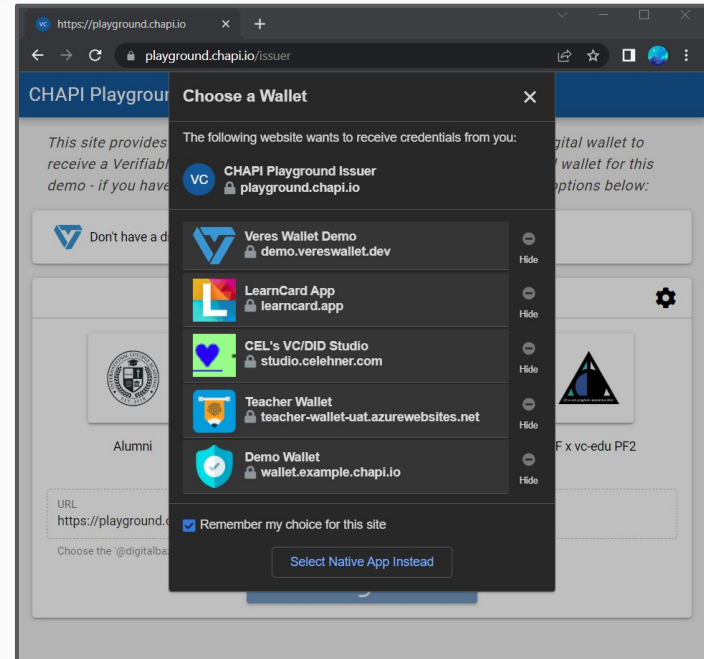
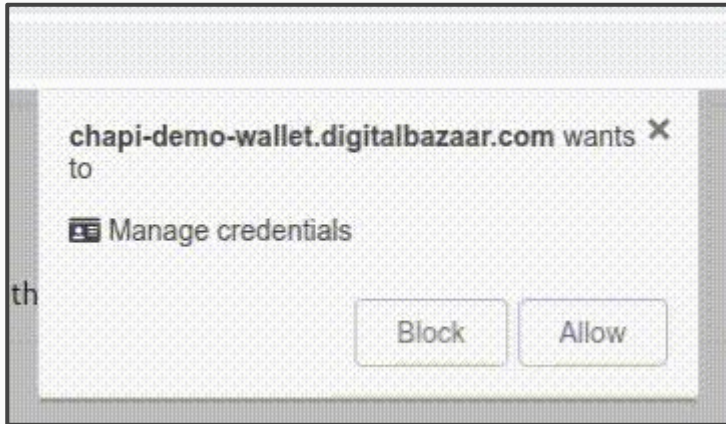


2023 CHAPI - VC EDU  
**Credential Handler API**

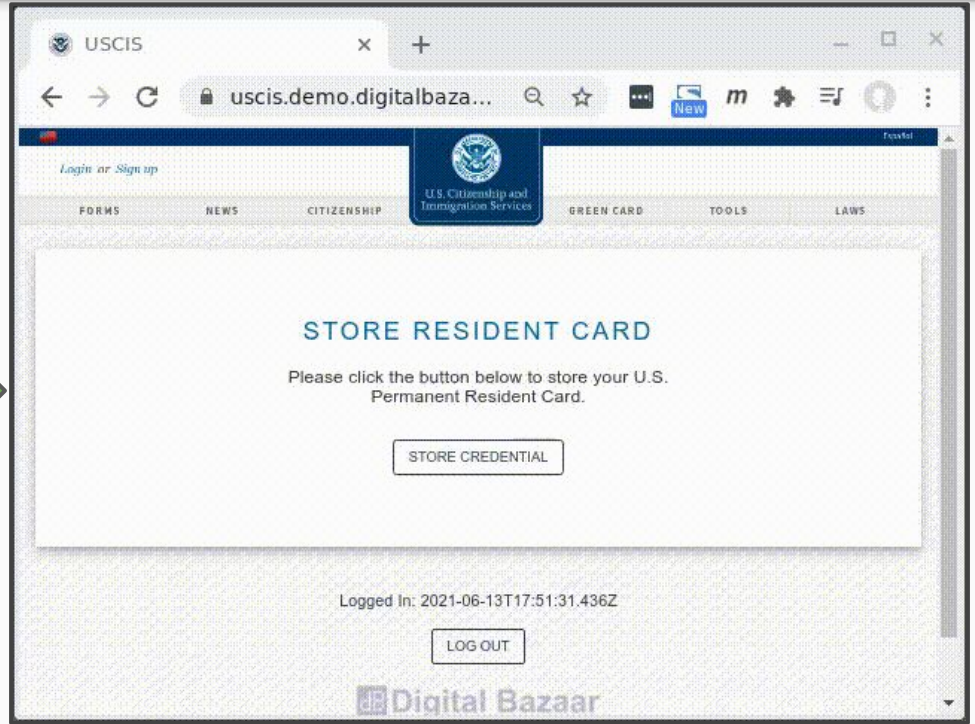
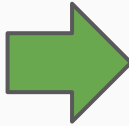
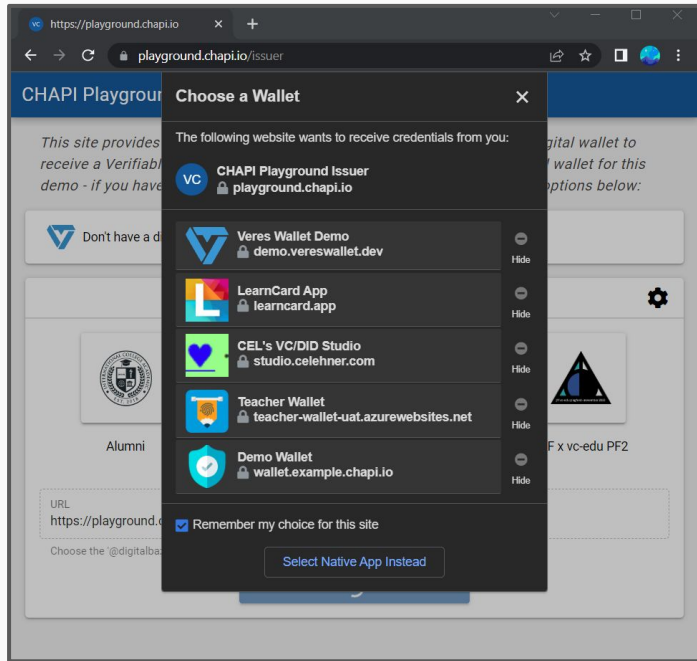
# CHAPI in One Picture



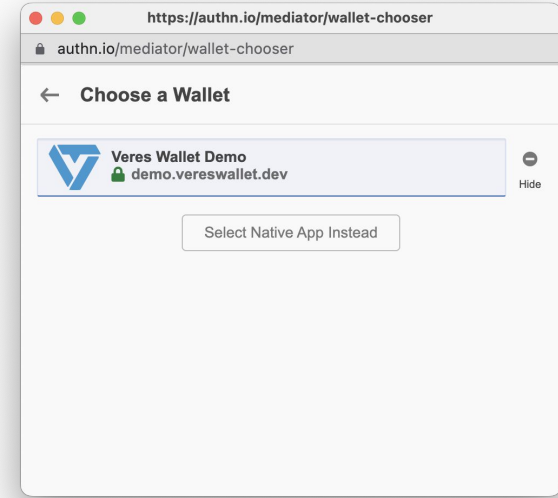
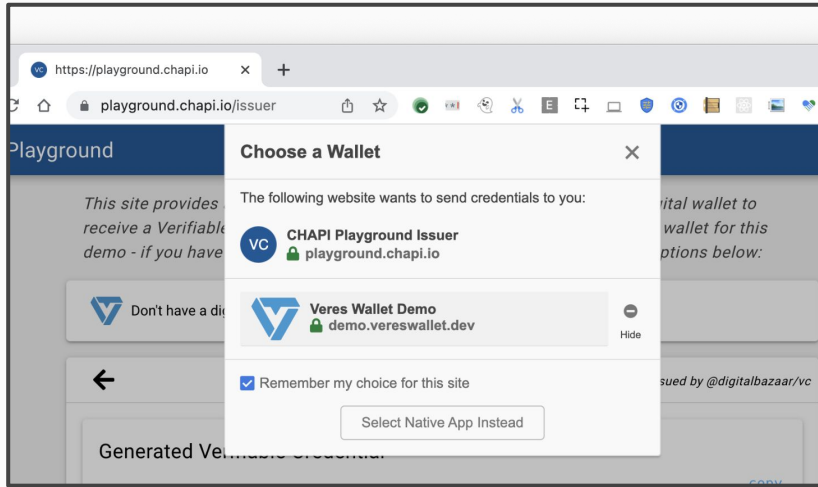
# Digital Wallet Registration



# Digital Wallet Selection



# Degrades gracefully when 3rd-party cookies are unavailable



# Interoperability Overview

## CHAPI and VC-API

**81** Combinations  
Demonstrated

**17 different Issuers**

14 PlugFest participants

3 from the broader VC-API community

**8 different wallets**

5 web wallets

3 native mobile apps



participate.

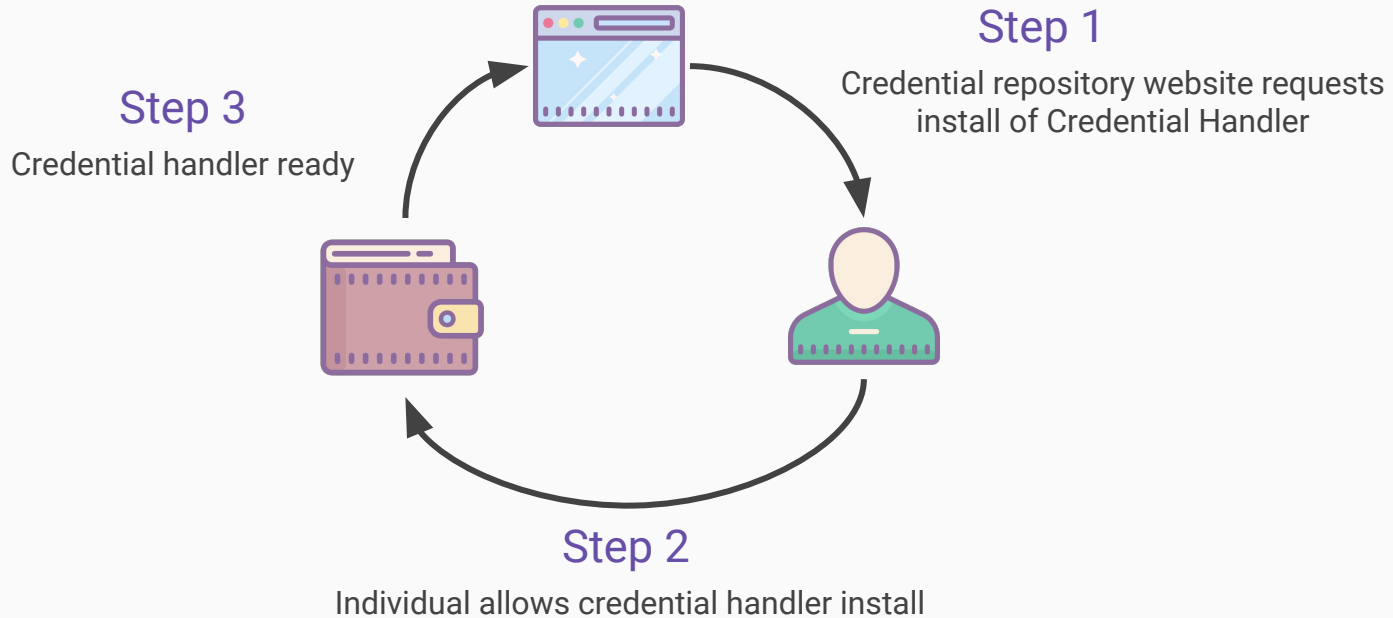


Mavennet

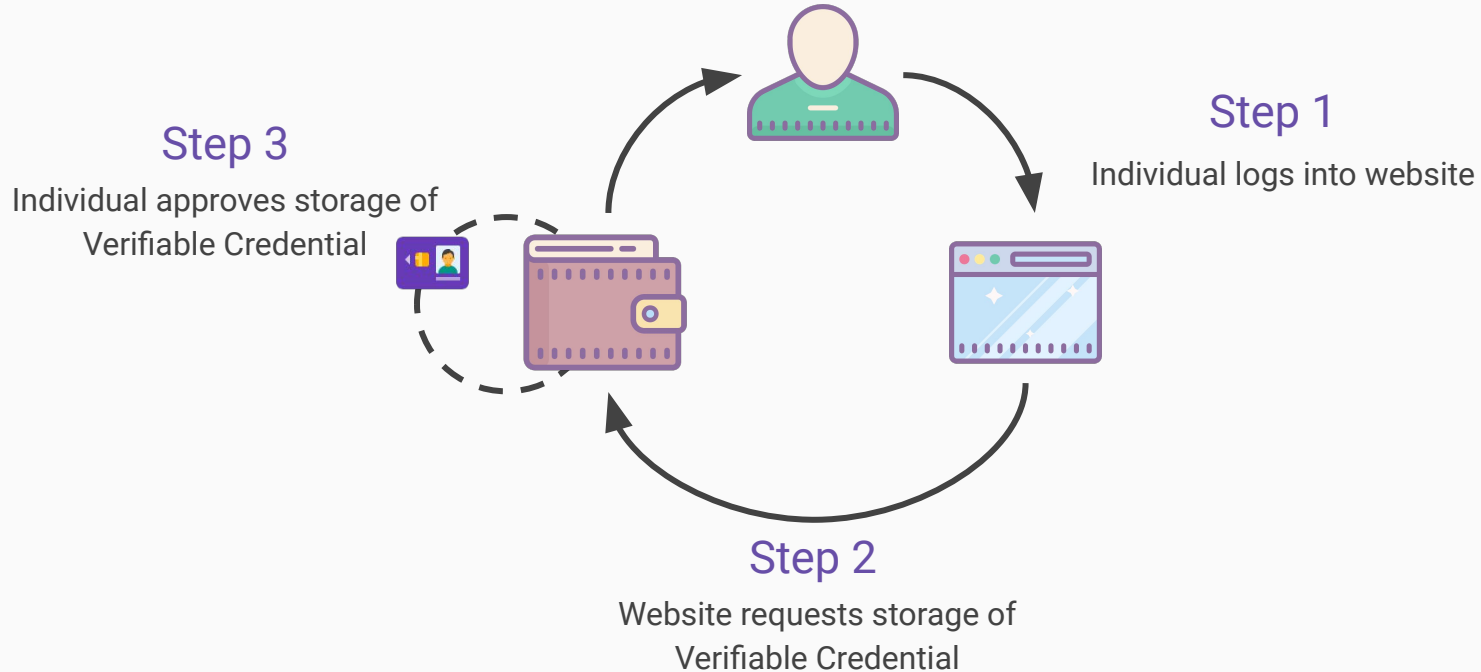




# Credential Handler Registration

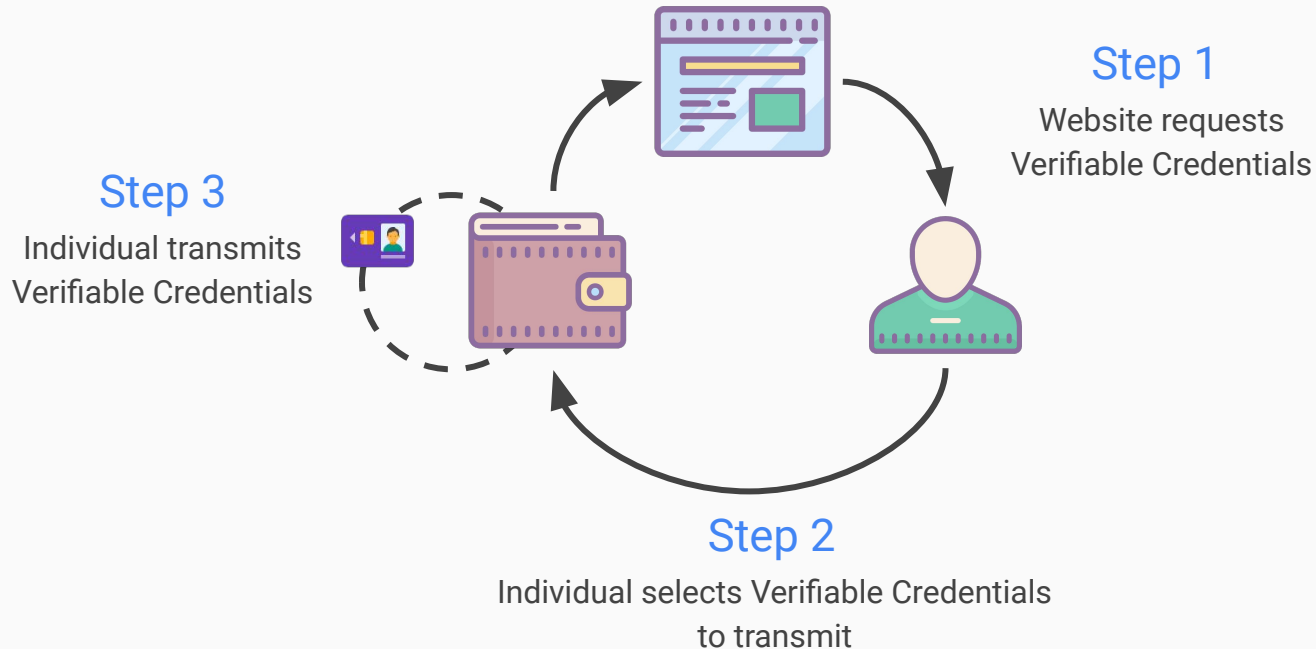


# Verifiable Credential Storage





# Verifiable Presentation Request



Demo

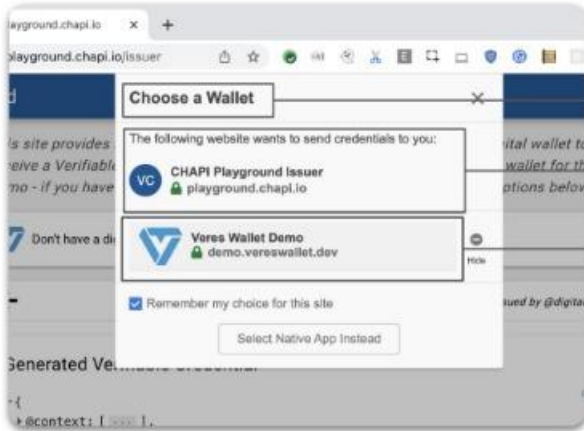
# CHAPI Timeline

- 2014 - [Identity Credentials](#) protocol proposed
- 2017 - [Web Payments Handler](#) written by Dave Longley
- 2017 - [CHAPI Specification](#) created by Dave Longley
- 2017 - CHAPI [adopted](#) as W3C CCG Work Item
- 2020 - DHS SVIP Interop (6 companies interop)
- 2022 - JFF Interop (17 companies interop)

# CHAPI Roadmap

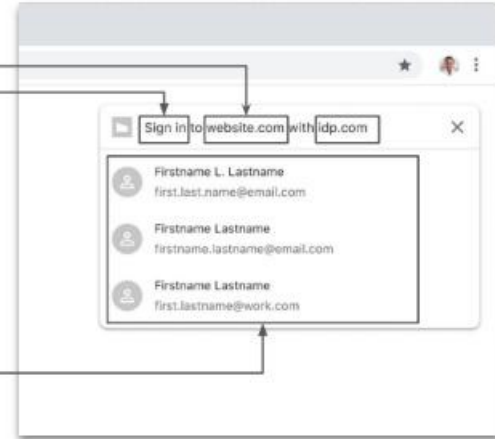
- 2023
  - In production with dedicated datacenter teams
  - Better integration for native apps
  - Some variation of OID4\* support
  - Native browser experiments w/ FedCM/Google
- 2024 - Some use of native FedCM browser code
- 2025 and beyond - continued upgrades and improvements

# CHAPI



- Wallet Selector
- Multiple Wallets
- Wallet language
- Modal
- Wallet Registration
- Connects with Native Apps

# FedCM



- IdP Account Selector
- IdP Accounts from Single IdP
- Login language
- Non-modal
- IdP Selected by RPs
- Only cloud providers

# CHAPI

- Wallet Selector
- Multiple Wallets
- Wallet language
- Modal
- Wallet Registration
- Connects with Native Apps

# FedCM

- Wallet Account\* Selector
- Wallet Accounts\* from Multiple Wallets
- Wallet language
- Modal
- Wallet Registration
- Only cloud providers (not covered, but easy)

I think there are going to be differences, but the bigger structural parts I think are similar enough.

\* I think you may call these "profiles" or "sessions"?

# Related Specifications and Code

Demo site: <https://playground.chapi.io/issuer>

Developer Documentation: <https://chapi.io/>

CHAPI Polyfill: <https://github.com/credential-handler/credential-handler-polyfill>

CHAPI Specification: <https://w3c-ccg.github.io/credential-handler-api/>



# Appendix