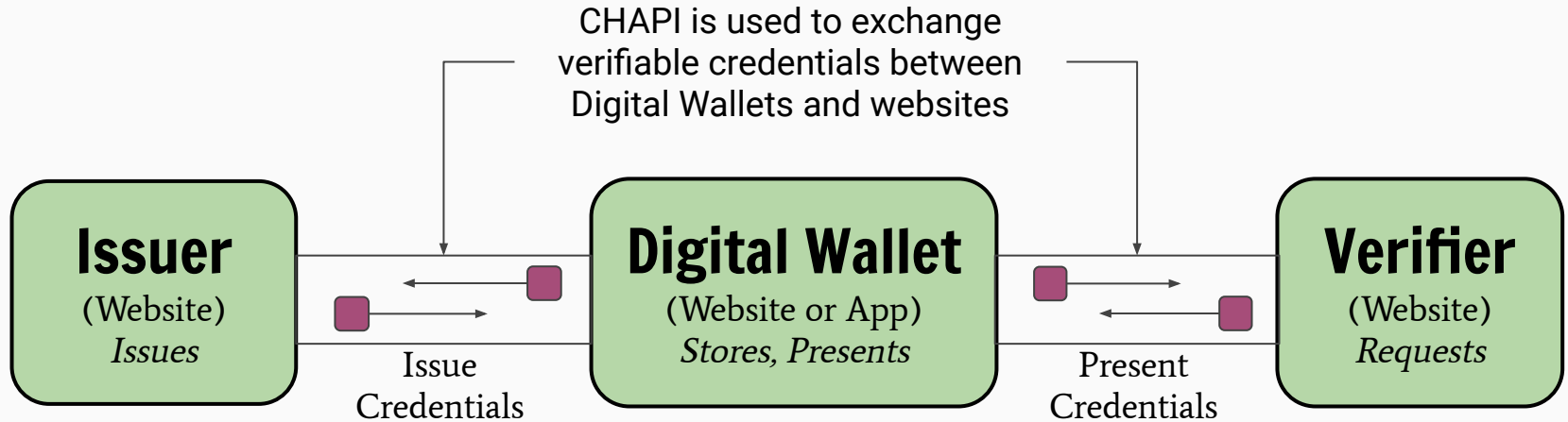




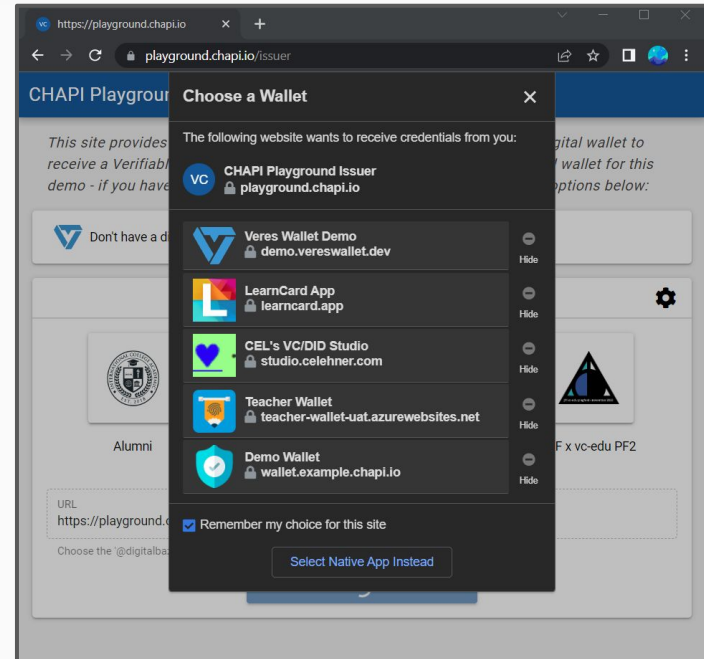
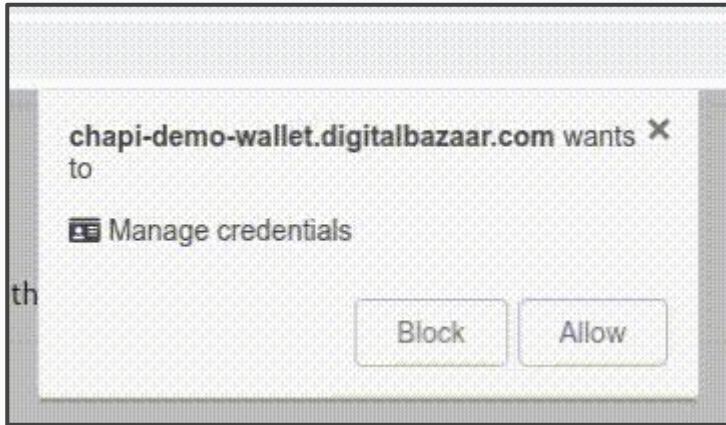
2022 FedCM CG + CHAPI Credential Handler API

CHAPI in One Picture

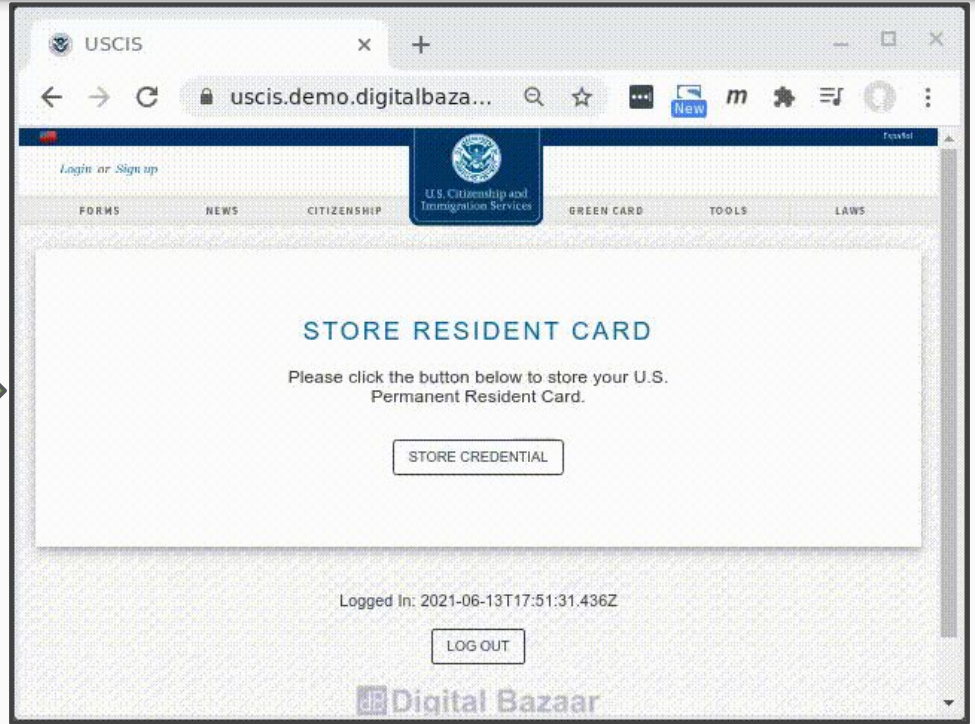
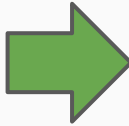
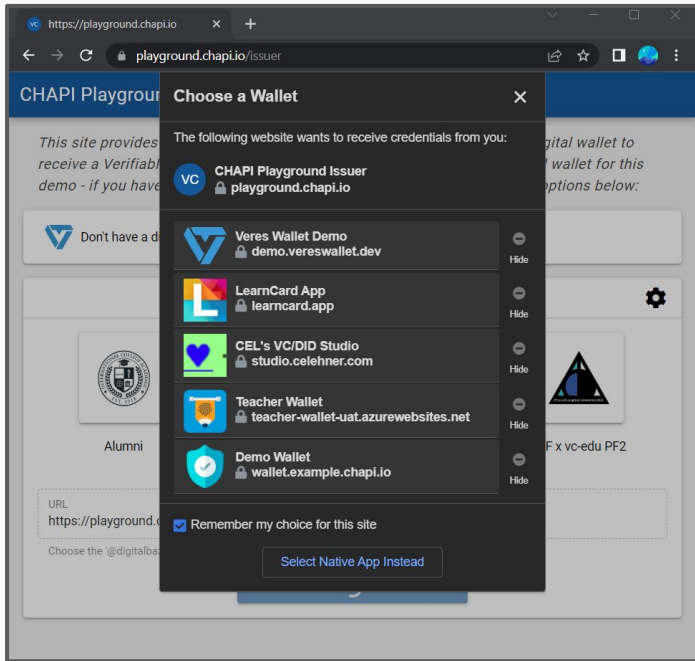


Analogue: FedCM APIs are used to exchange identity claims between IdPs and websites.

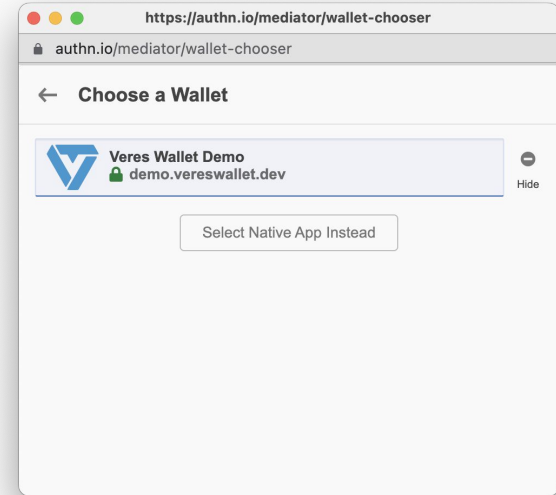
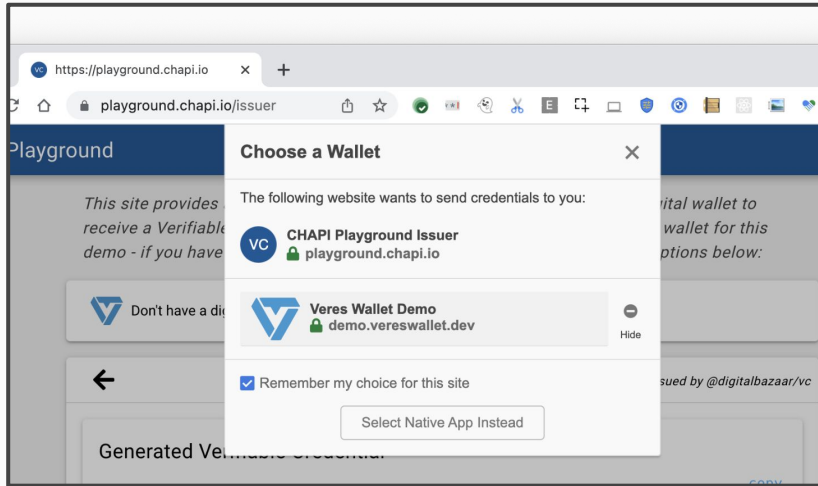
Digital Wallet Registration



Digital Wallet Selection



Degrades when 3rd-party cookies unavailable



Interoperability Overview

CHAPI and VC-API

81 Combinations
Demonstrated

17 different Issuers

14 PlugFest participants

3 from the broader VC-API community

8 different wallets

5 web wallets

3 native mobile apps



participate.



Mavennet



Goals and Non-Goals

- Goals
 - Explore commonalities between FedCM and CHAPI UX
 - Explore benefits of FedCM APIs that replace 3rd party cookies
 - CHAPI uses 3rd party cookies, but downgrades to a 1st party window if needed
 - Replace parts of CHAPI polyfill with FedCM APIs (if it leads to a better UX)
- Non-Goals
 - "Standardize" Verifiable Credentials and Decentralized Identifiers APIs
 - Solve generalized sharing of data between Websites/Apps (e.g., Web Share)

Discussion

FedCM Issue #374

TL;DR; Wallet selection in CHAPI is built with iframes and third party cookies. This is an exploration if FedCM can help preserve it.

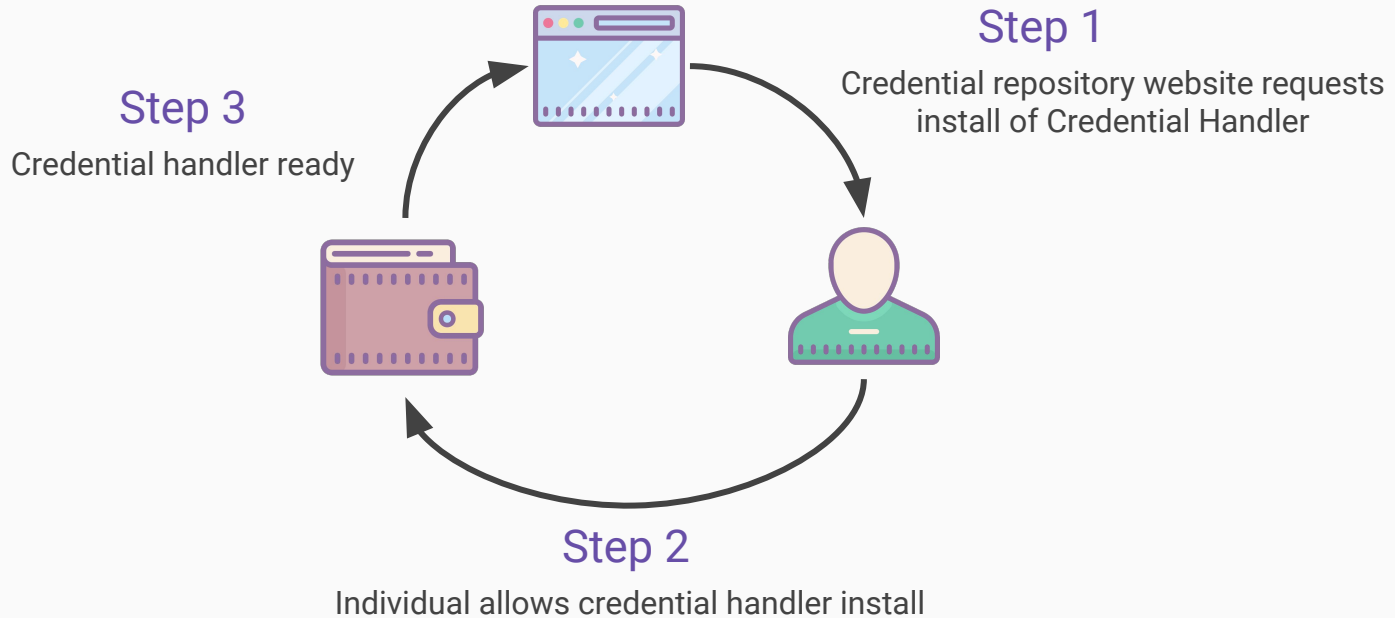
<https://github.com/fedidcg/FedCM/issues/374>

Appendix

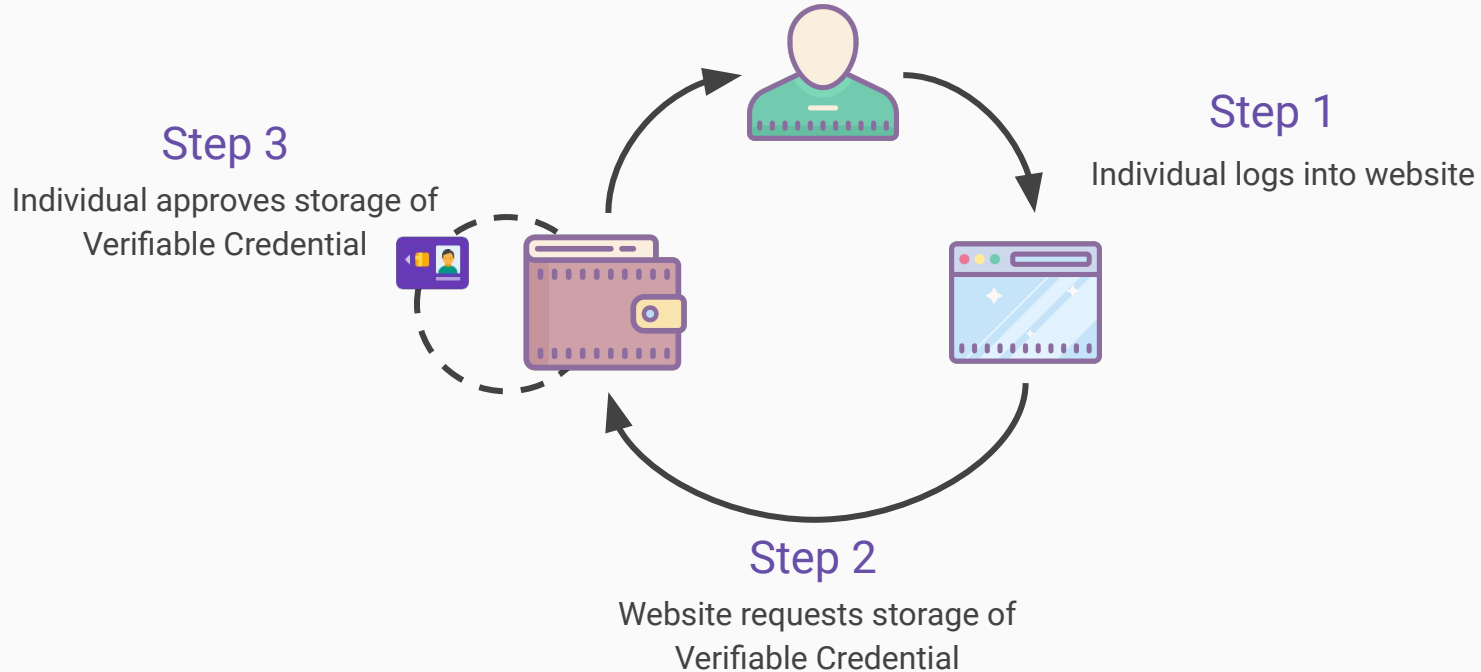


CHAPI Details

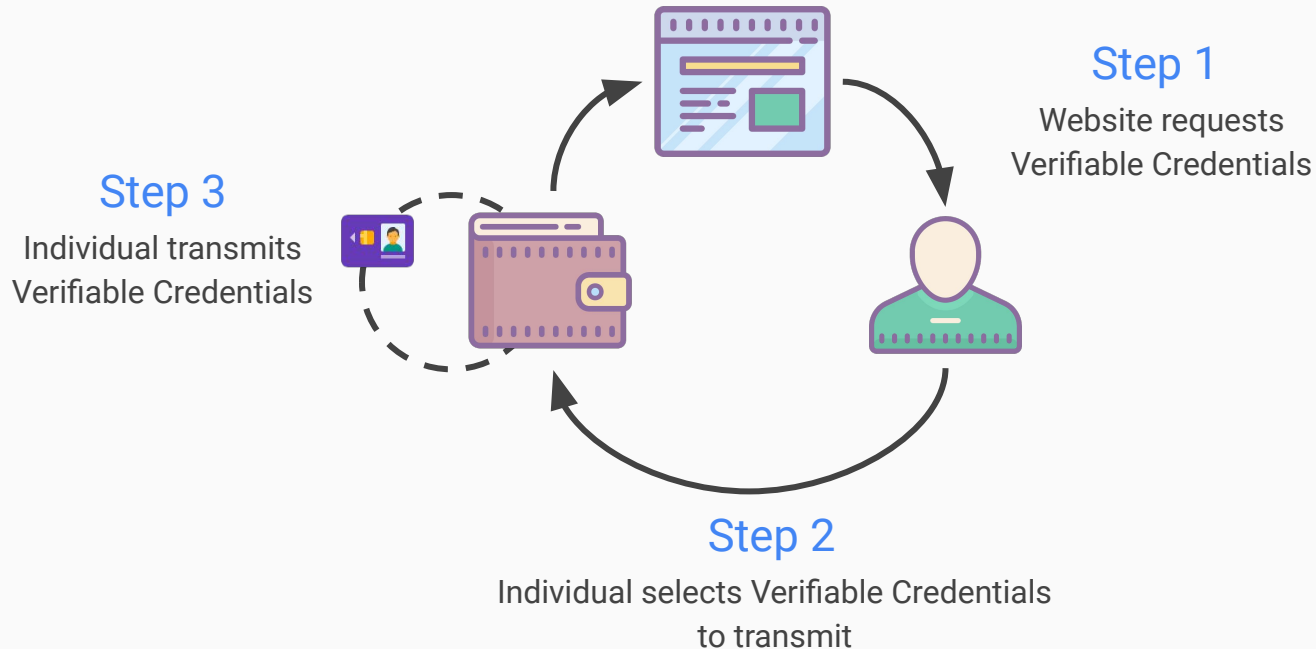
Credential Handler Registration



Verifiable Credential Storage



Verifiable Presentation Request



CHAPI Timeline

- 2014 - [Identity Credentials](#) protocol proposed
- 2017 - [Web Payments Handler](#) written by Dave Longley
- 2017 - [CHAPI Specification](#) created by Dave Longley
- 2017 - CHAPI [adopted](#) as W3C CCG Work Item
- 2020 - DHS SVIP Interop (6 companies interop)
- 2022 - JFF Interop (17 companies interop)

Related Specifications and Code

Demo site: <https://playground.chapi.io/issuer>

Developer Documentation: <https://chapi.io/>

CHAPI Polyfill: <https://github.com/credential-handler/credential-handler-polyfill>

CHAPI Specification: <https://w3c-ccg.github.io/credential-handler-api/>